



Florida Department of
TRANSPORTATION

First Coast Expressway

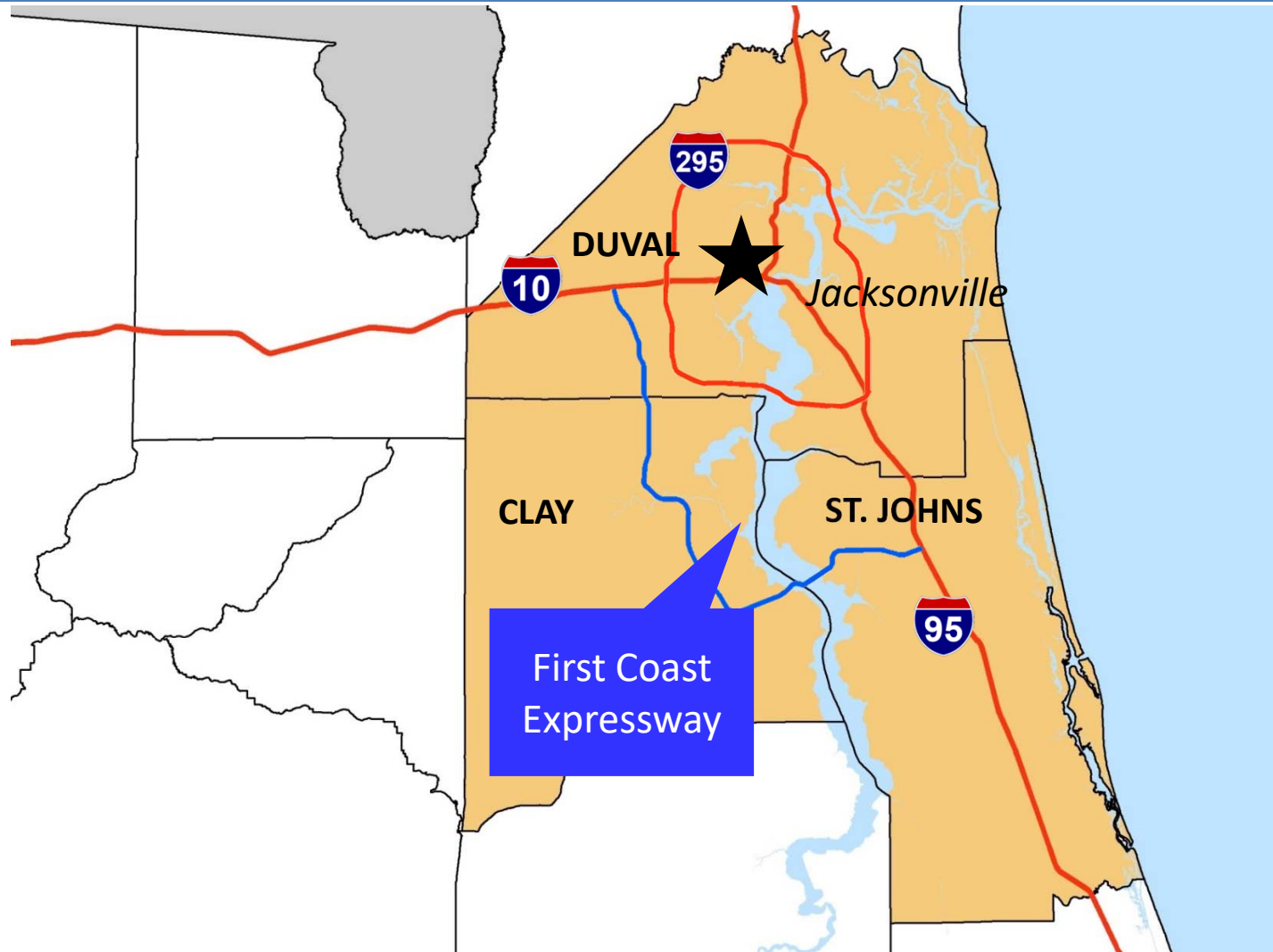


What is the First Coast Expressway (FCE)?

- Multi-lane, limited access toll expressway
- Connects I-10 in Duval County to I-95 in St. Johns County



How does FCE connect the region?



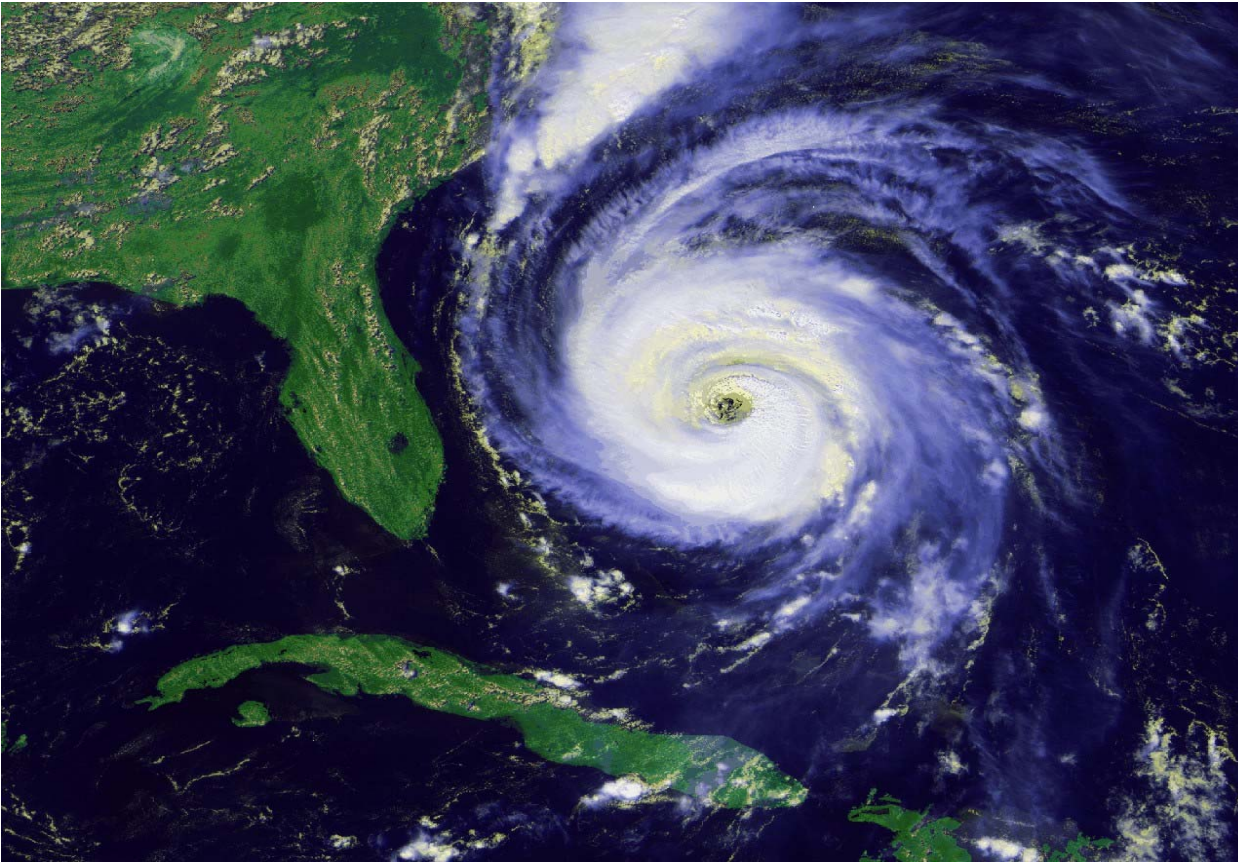
What are the benefits of FCE?

- Significantly reduces congestion
 - 280,000 vehicle hours saved per day
 - \$ 5.4 billion in savings per year



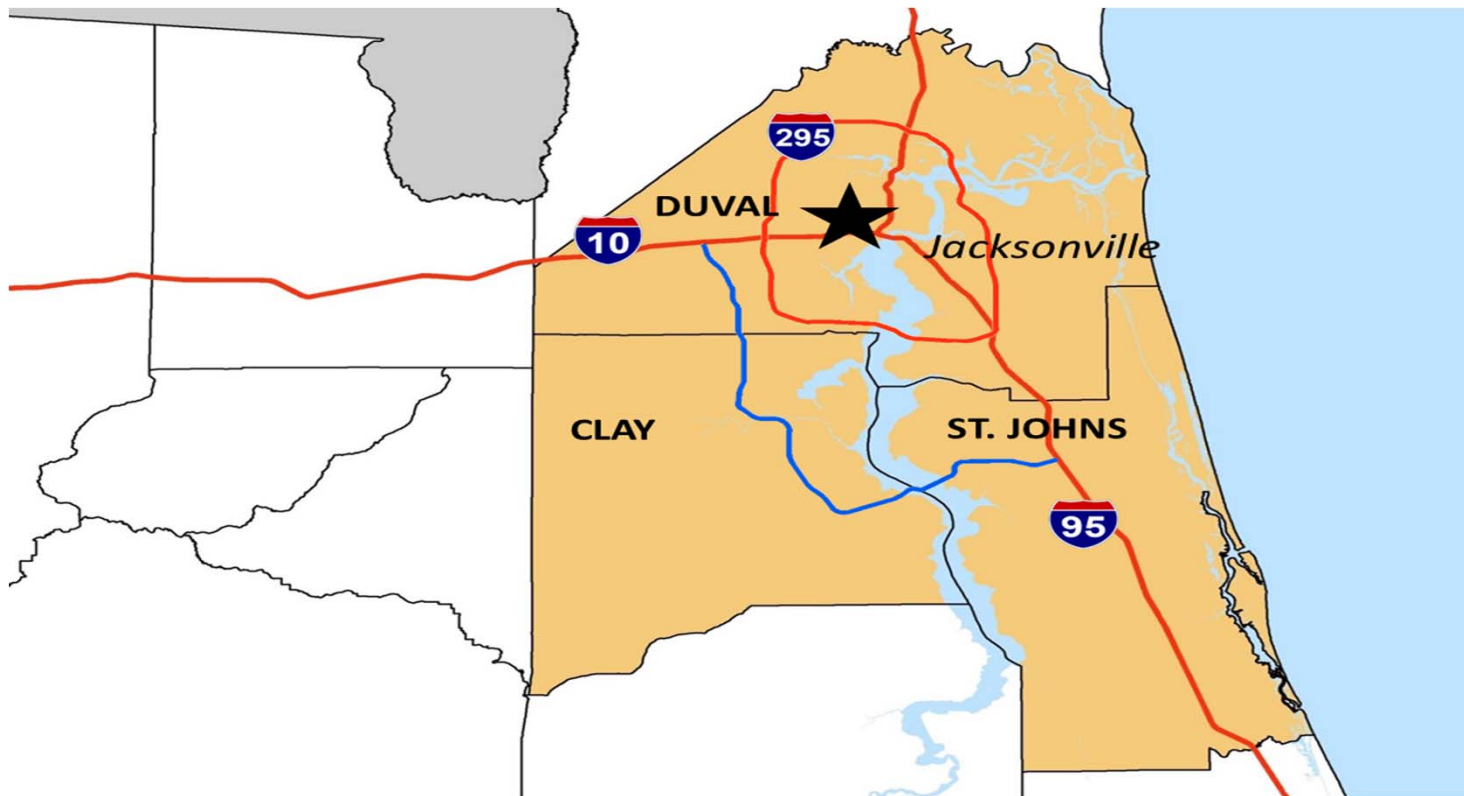
What are the benefits of FCE?

- Provides regional emergency evacuation



What are the benefits of FCE?

- Promote and support employment and economic development



What are the benefits of FCE?

- Enhanced shipping commerce

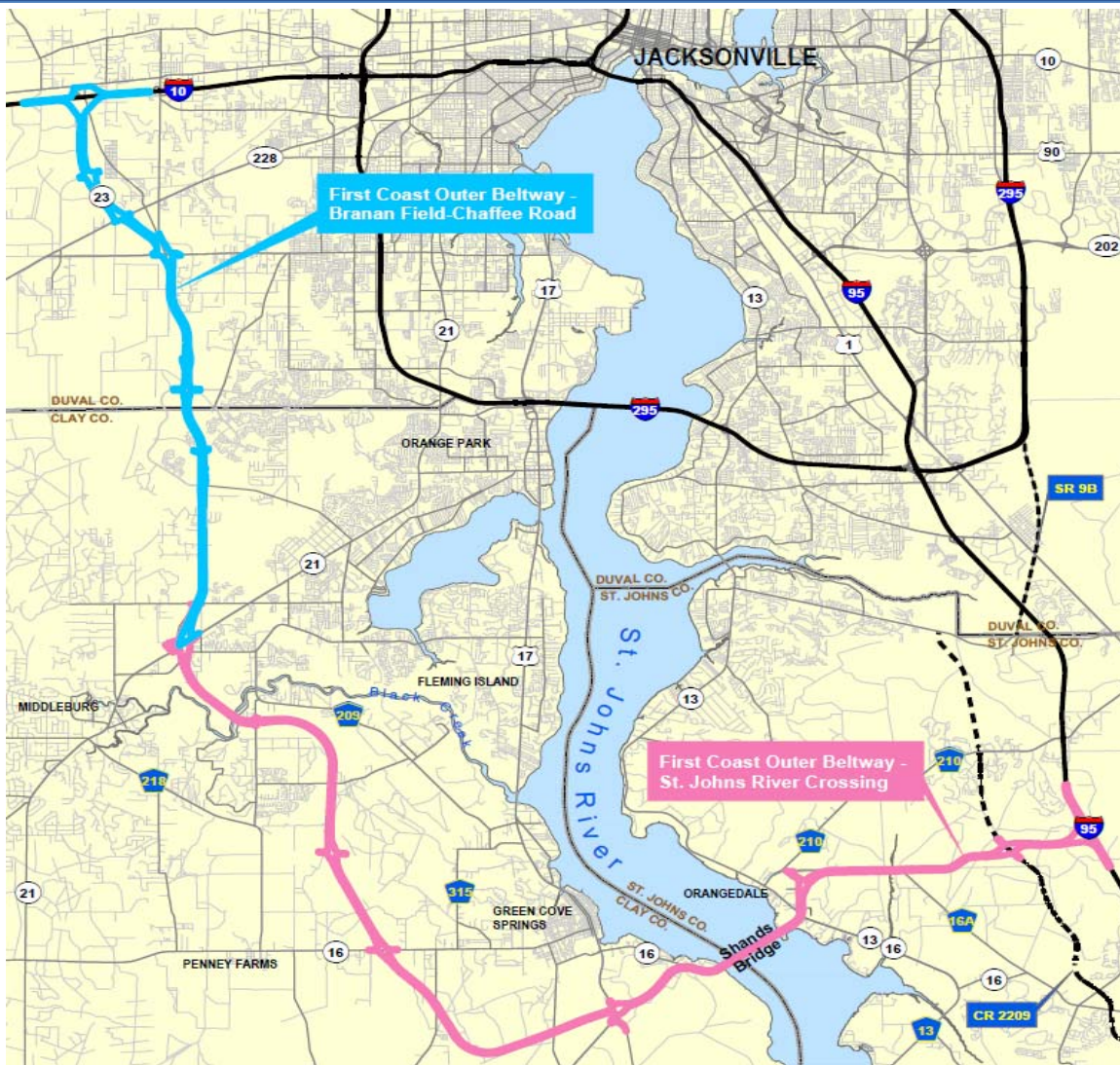


Project Overview

- First Coast Expressway consists of:
 - Branan-Field Chaffee project
 - St. Johns River Crossing project
- 46.5 miles in length
- Total Cost approximately \$1.9 billion



Project Overview



First Coast Expressway



Where are we now, Branan Field-Chaffee?

The 15 mile northern segment is under construction as a limited access toll facility



Where are we now, I-10 at SR 23 and US 90?

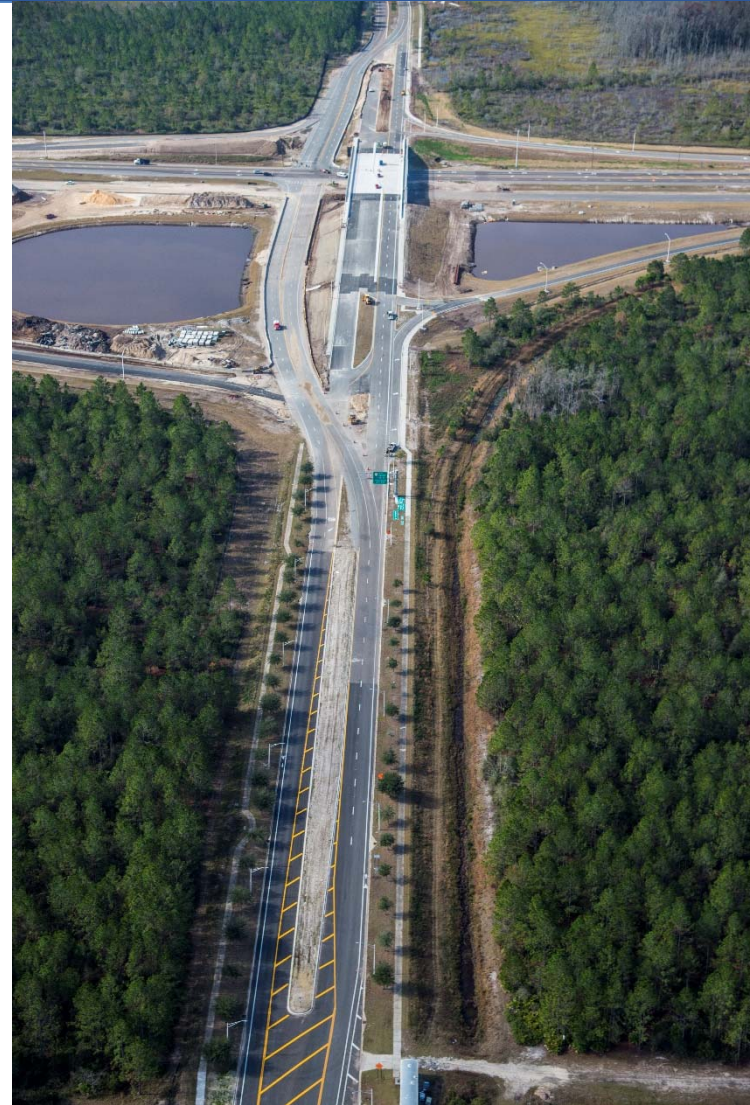


First Coast Expressway



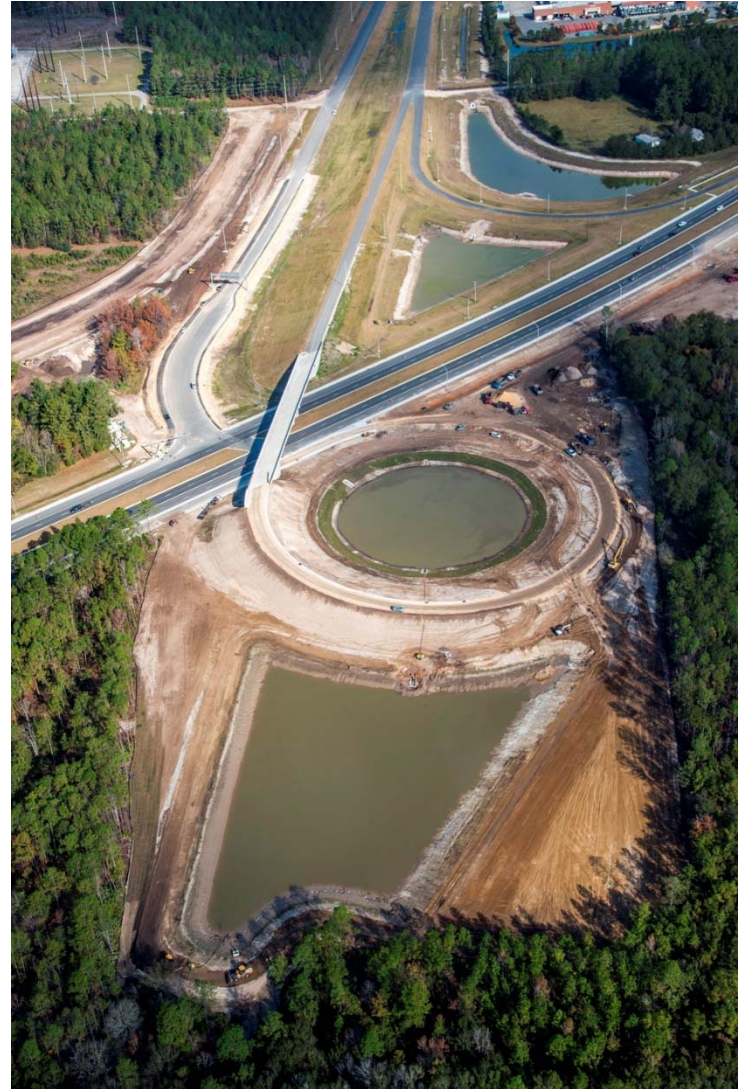
Where are we now?

**SR 23 at
New World Avenue**

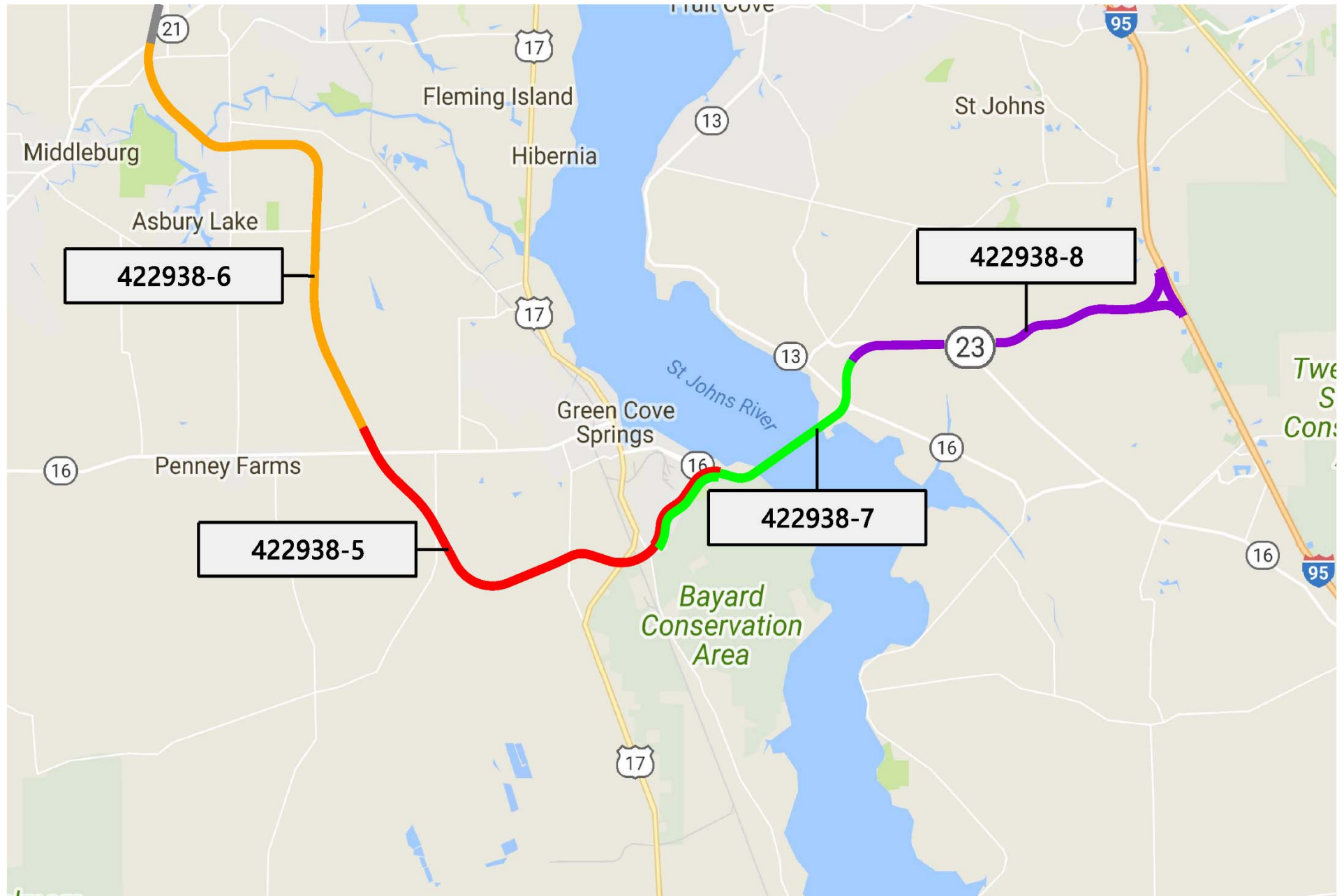


Where are we now?

**SR 23 at
SR 21/Blanding Blvd.**



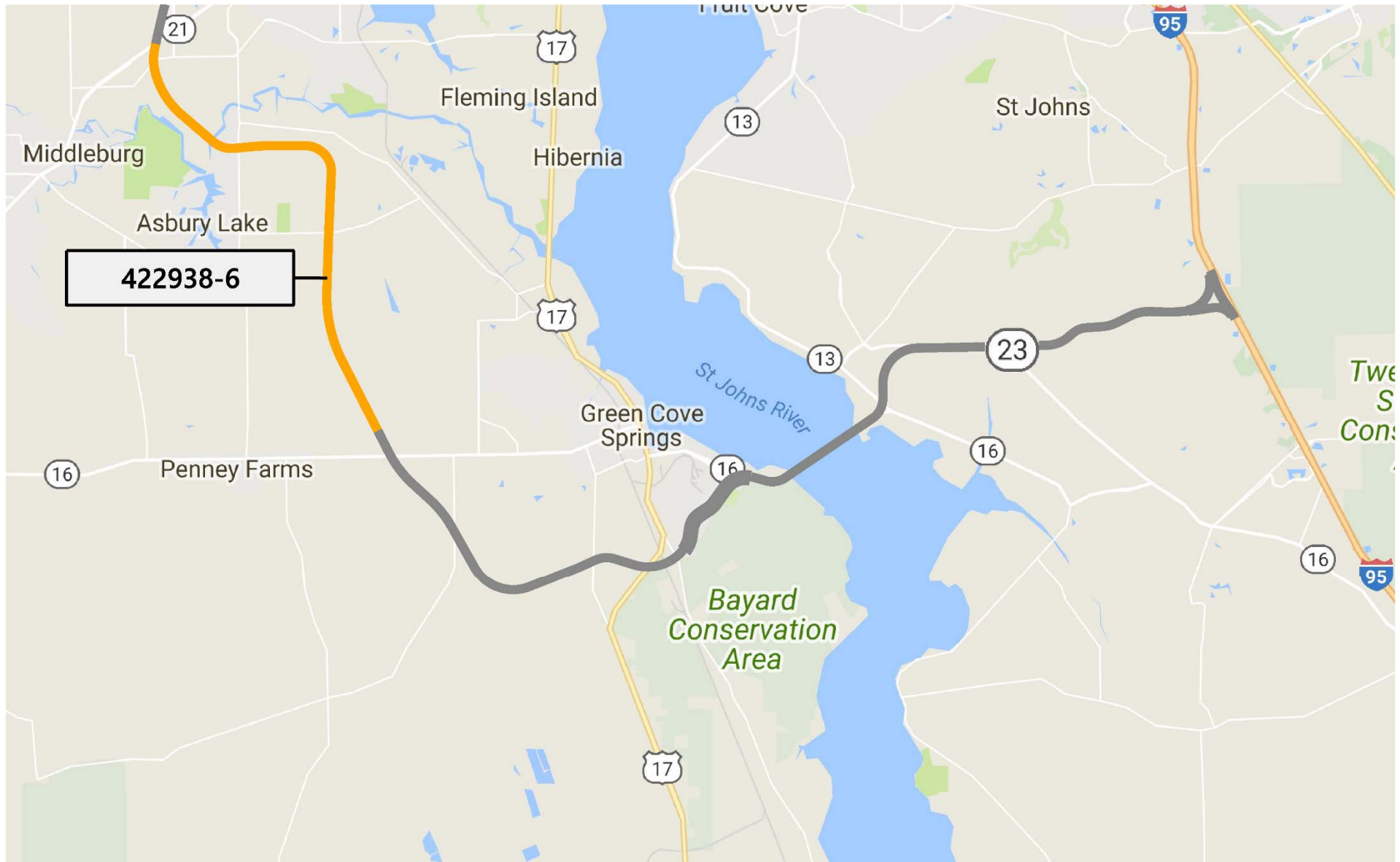
What's left to construct?



What's left to construct? St. Johns River Crossing

- 31.5 mile segment on new alignment
- 4-lane limited access toll expressway from I-95 in St. Johns County to SR 21 in Clay County
- Major bridge crossing over the St. Johns River
- Record of Decision approved April 2014
- WMD Permit and USACE permit anticipated February 2018
- USCG permit not submitted

What's left to construct? 422938-6-52-01



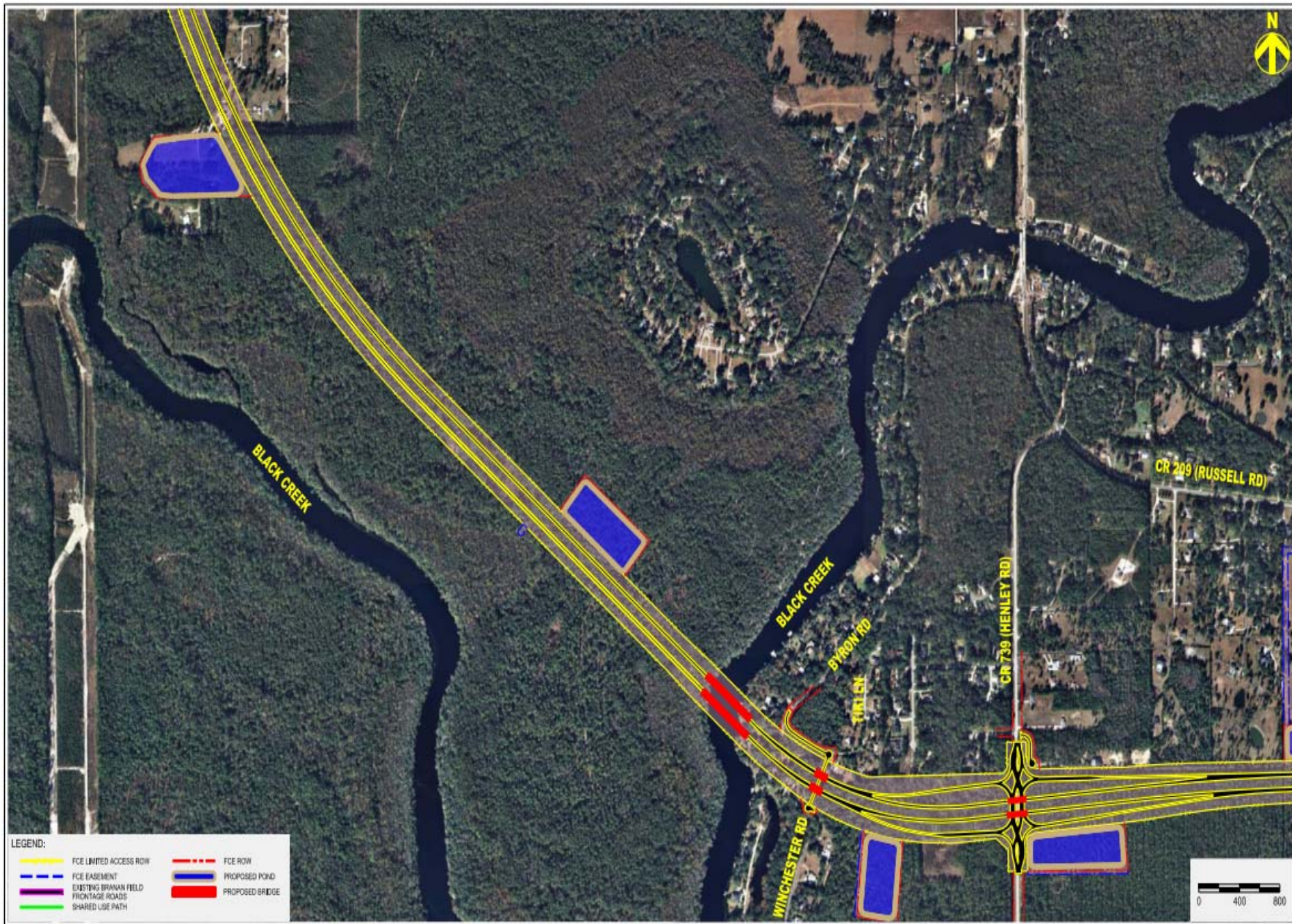
First Coast Expressway



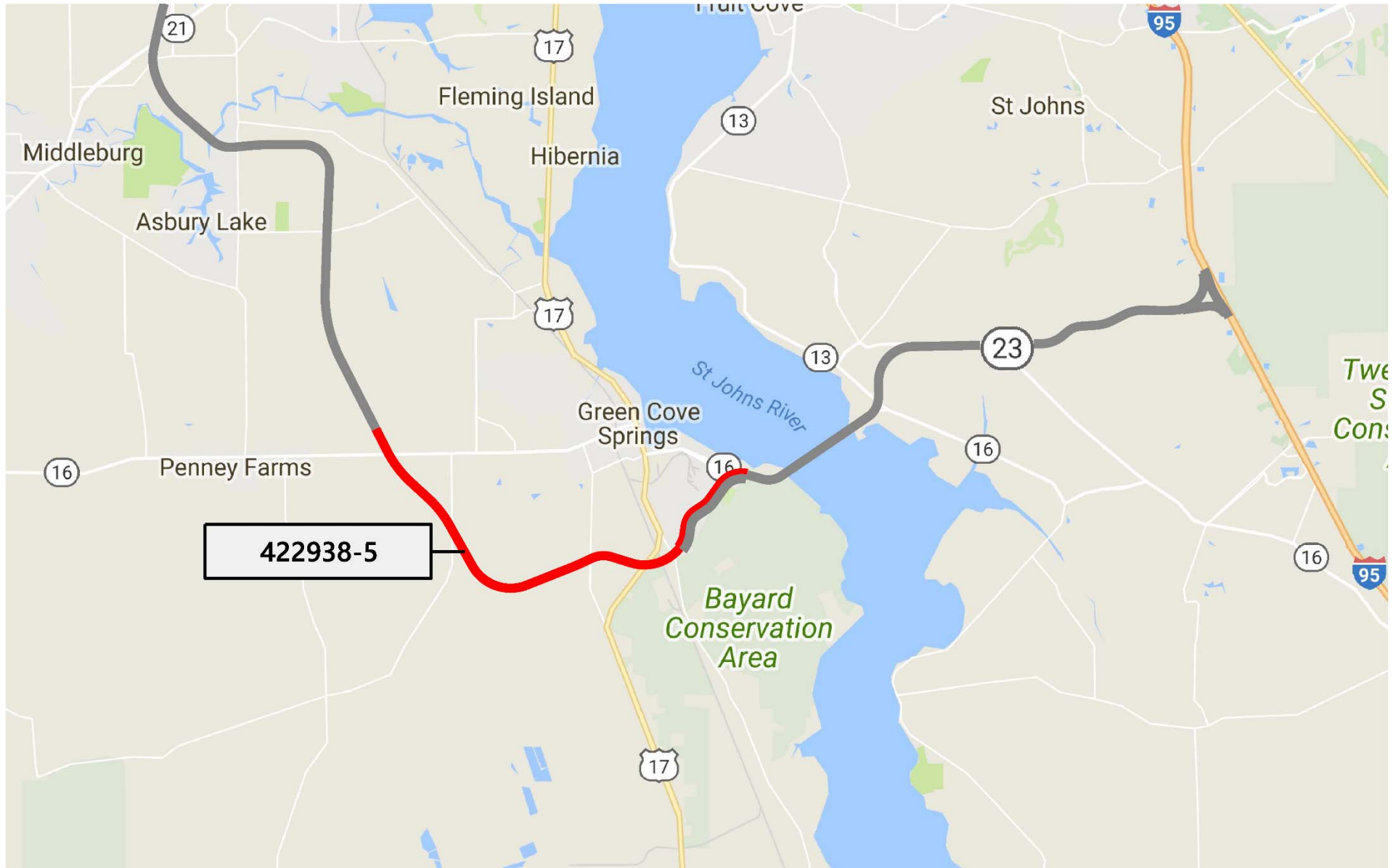
What's left to construct? 422938-6-52-01

- 11 mile limited access toll facility on new alignment
- 4-lane limited access toll expressway from north of SR 16 to SR 21 in Clay County
- Interchanges at future CR 218 Bypass, CR 739/Henley Road and SR 21
- Bridges over Bradley Creek, Black Creek, Grog Branch Tributary, and Grog Branch





What's left to construct? 422938-5-52-01



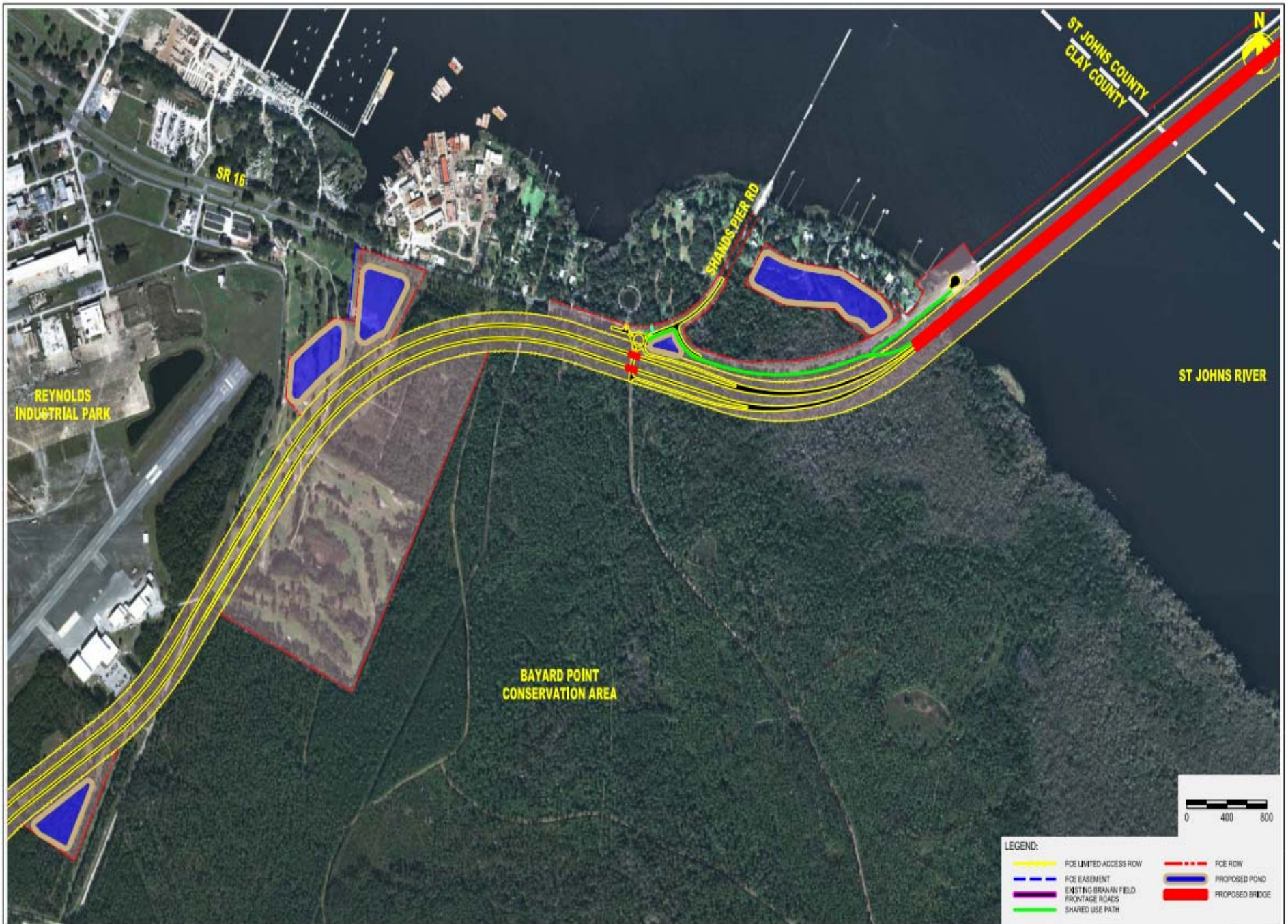
First Coast Expressway



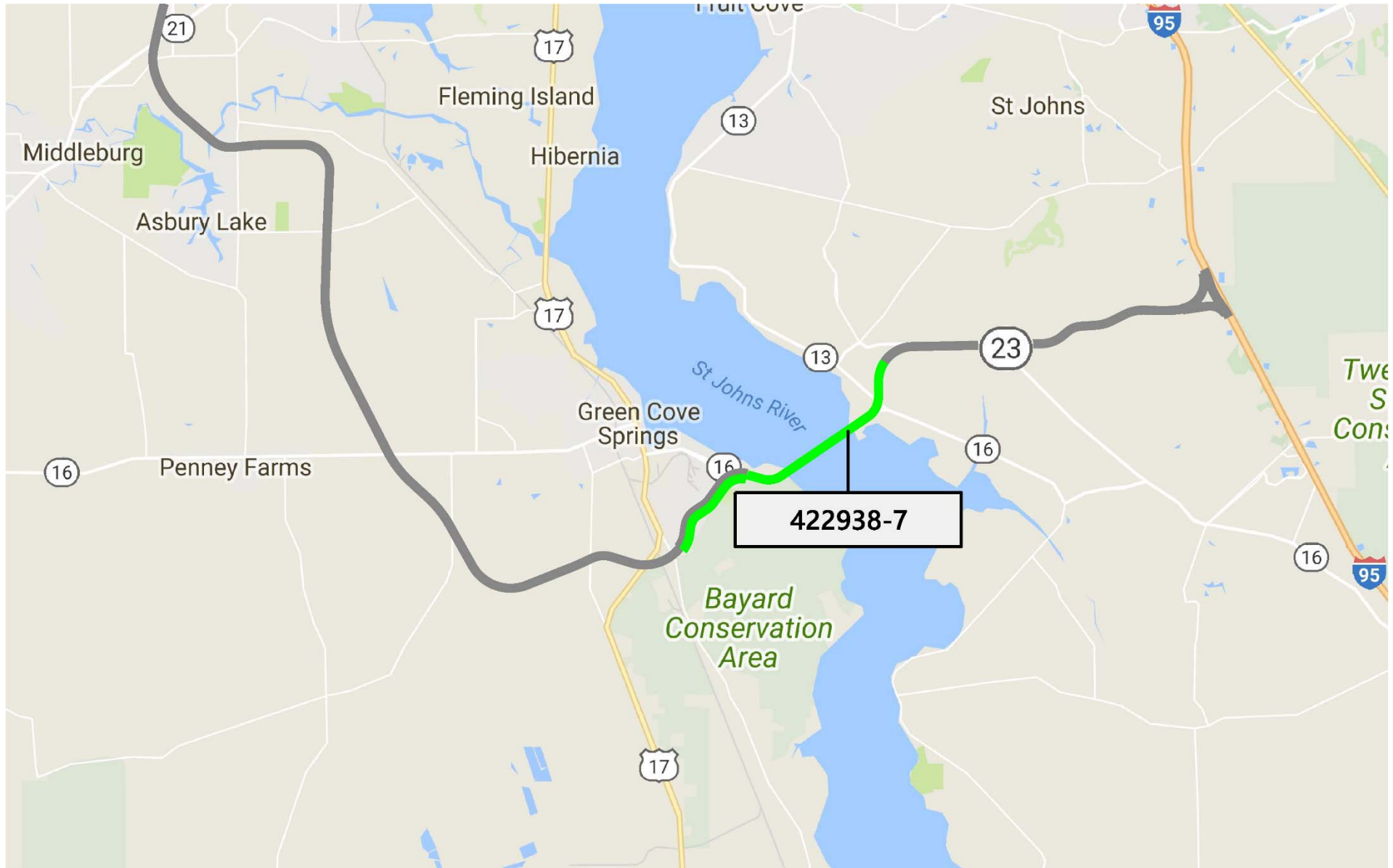
What's left to construct? 422938-5-52-01

- 10 mile limited access toll facility on new alignment
- 4-lane limited access toll expressway from the St. Johns River to north of SR 16 in Clay County
- Interchanges at SR 16 and US 17
- Bayard Conservation Area





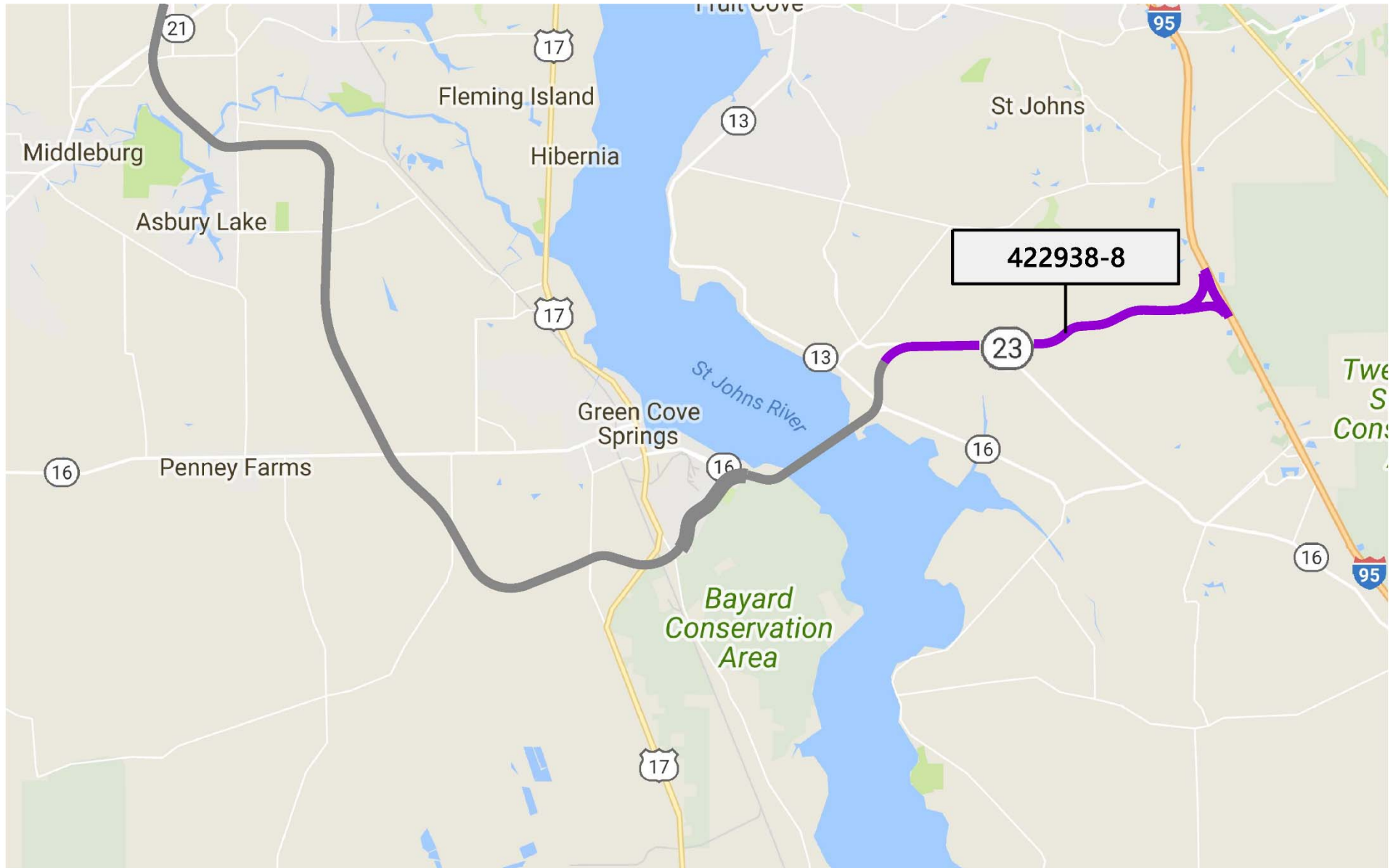
What's left to construct? 422938-7-52-01



First Coast Expressway



What's left to construct? 422938-8-52-01



First Coast Expressway



What's left to construct? 422938-7 & -8

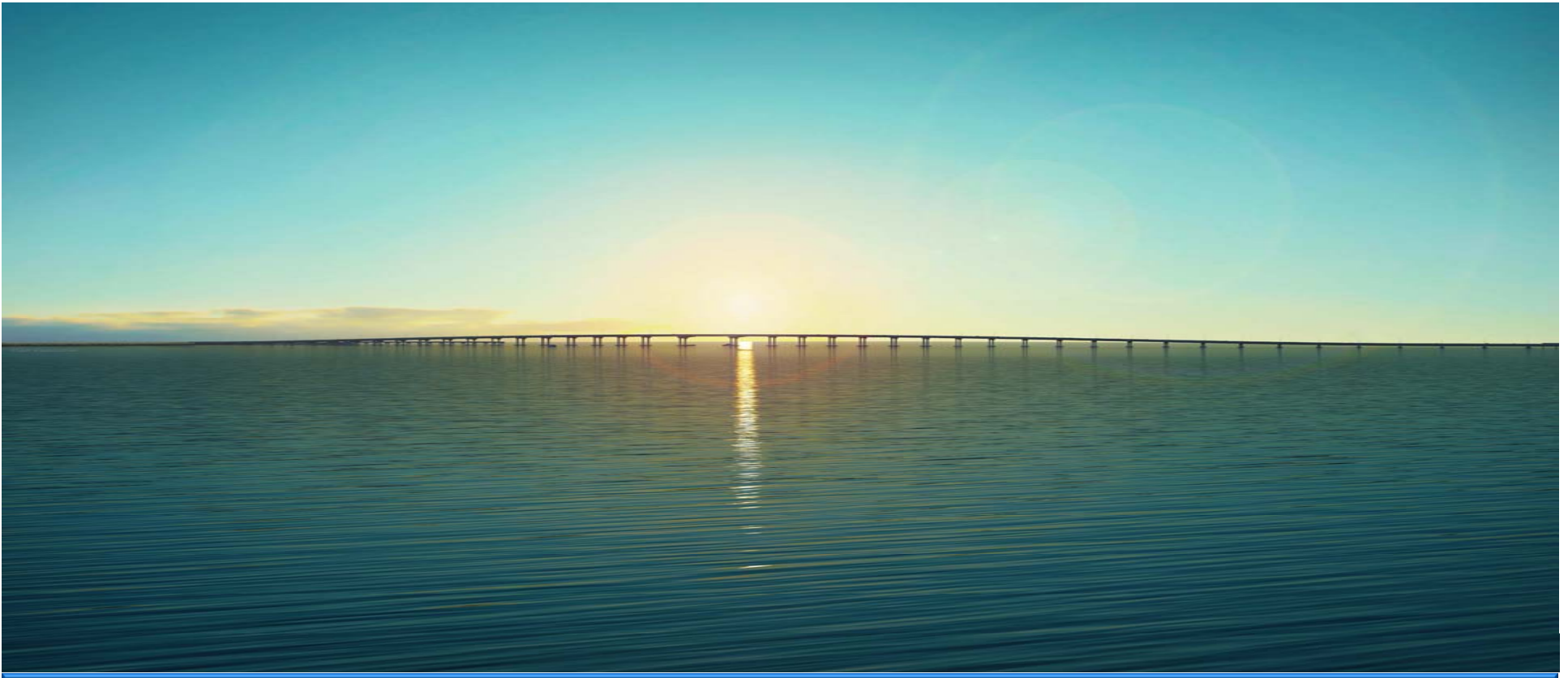
- 10.5 mile limited access toll facility on new alignment
- 4-lane limited access toll expressway from west of the St. Johns River to I-95
- Interchanges at CR 16A and future CR 2209
- Bridge over St. Johns River





Thank You!

For more information, please visit the project website at:
www.firstcoastexpressway.com



First Coast Expressway

