



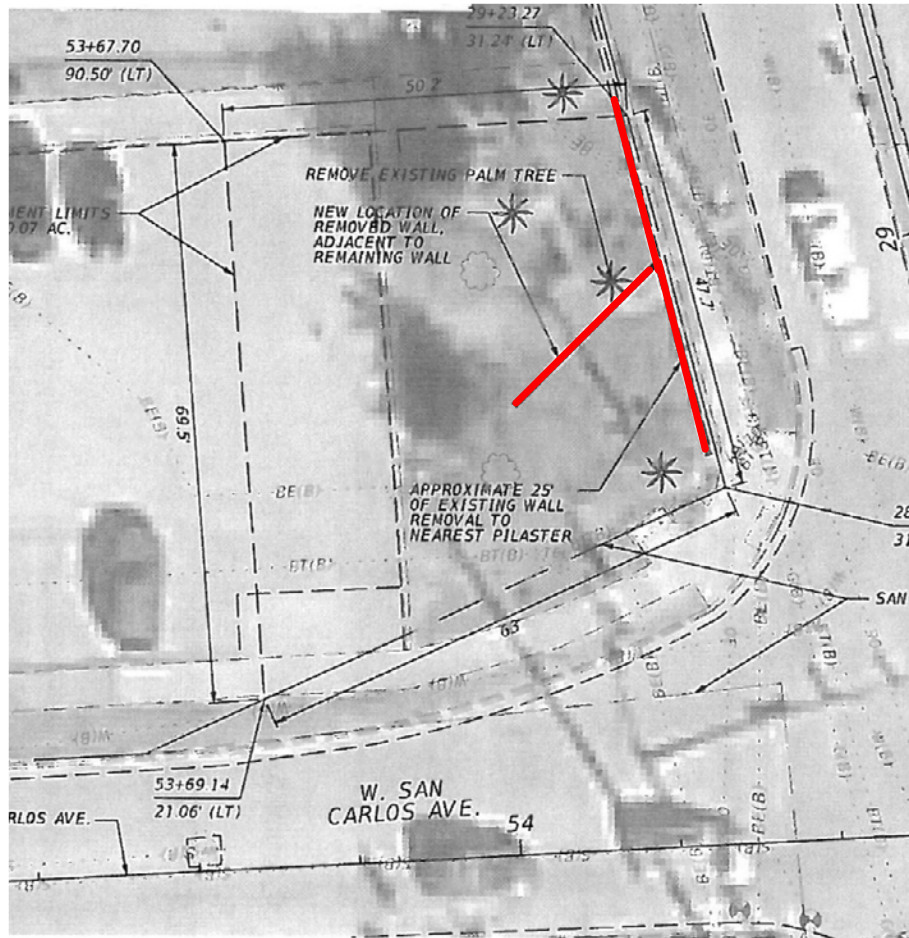
## San Marco Historic Knee Wall Relocation FM#434556-1 St Augustine, Florida



- Intersection of San Marco Avenue, W. San Carlos Avenue, and May Street
- Significant Traffic; Vehicles going over curb on tight turns (especially trailers)
- Unique “roundabout” solution proposed
- Intersection is within historic district and intersection improvement would impact historic knee wall at corner of W. San Carlos and San Marco







- Potential adverse effect on wall; SHPO consultation to determine best mitigation
- Possible Options:
  - Removal of wall
  - Leave wall in position
  - Adjust wall to new intersection
- Adjusting wall by relocation maintained the historic fabric of the wall while protecting it from future traffic collisions
- Work completed by Thomas McDonald and BTS Builders















Florida Department of Transportation









Florida Department of Transportation



Florida Department of Transportation





Florida Department of Transportation





Florida Department of Transportation





Florida Department of Transportation



Florida Department of Transportation