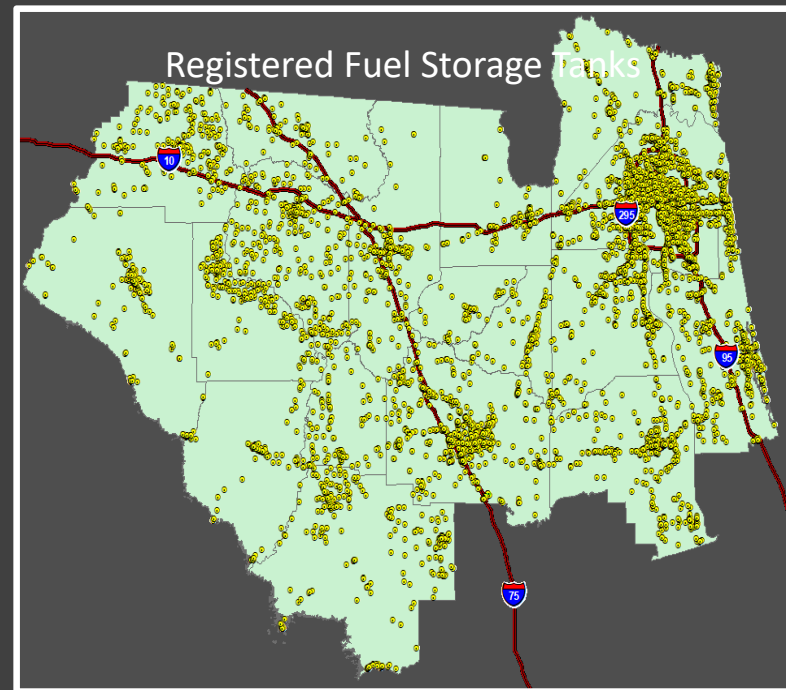


Contamination Analysis in District 2

BALDWIN BYPASS & FIRST COAST EXPRESSWAY

Fuel Storage in District 2



Landfills
Military Sites
Wood Preservation
Chemical Factories
Cattle Dip Vats



Incinerators
Used Oil Re-refineries
Recycling Plants
Railroad Yards
Bulk Fuel Facilities

US 301 Baldwin Bypass

ETDM Project #6851 - Alternatives Screening 2009

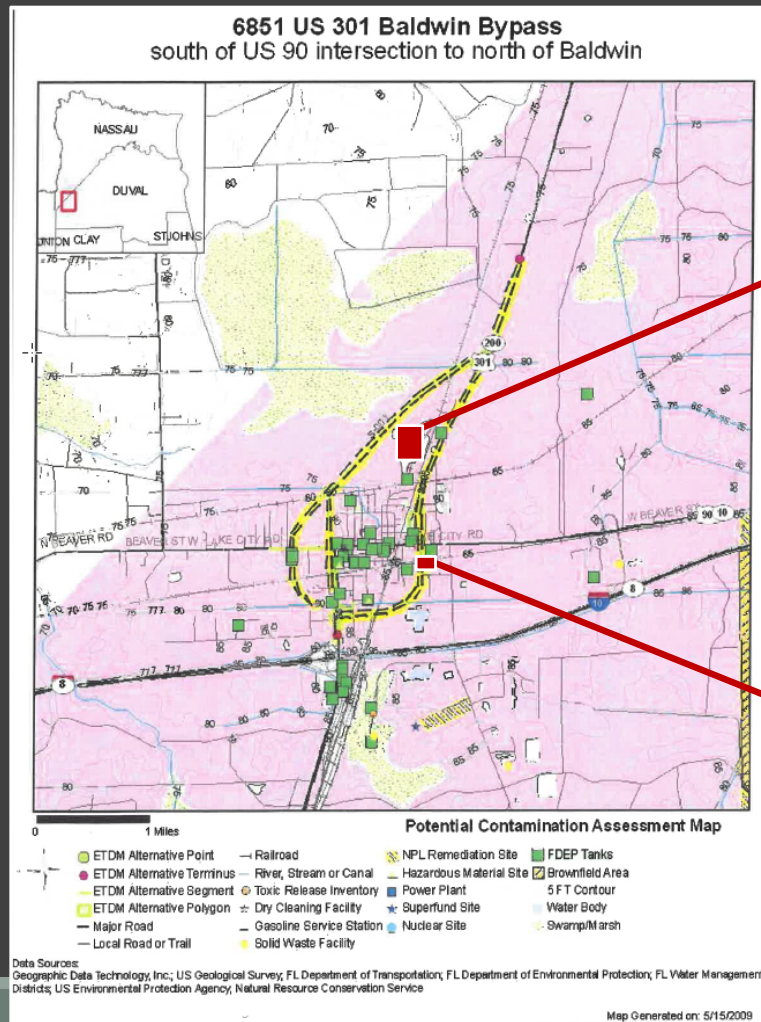
FDOT FM #209537-4

EA/FONSI 2013

Project location and description

- 7 mile new alignment to bypass US 301 around the Town of Baldwin (Duval Co)

ETDM Alternatives Analysis: Potential Contamination Assessment



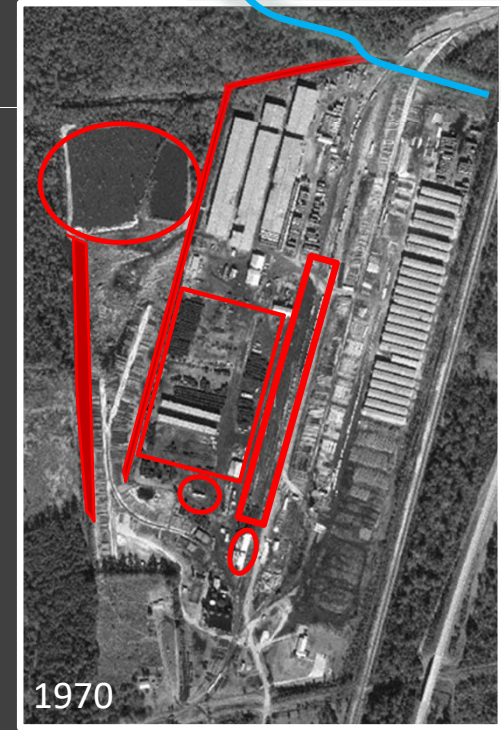
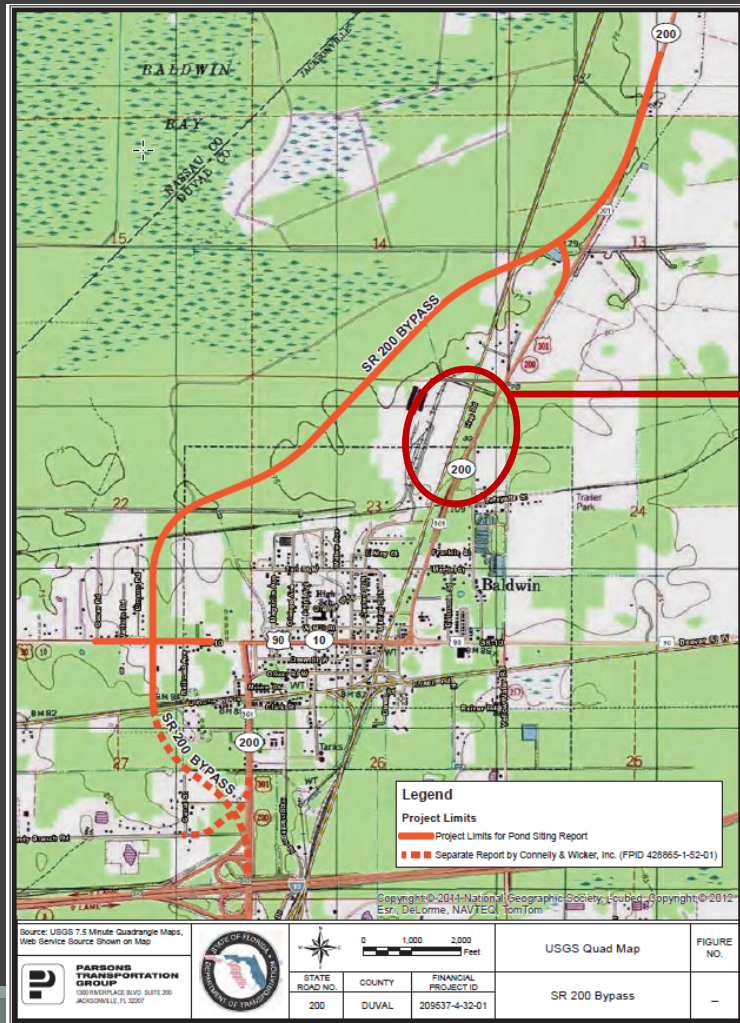
Sites of Significant Concern:

Southern Wood Piedmont:
Wood Treatment Facility
Operated 1954-1987

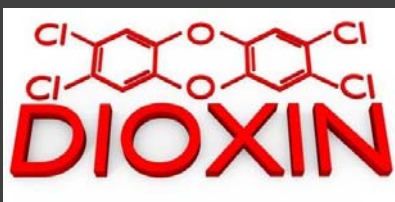


Baldwin Dump:
Unofficial City Dump
Operated 1950's-1970's

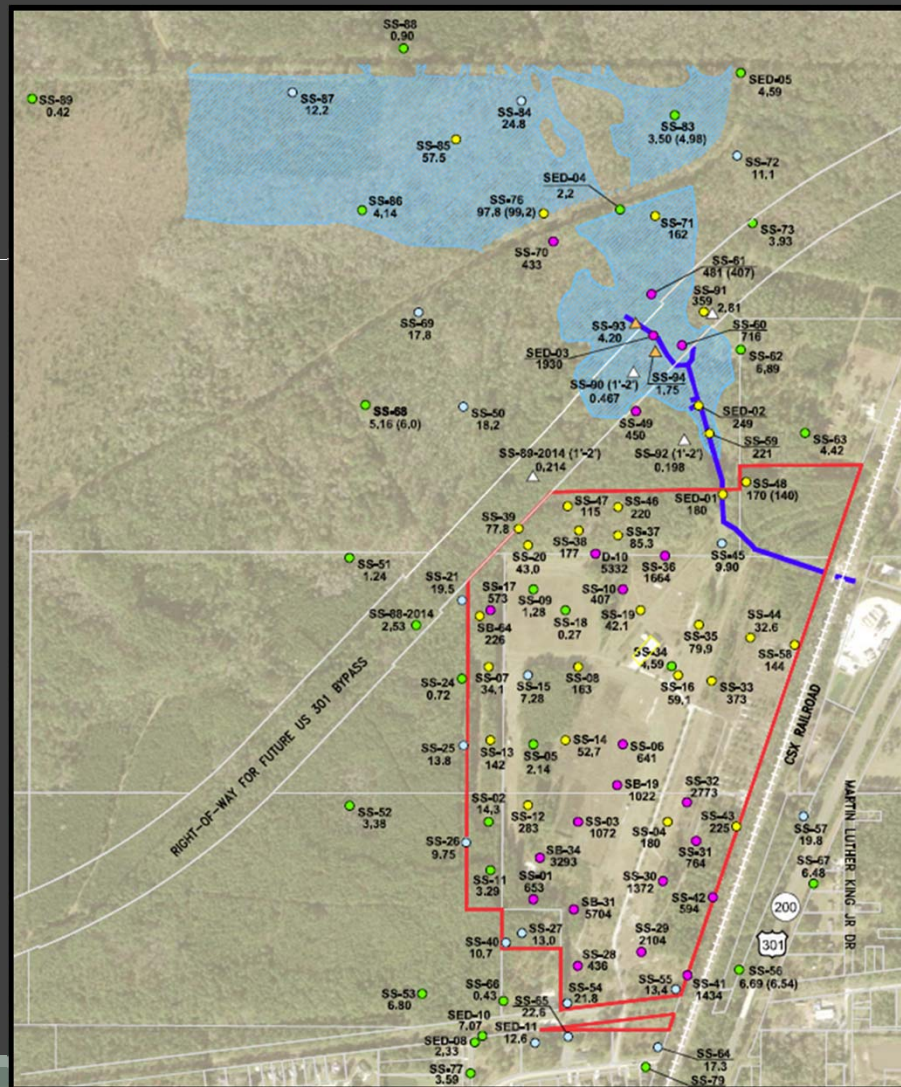
Selected Bypass Alternative: Impacted by Southern Wood Piedmont



Off Site Contamination:



Pesticide Treatment:
Creosote
Pentachlorophenol
Chromated copper



**Impacted ROW:
19 acres**

MEASURED DIOXIN CONCENTRATION SURFACE SOIL AND SEDIMENT

- TCDD-TEQ ≤ 7 ng/kg
- TCDD-TEQ 7-30 ng/kg
- TCDD-TEQ 30-400 ng/kg
- TCDD-TEQ > 400 ng/kg

Corrective measure: 1.0 ft. off the top









SR 23 First Coast Expressway

a.k.a St. Johns River Crossing, First Coast Outer Beltway, First Coast Express

ETDM Project #7920 - Alternatives Screening 2006

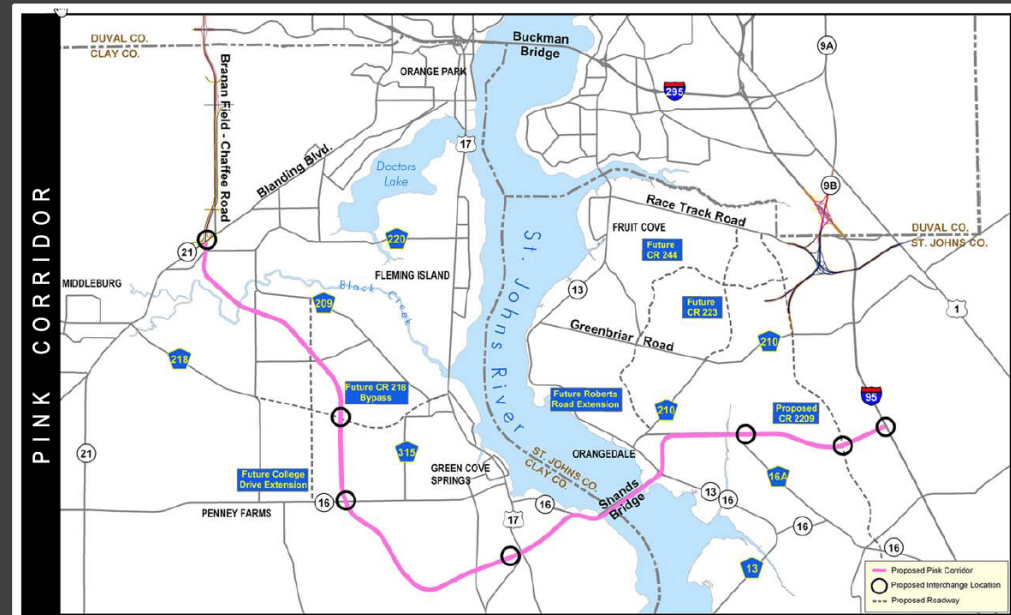
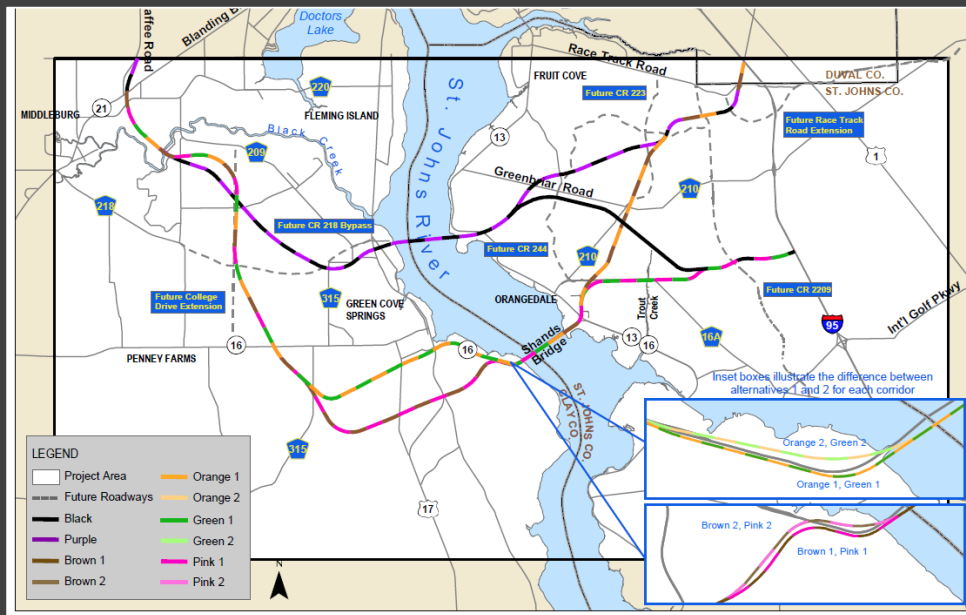
FDOT FM #208225-3

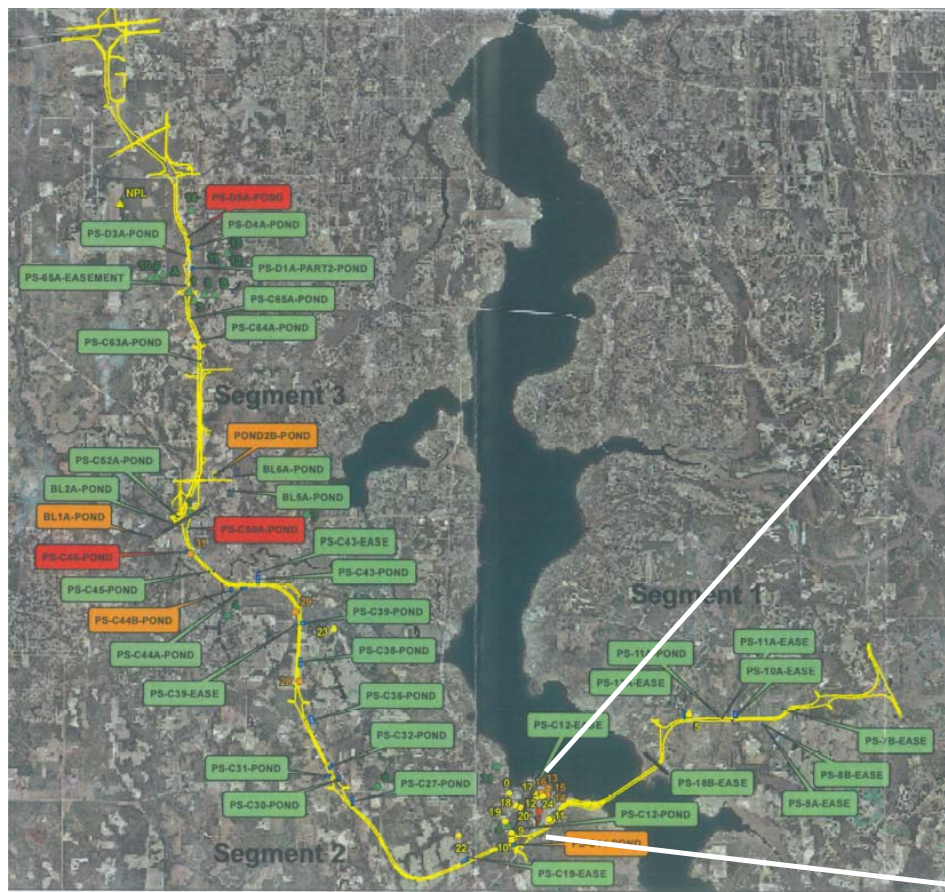
FEIS/ROD 2014

Project location and description

- 32 mile new alignment from Blanding Blvd (Clay Co) to I-95 (St. Johns Co)

Alignment Alternatives





Contamination Screening

Legend

- Ponds
- Proposed Right of Way

Risk Ratings

- High
- Medium
- Low
- None

Risk Ratings - Duval County January 7th, 2009 EDR

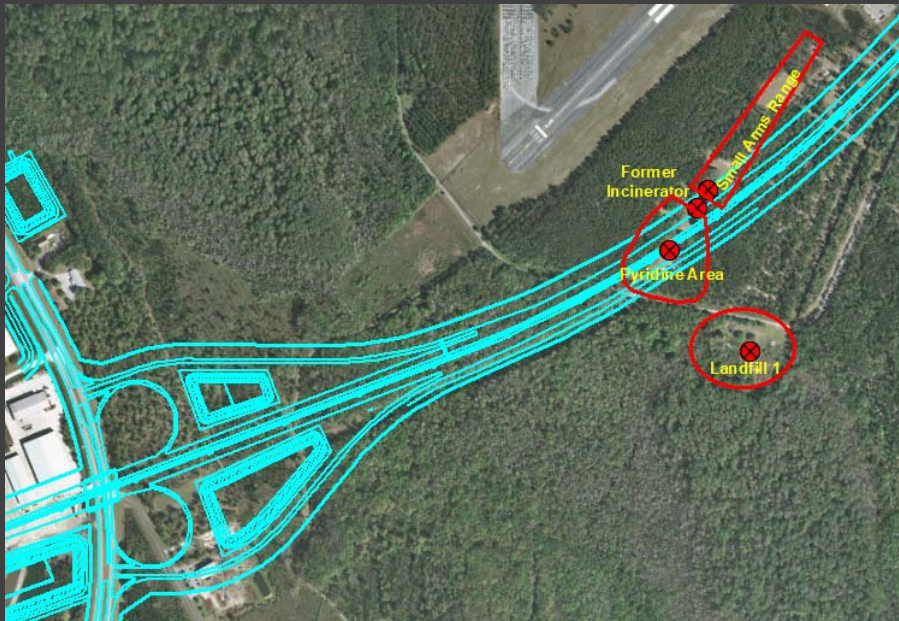
- Low
- None

Aerial Date: March 2006

Former Lee Field Naval Air Station



Lee Field Impacts to Project



Small Arms Range

Pyridine/Incinerator Area

Small Arms Range:



Project No. 783147
Description View of berm prior to excavation activities
Photograph No. No. 1
Date: 26-May-00



Project No. 783147
Description Excavation west side of berm
Photograph No. No. 3
Date: 8-Jan-04



Project No. 783147
Description View of stabilization activities
Photograph No. No. 7
Date: 22-Jan-04

2004 Source Removal – Area 200 ft. Long, 80 ft. wide; 2 ft. deep

Lead Impacts - 2,000 tons excavated soils

Pyridine Area:



PBA TCRA – Empty, rusted drum remnants excavated (8-21-14).



PBA TCRA – Excavation boundary sampling (8-25-14).



PBA TCRA – Northern portion of excavation during backfilling (8-20-14). Note minimal amount of groundwater in excavation.

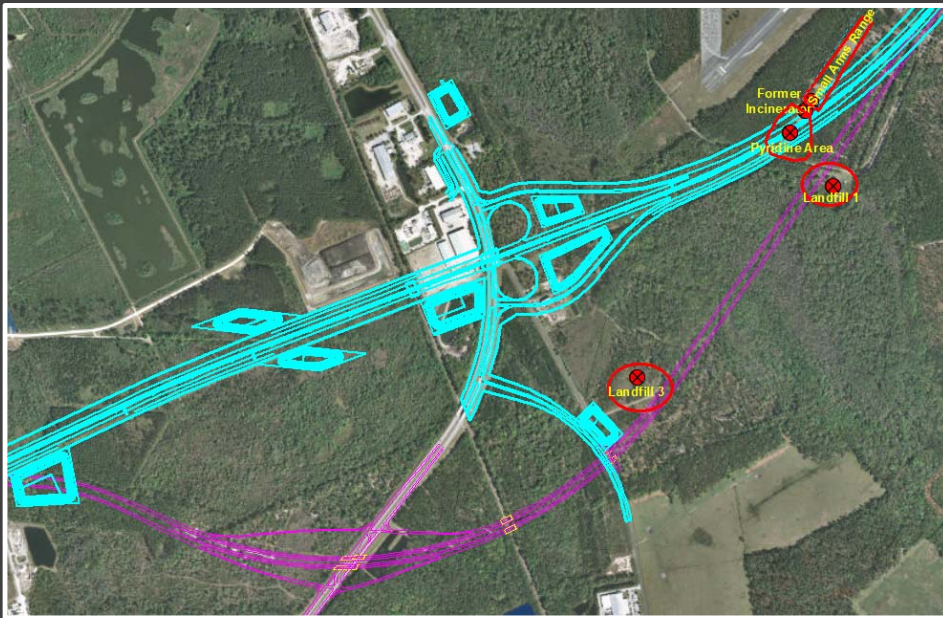


PBA TCRA – Completed backfilled and graded excavation area (8-28-14).

2014 Source Removal – Area 440 ft. Long, 80 ft. wide; 5 ft. deep

Pyridine Impacts - 5,000 tons buried waste/debris and contact soils

New ROW Alignment Shift = New Avoidance Shift(s)



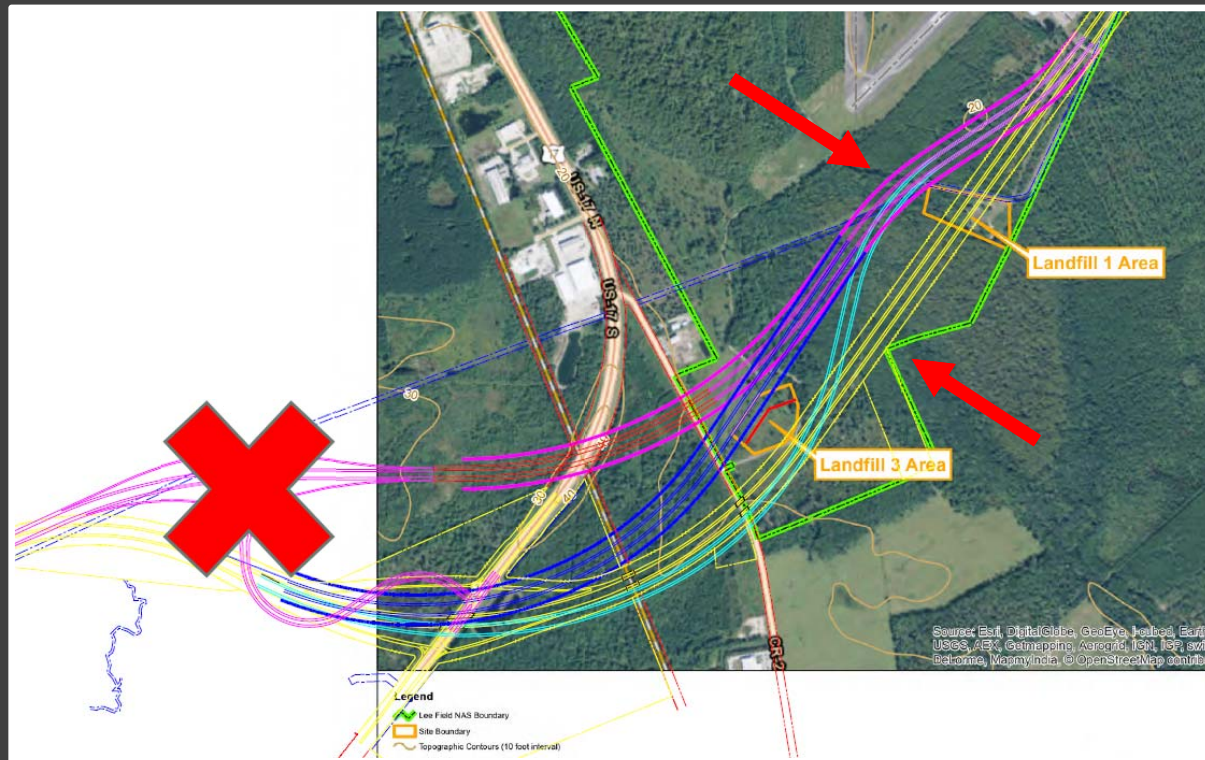
Planned US 17 Interchange: Cost Prohibitive

\$120 M current business damages

\$30 M additional ROW acquisition

Future Runway Expansion -> \$ New airport

Re-Alignment Analysis



Delicate Balancing Act: Cost, Engineering, Environmental Impact

