

Florida Department of Transportation District Seven

Efficient Transportation Decision Making Process

Ongoing and Upcoming Project Reviews
ETAT Webinar

October 24, 2017



Ongoing and Upcoming Project Reviews

- Southbound I-75/I-275: South of County Line Road to SR 56
- Gandy Boulevard: East of 4th Street to Westshore Boulevard
- South Maydell Drive Bridge over Palm River
- US 41 @ CSX Grade Separation South of Causeway Boulevard

Southbound I-75/I-275: South of County Line Road to SR 56



- ETDM # 14330
- Hillsborough and Pasco Counties
- Construction of a southbound collector distributor (C-D) road
- Approximately 5.7 miles
- Programming Screen
- Currently in ETAT review; comments due November 9th.
- Project Manager: Ashley Henzel

Southbound I-75/I-275: South of County Line Road to SR 56

Location Map



Southbound I-75/I-275: South of County Line Road to SR 56

Purpose and Need

- Improve operations on I-75 southbound
- This project is needed to address the effect on operations by reducing the number of weaving vehicles in the project area.



I-75/I-275 looking southbound

Southbound I-75/I-275: South of County Line Road to SR 56

Community and Cultural Considerations

- No residential areas (within the 500-foot project buffer area)
- Two DRIs at SR 56 interchange - Cypress Creek and Cypress Creek Town Center
- Future land use maps indicates residential future lands uses along the corridor
- The EST did not identify any social resources (within the 500-foot project buffer area)
- Archeological sites – 10 sites; 9 not eligible for listing in the NRHP and 1 site, Pumpkin Cow (8HI11453), has not been evaluated for NRHP eligibility by the SHPO

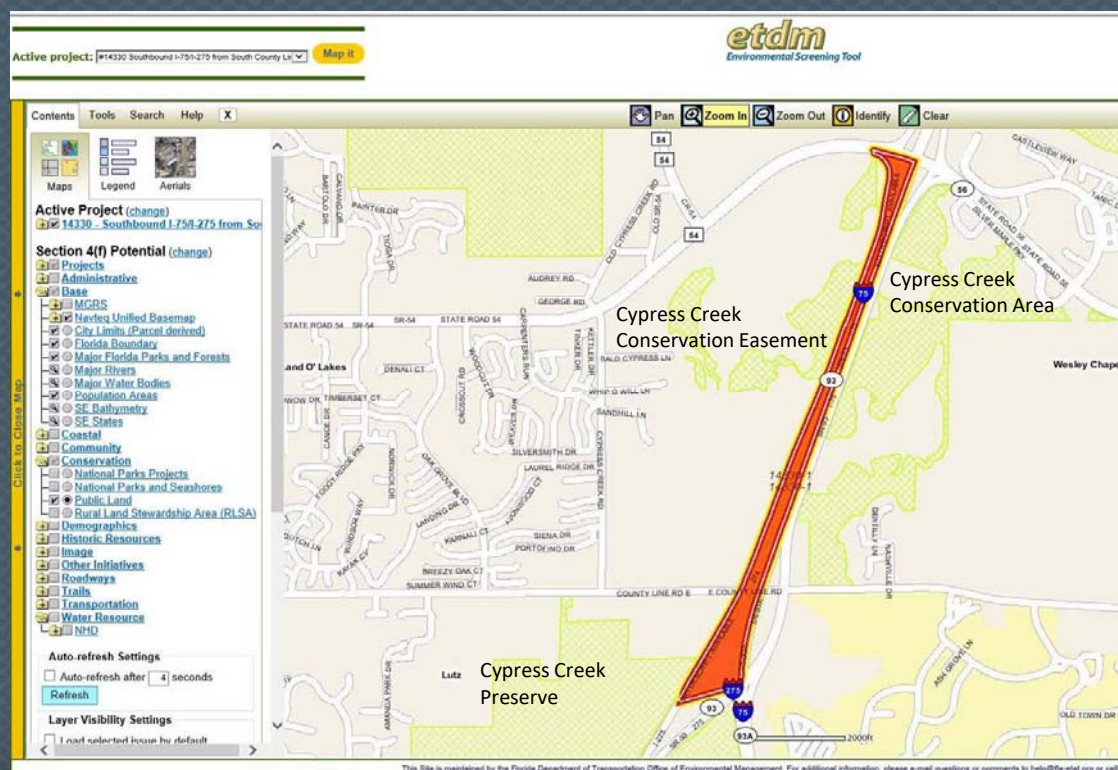


DRIs located at the SR 56 Interchange

Southbound I-75/I-275: South of County Line Road to SR 56

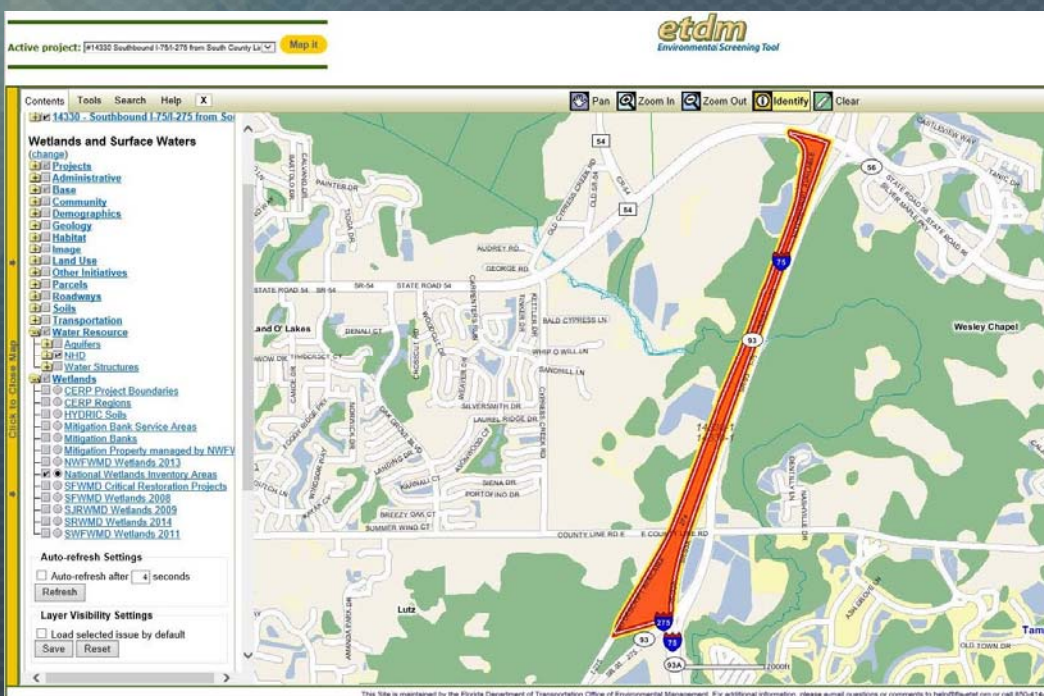
Community and Cultural Considerations

- There are three public lands:
 - Cypress Creek Preserve (Hillsborough County)
 - Cypress Creek Conservation Easement (Pasco County)
 - Cypress Creek Conservation Area (Pasco County)



Southbound I-75/I-275: South of County Line Road to SR 56

Environmental Considerations



National Wetlands Inventory Areas

- Prime Farmland
- Cypress Creek is a Verified Impaired Florida Waters and is a tributary to the Hillsborough River, an Other OFW.
- Special Flood Hazard Areas - 261 acres (69%) in Zone AE
- NWI - 120 acres (32%) of palustrine wetlands and 3 acres (<1%) of riverine wetlands
- Wetlands are primarily stream and lake swamps, freshwater marshes, cypress, wetland forested mixed, and emergent aquatic vegetation.

Southbound I-75/I-275: South of County Line Road to SR 56

Additional Environmental Considerations

- Rare and imperiled fish - Ironcolor Shiner in the Lower Cypress Creek
- Wood Stork Core Foraging Areas and FWC wildlife observation for the Wood Stork
- Bald eagle nest located on the southeast corner of I-275 and East County Line Road approximately 700 feet from the project area



Transportation Office of Environmental Management. For additional information, please e-mail questions to

Bald Eagles Nest Location

Gandy Boulevard: East of 4th Street to Westshore Boulevard



- ETDM # 14335
- Pinellas and Hillsborough Counties
- The improvements include roadway widening from four to six lanes and bicycle-pedestrian accommodations along the entire corridor.
- Bridge widening or replacement is anticipated for this project over Old Tampa Bay, a navigable waterway.
- Approximately 7 miles
- Programming Screen
- Project Manager: Lilliam Escalera

Gandy Boulevard: East of 4th Street to Westshore Boulevard

Project Location



Gandy Boulevard: East of 4th Street to Westshore Boulevard

Purpose and Need

- Provide for increased vehicular capacity as well as bicycle and pedestrian facilities
- Address current and future roadway capacity deficiencies
- Deficient level of service (LOS) in both 2016 and 2040
- No on-street bicycle facilities are present on Gandy Boulevard within the study area.



Gandy Bridge looking northwest from the Tampa Bay side

Gandy Boulevard: East of 4th Street to Westshore Boulevard

Community and Cultural Considerations

- Land Use
 - Bays and Estuaries - 56%
 - Transportation - 13%
 - Residential, High Density - 6%
 - Commercial and Services - 6%
- 773 households with a population of 1,492 people
- Minority population makes up 26% of the total population
- Several parks and recreational trails
- One archaeological site - not eligible for listing in the NRHP
- Ten historic structures: seven determined not eligible, two have not been evaluated by the SHPO, and Yardage Unlimited (8PI487) has been determined eligible for listing in the NRHP by the SHPO
- Three resource groups: two not eligible and one resource group, Derby Lane (8PI12021), was determined eligible for listing in the NRHP by the SHPO



Historic photographs of Derby Lane

Gandy Boulevard: East of 4th Street to Westshore Boulevard

Environmental Considerations

- Special Flood Hazard Areas –
 - 403 acres (40%) in Zone VE
 - 360 acres (29%) in Zone AE
- Seven waterbodies, two are Verified Impaired Florida Waters
 - Roosevelt Basin (Channel 2 Subbasin)
 - Tinney Creek
- NWI dataset identified 582 acres (57%) of estuarine wetlands and 7 acres (<1%) of palustrine wetlands.
- Wetlands are primarily mangrove swamps with some stream and lake swamps (bottomland), emergent aquatic vegetation, salt flats, and saltwater marshes.



On Gandy Bridge looking east towards Tampa

Gandy Boulevard: East of 4th Street to Westshore Boulevard

Additional Environmental Considerations

- FWC state manatee protection zone
- FWC wildlife observations for the mixed shore birds
- Woodstork Core Foraging Area
- Rare and imperiled fish: Mangrove rivulus in Tampa Bay, Cross Bayou Canal, and Grand Bayou; and the Opossum pipefish in Tampa Bay
- Pinellas County Aquatic Preserve
- Environmentally sensitive shorelines
- Submerged lands - 57%



Gandy Boulevard and Brighton Bay Boulevard Intersection



Gandy Bridge looking northwest from the Tampa Bay side

Gandy Boulevard: East of 4th Street to Westshore Boulevard

Additional Environmental Considerations



- Weedon Island Preserve
- Potential Seagrass impacts
- Adequate FDOT right-of-way width along causeway

Seagrass Locations

South Maydell Drive Bridge over Palm River

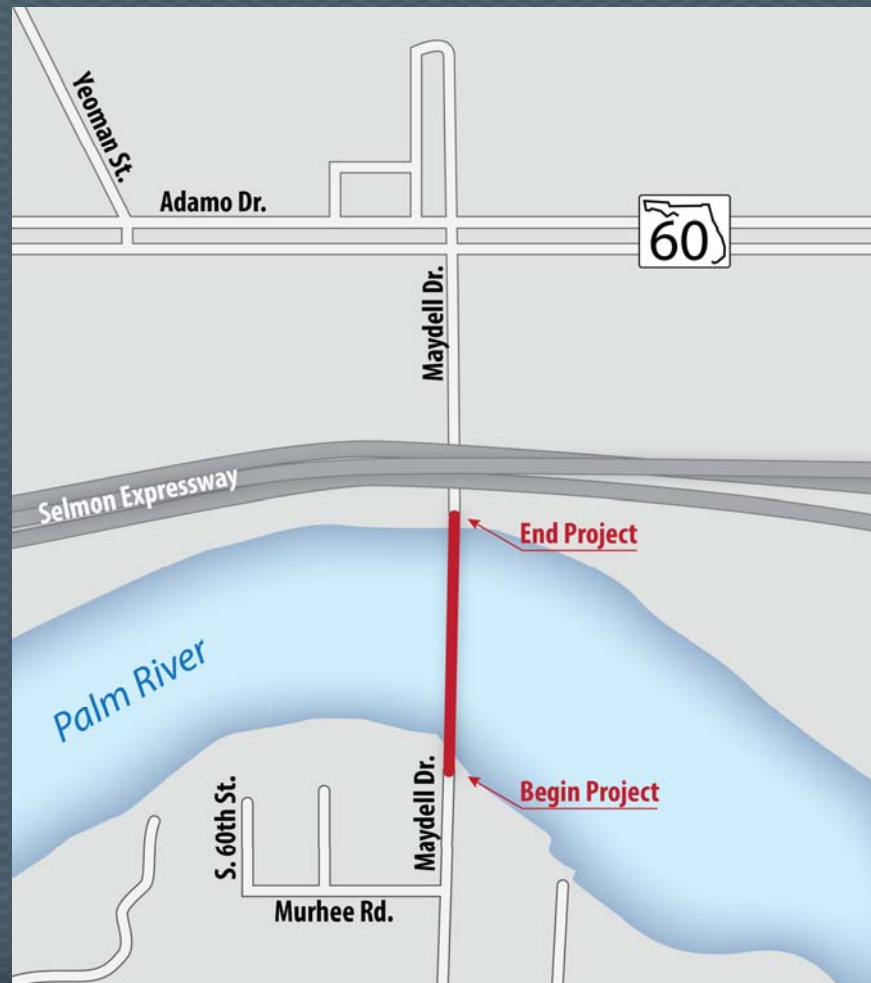
- ETDM # 14344
- Hillsborough County
- Bridge Replacement
- Approximately 0.14 mile
- Programming Screen
- Project Manager: Nicole Selly



Maydell Bridge looking north towards the Selmon Expressway

South Maydell Drive Bridge over Palm River

Project Location



South Maydell Drive Bridge over Palm River

Purpose and Need

- Bridge is structurally deficient
- Bridge is currently closed to traffic
- Bridge replacement would occur within right-of-way



Maydell Bridge closure looking north towards the Selmon Expressway

South Maydell Drive Bridge over Palm River

Community and Cultural Considerations

- Land Use
 - Streams and Waterways (16%)
 - Residential Medium Density (8%)
 - Transportation (6%)
 - Industrial (5%)
- 15 households with a population of 41 people
- Minority population makes up 78% of the total population
- The EST did not identify any social resources (within the 500-foot project buffer area)
- The EST did not identify any cultural resources (within the 500-foot project buffer area using the Area of Interest Tool)
- SUNTrail network – South Coast Greenway Corridor and Selmon Greenway Connector



South Coast Greenway and Selmon Greenway Connector Corridors

South Maydell Drive Bridge over Palm River

Environmental Considerations

- Prime Farmland
- One waterbody - Verified Impaired Florida Waters
 - Palm River
- Special Flood Hazard Areas –
 - 14 acres (41%) in Zone AE
- NWI - 15 acres (42%) of estuarine wetlands and <1 acre (3%) of palustrine wetlands



Maydell Bridge looking south towards Palm River neighborhood

South Maydell Drive Bridge over Palm River

Additional Environmental Considerations

- There are rare and imperiled fish (Ironcolor shiner) in the Delaney Creek-Archie Creek Frontal
- Woodstork Core Foraging Area
- Submerged lands - 41%
- Environmentally sensitive shorelines



US 41 @ CSX Grade Separation South of Causeway Boulevard



- ETDM # 14345
- Hillsborough County
- Reevaluation of PD&E Study will be conducted starting in 2018
- Grade separation at the railroad and intersection improvements
- Advance Notification Only
- Project Manager: Lilliam Escalera

US 41 @ CSX Grade Separation South of Causeway Boulevard

Project Location



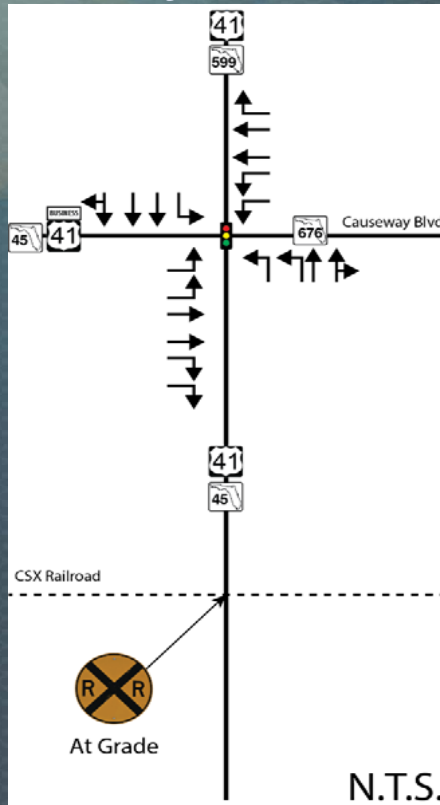
US 41 @ CSX Grade Separation South of Causeway Boulevard

Project Objectives

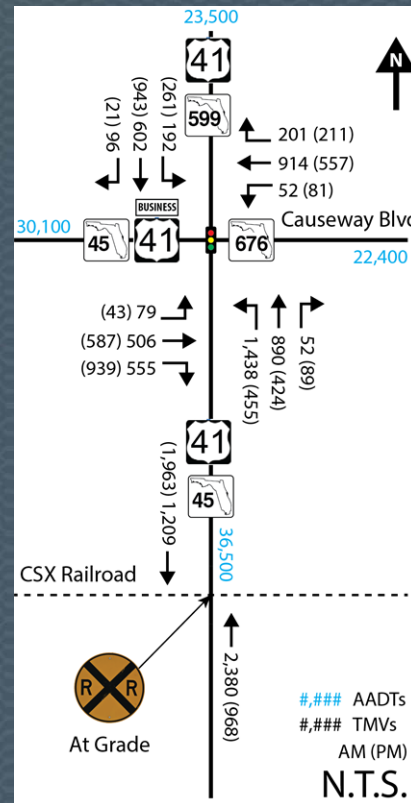
- Grade separation major improvement:
 - US 41/SR 45 @ CSX Railroad crossing 624802A
 - US 41/SR 45 @ Causeway Boulevard
- Proposed frontage roads at US 41/SR 45
- Proposed reconstruction of existing 6-lane roadway at Causeway Boulevard (concrete)
- Heavy truck traffic (10% - 15% daily volume)
- Increase mobility
- Pedestrian and bicyclist accommodations

US 41 @ CSX Grade Separation South of Causeway Boulevard

Project Overview - Traffic



Study Year (2016) – Lane Configuration



Study Year (2016) – AADT

Intersection	AM Peak		PM Peak	
	Vehicle Delay	LOS	Vehicle Delay	LOS
US 41 and Causeway Boulevard	104.5	F	45.4	D

Study Year (2016) – Vehicle Delay and Level of Service (LOS)

Source: US 41 (SR 45) at SR 676 (Causeway Boulevard) Intersection Study; February 2017

US 41 @ CSX Grade Separation South of Causeway Boulevard

Project Overview - CSX

Daily CSX crossings:

- Average number of times gate closes: 28



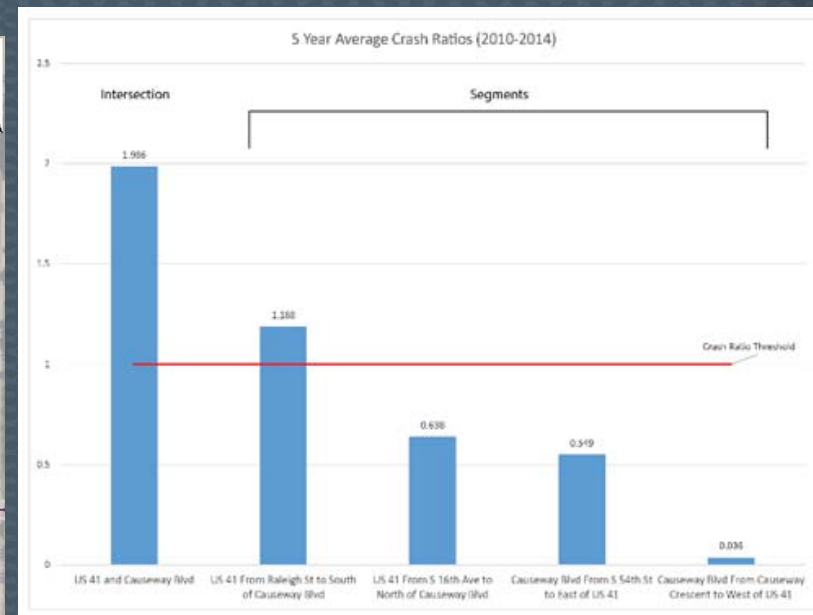
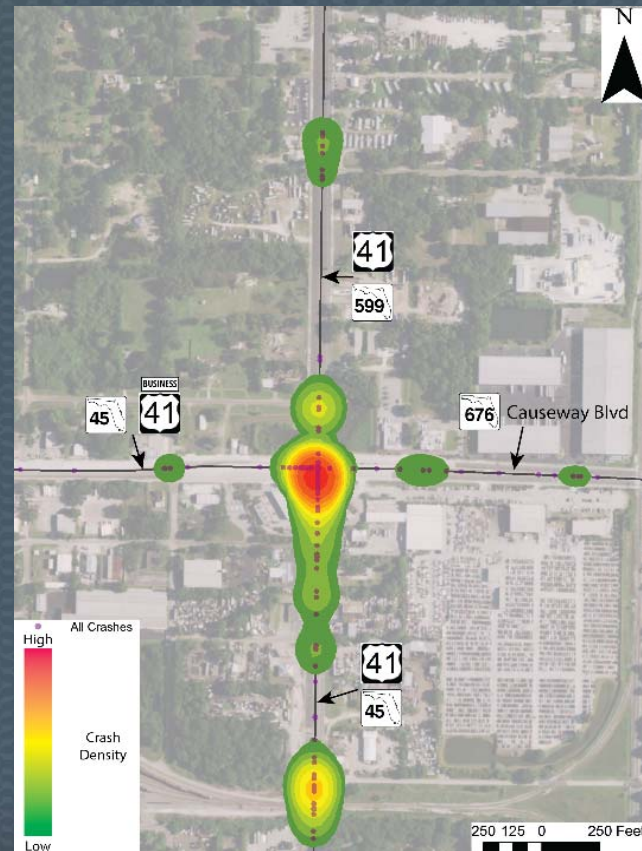
US 41 looking south at CSX crossing

	Average number of gate closures	Average queue clear time (NB approach)
AM Peak	4	43.9 minutes
PM Peak	1	2.2 minutes

US 41 @ CSX Grade Separation South of Causeway Boulevard

Project Overview – Traffic Safety

- 336 total crashes between 2010 and 2014
- 28.6% nighttime crashes
- 29.1% truck related



US 41 @ CSX Grade Separation South of Causeway Boulevard

Community and Cultural Considerations

- Land Use
 - Commercial and Services - 37%
 - Industrial – 17%
 - Transportation - 14%
 - Open Land - 11%
- 136 households with a population of 357 people
- Minority population makes up 63% of the total population
- Spanish-speaking population – potential Limited English Proficiency
- Five mobile home/RV parks
- Historic Bridge – Delaney Creek (HI12023) – ineligible for the NRHP
- Four resource groups: three not eligible and one resource group, CSX railroad (HI10237), was determined eligible for listing in the NRHP by the SHPO
- Brownfield Location Boundaries –
 - Delaney Creek Brownfield Redevelopment Area
 - Pendola Point Brownfield Area



Causeway Boulevard and 50th Street Intersection looking east

US 41 @ CSX Grade Separation South of Causeway Boulevard

Environmental Considerations

- Farmlands of Unique Importance
- Special Flood Hazard Areas – 431 acres (99%) in Zone AE
- Restoration Area Plan – Tampa Bay
- Four waterbodies, three are Verified Impaired Florida Waters
 - Port Sutton Ditch
 - Delaney Creek (Tidal)
 - Unnamed Ditch
- NWI - 13 acres (3%) of palustrine wetlands and 2 acres (<1%) of estuarine wetlands
- Wetlands are primarily wetlands forested mixed, intermittent ponds, freshwater marshes, and saltwater marshes.



Wetlands locations

US 41 @ CSX Grade Separation South of Causeway Boulevard

Additional Environmental Considerations

- Woodstork Core Foraging Area
- Submerged lands - 1.2%
- Environmentally sensitive shorelines
- Superfund Hazardous Waste Site (Non-National Priorities List) – GNB Inc. located at US 41 and 36th Street
- Three toxic release inventory sites

Contacts

Nicole Selly
District 7 ETDM Coordinator
(813) 975-6455
Nicole.Selly@dot.state.fl.us

Wendy Lasher, AICP
ATKINS
ETDM Support Specialist
(813) 281-8309
wendy.lasher@atkinsglobal.com