

West Bay Parkway Extension Corridor Feasibility Study

FIN 424464-4; ETDM 14207

Presentation for:

Environmental Technical Advisory Team (ETAT) Update

September 24, 2015

Prepared by:



Purpose of Today's Meeting

- Address your questions prior to Alternative Corridor Evaluation (ACE) Report
- Start to identify viable alternatives for potential PD&E/NEPA study phase

etdm

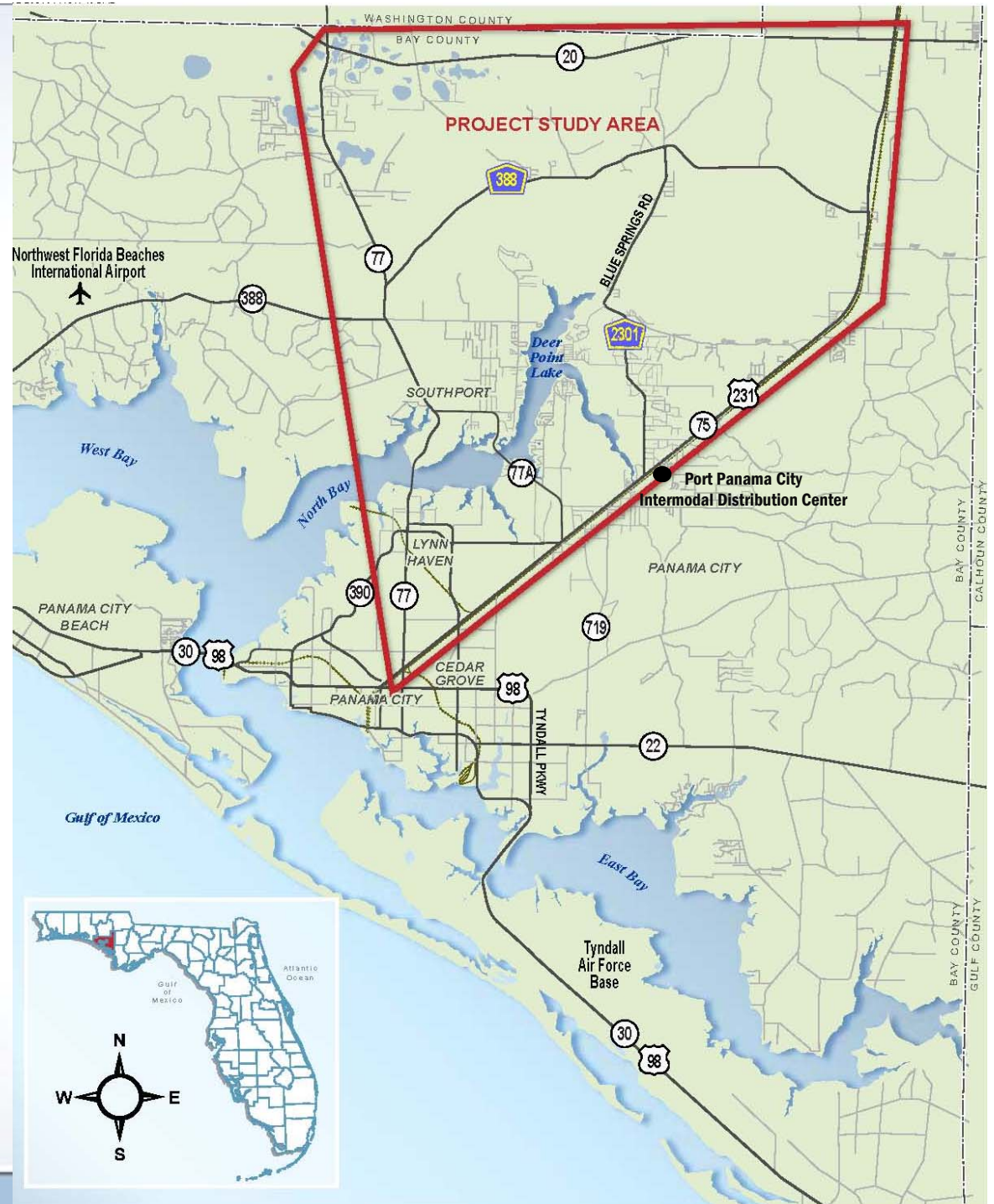
Efficient Transportation Decision Making

ACE
PROCESS →

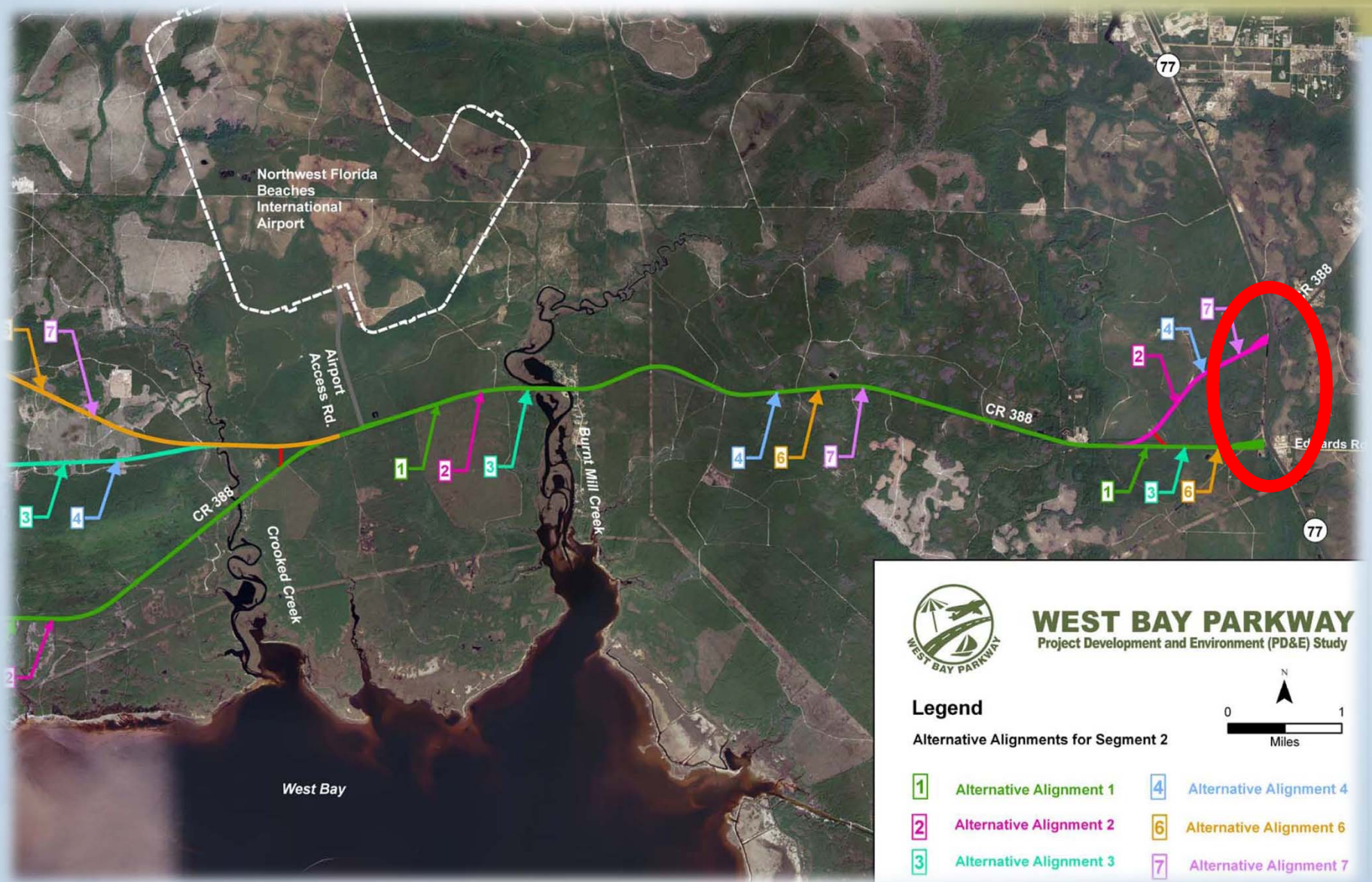


Project Overview

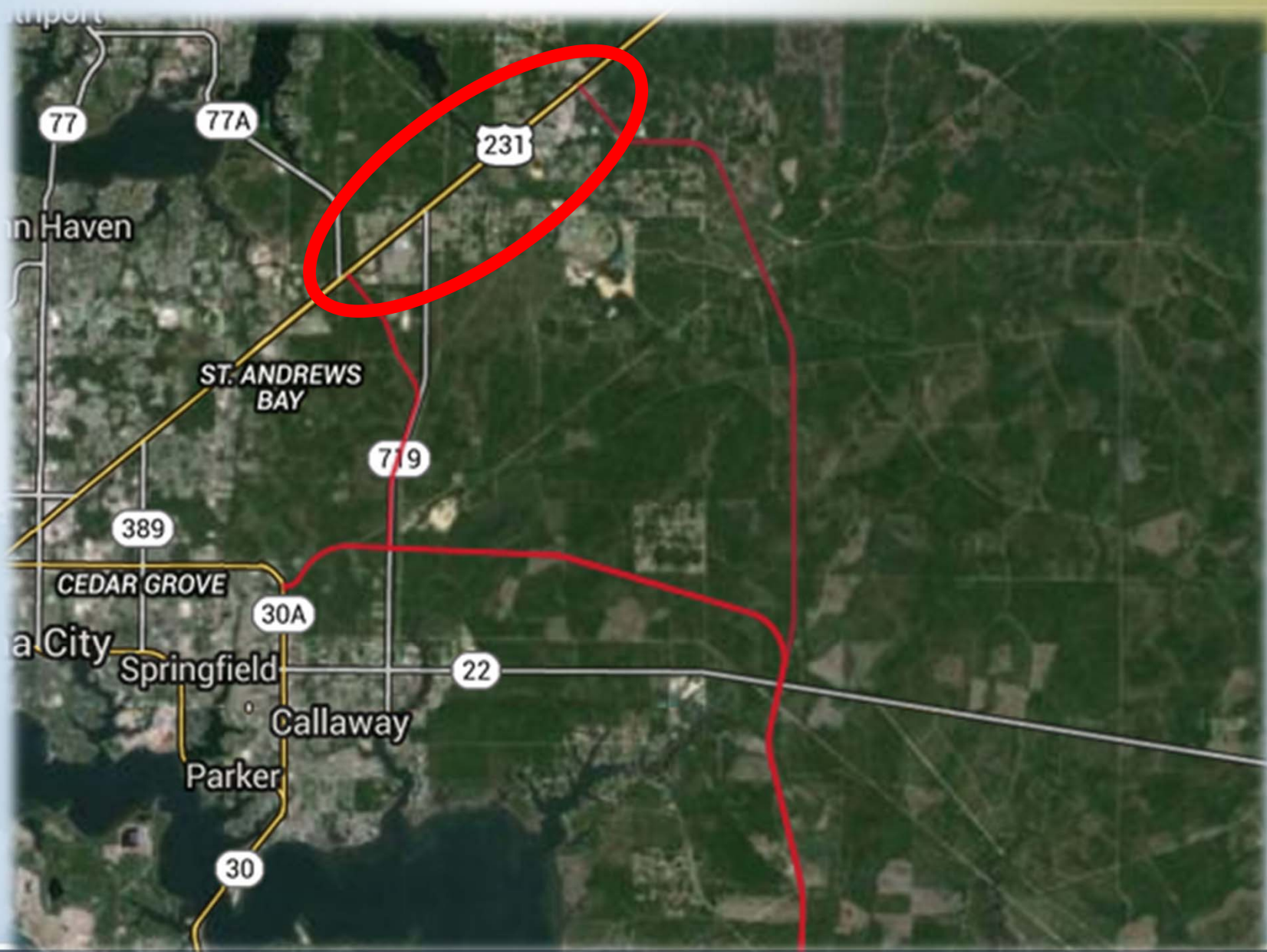
- Connector between SR 77 and US 231
- Gulf Coast Parkway and West Bay Parkway Segment 2
- NWFBFI Airport
- Intermodal Development Center - Genesee and Wyoming RR
- Deer Point Lake /Econfina / NFWFMD Lands
- Community Cohesion / Socio-cultural Impacts
- US 231 PD&E
- CR 390 PD&E



West Bay Parkway



Gulf Coast Parkway



Purpose and Need

- **Primary Goals**

- Promote regional system linkage
 - SR 77 to US 231
 - West Bay Parkway to Gulf Coast Parkway
- Enhance mobility in the study area
- Improve overall traffic operations
- Safety

- **Secondary Objectives**

- Support economic development
- Emergency response/evacuation

Planning Components

- **Bay County TPO**

- Identified in LRTP and TIP
- No funding for next phase (PD&E)

- **FDOT Five-Year Work Program**

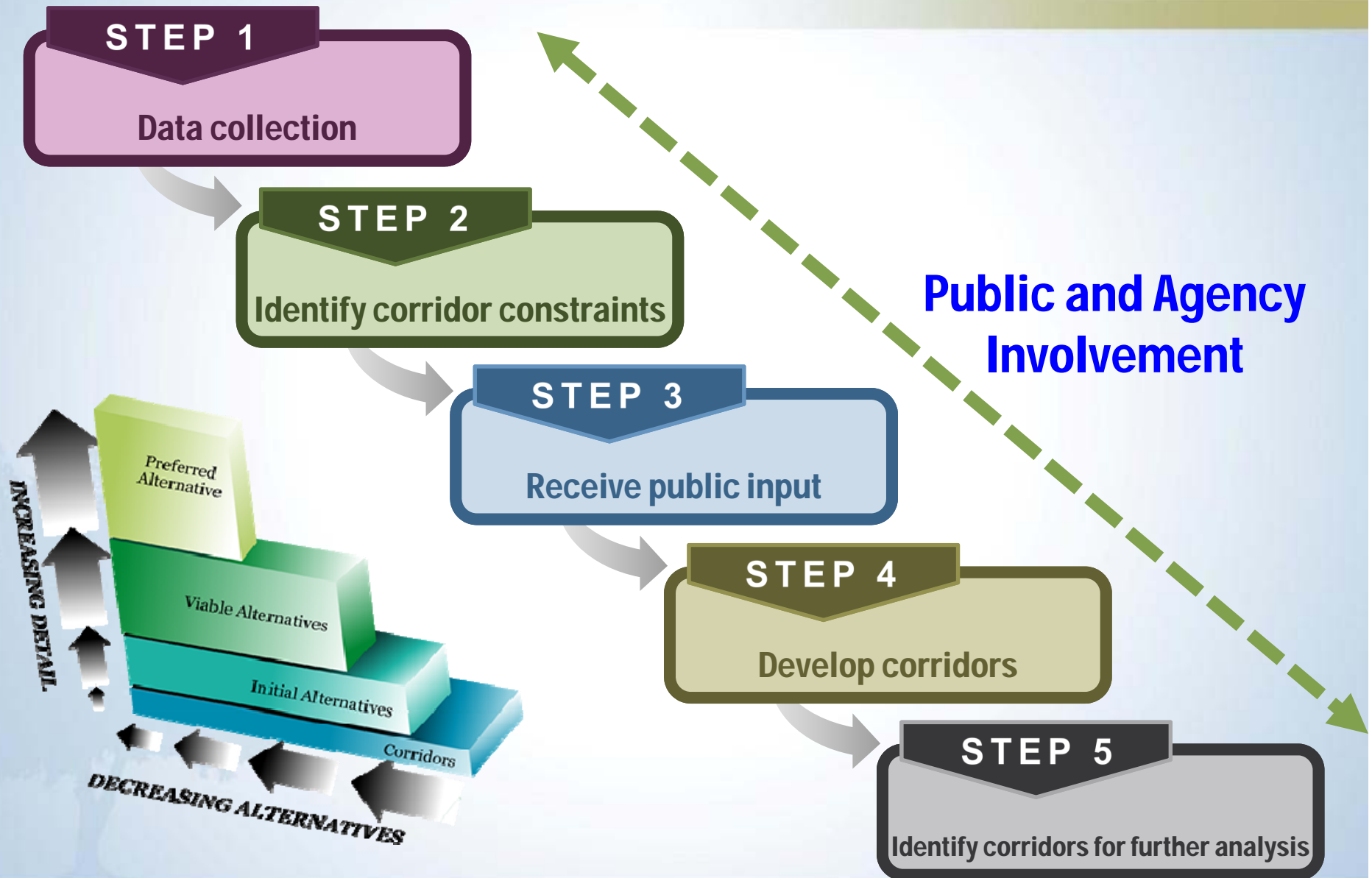
- Not currently funded for subsequent phases



Goals and Objectives

- Corridor Feasibility Study – Pre-PD&E/NEPA
- MAP-21 Planning and Environmental Linkage Considerations
- Eliminate Unreasonable Corridors
- Identify the Most Probable Corridor(s) to be further evaluated in a PD&E Study

Corridor Development



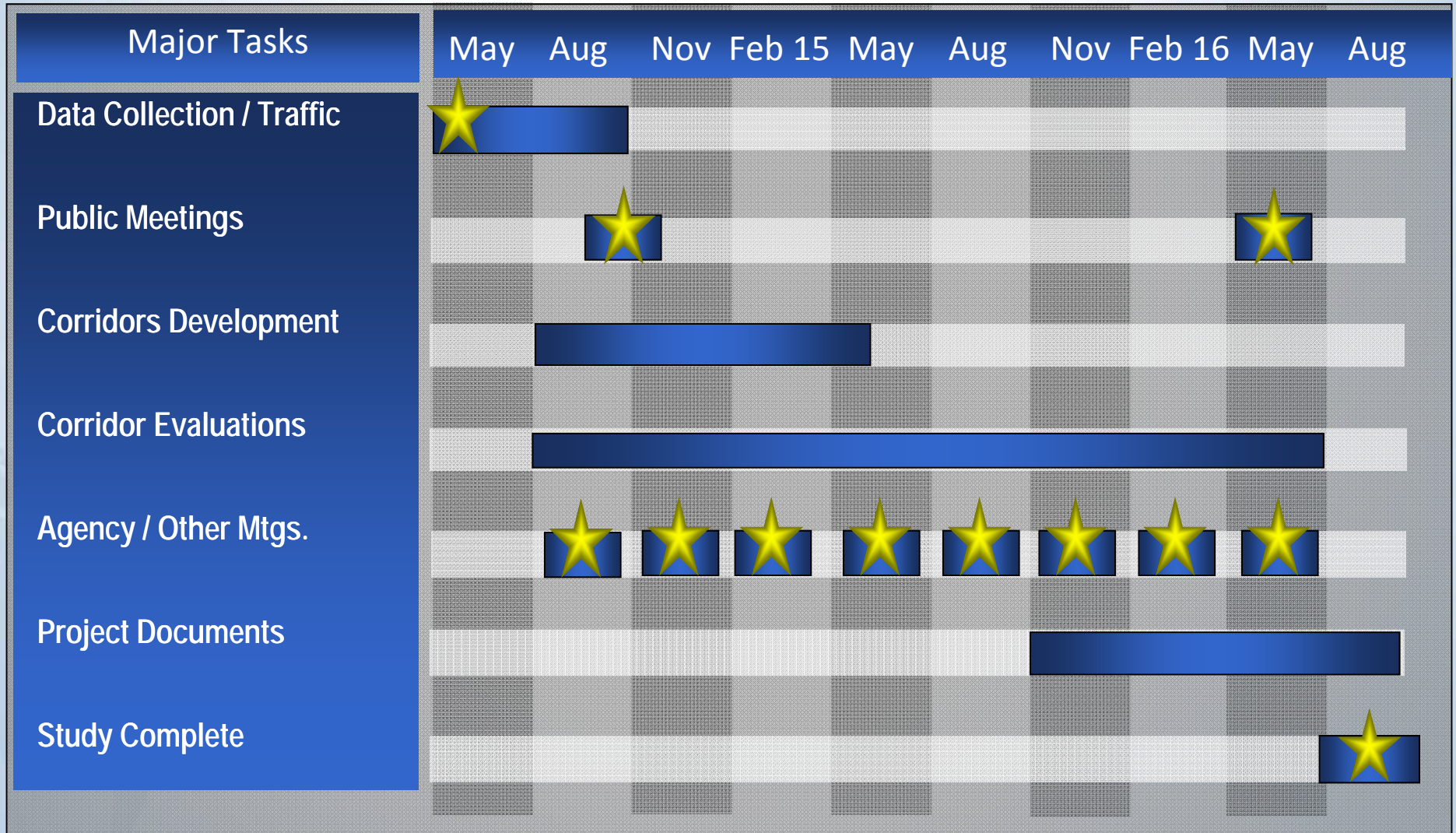
ETDM: MM / ACER Process

- **Corridors Eliminated**
 - Didn't meet Purpose and Need
- **Planning Screen**
- **Methodology Memorandum Developed**
 - 30 Day Review by ETAT
- **Alternative Corridor Evaluation Report**
 - Ongoing



Schedule

Initial 24 month schedule – likely to be extended due to uncertainty regarding Gulf Coast Parkway terminus



Public Involvement

- Two Public Meetings
- Small Group Meetings
- Agency Meetings
- Newsletter Updates
- Project Website
- Public Kick-Off Meeting
 - September 18, 2014
- Project Advisory Group Meeting
 - November 12, 2014

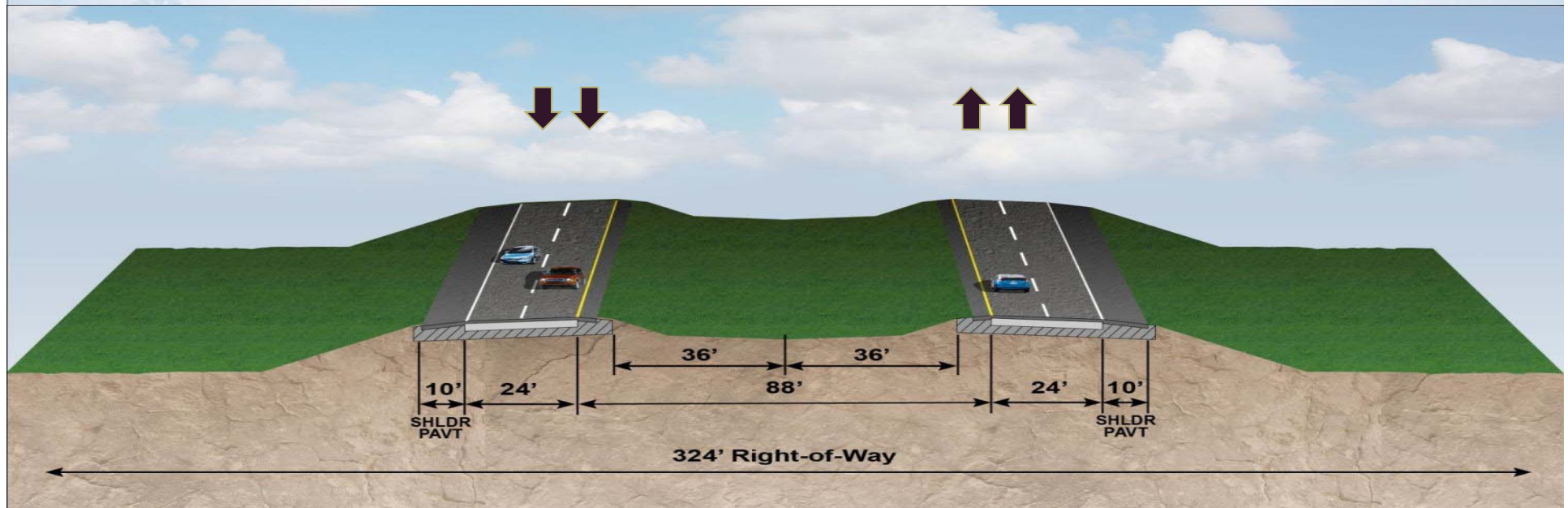


**US Army Corps
of Engineers®**



Engineering Considerations

- Corridor width 500 feet
- Facility Type
- Tolling Scenario
- Utilities
- G&W Railway
- Multi-modal Considerations
- Drainage
- Typical Sections Options
- Design Speed /Criteria
- Interchanges
- Access Management
- Structures

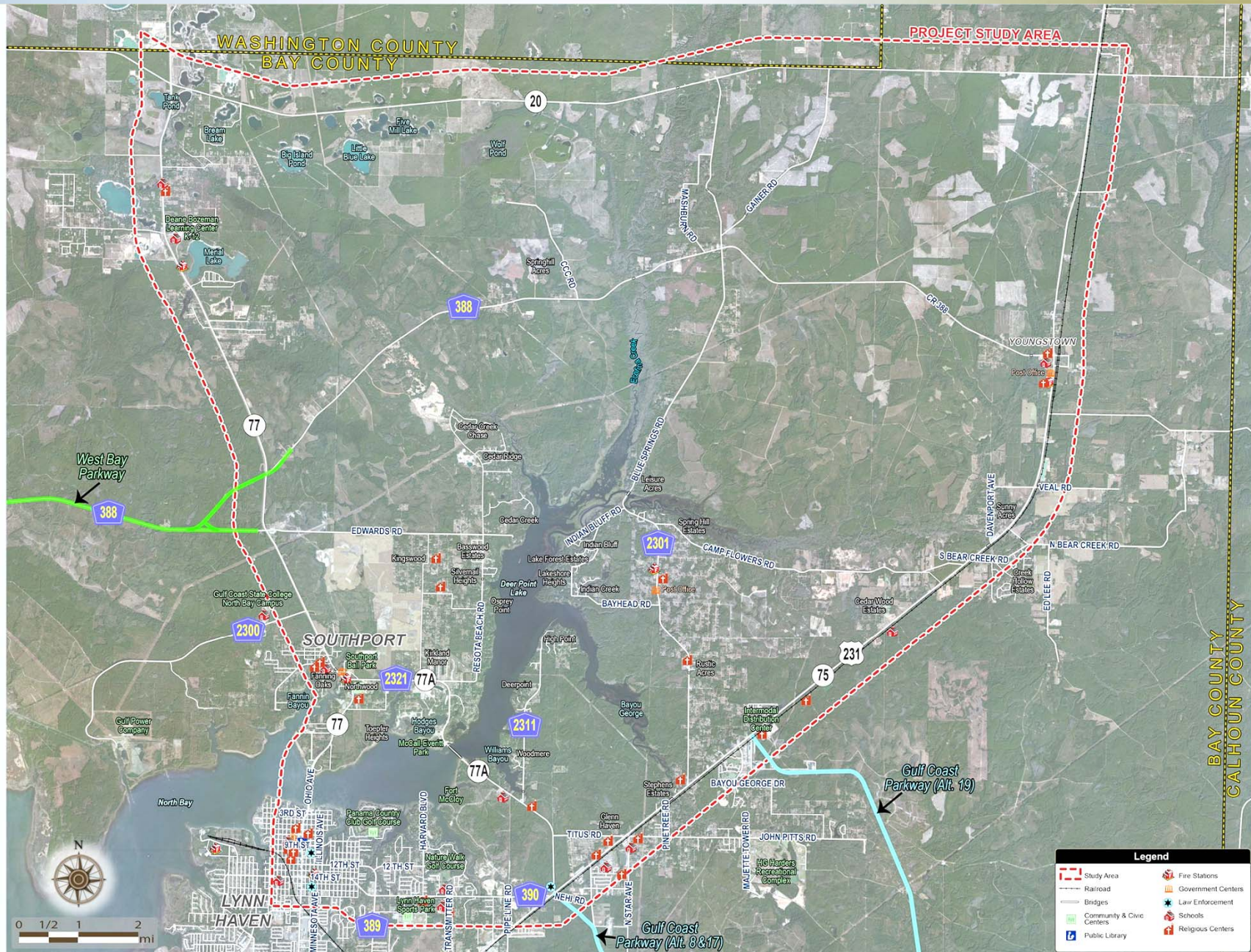


Social, Natural, Physical, Cultural Environmental Considerations

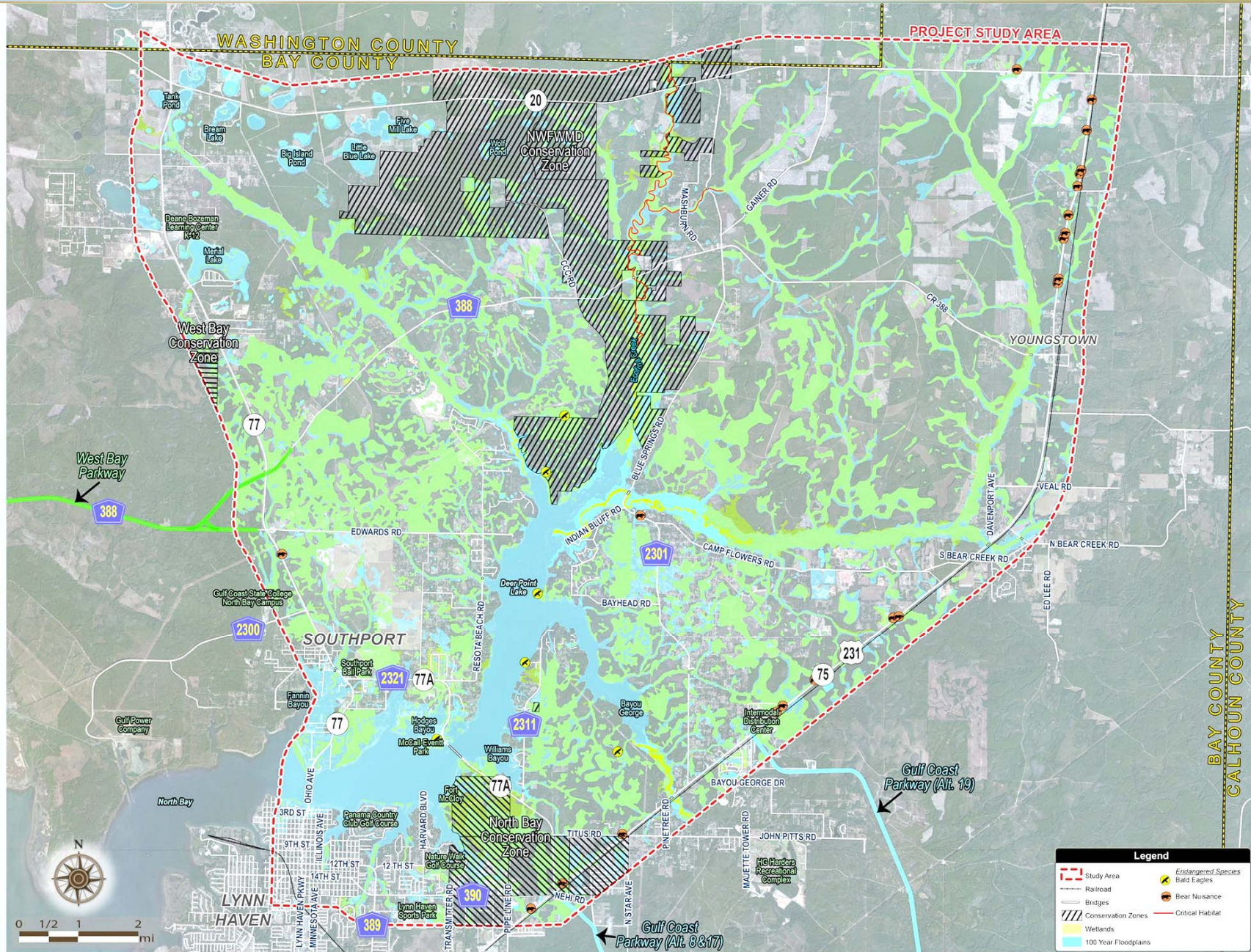
- Deer Point Lake
- Potential Residential Relocations
- Big Cedar Creek and Econfina Creek
- Potential Impacted Community Facilities
- Publicly Managed Lands
- NWFWMD Lands
- Community Cohesion
- Wetlands
- Kent Cemetery
- Flood Hazard Areas
- Lynn Haven Historic Sites
- Threatened and Endangered Species
- Noise
- Gulf Power Line
- ***Others to consider?***



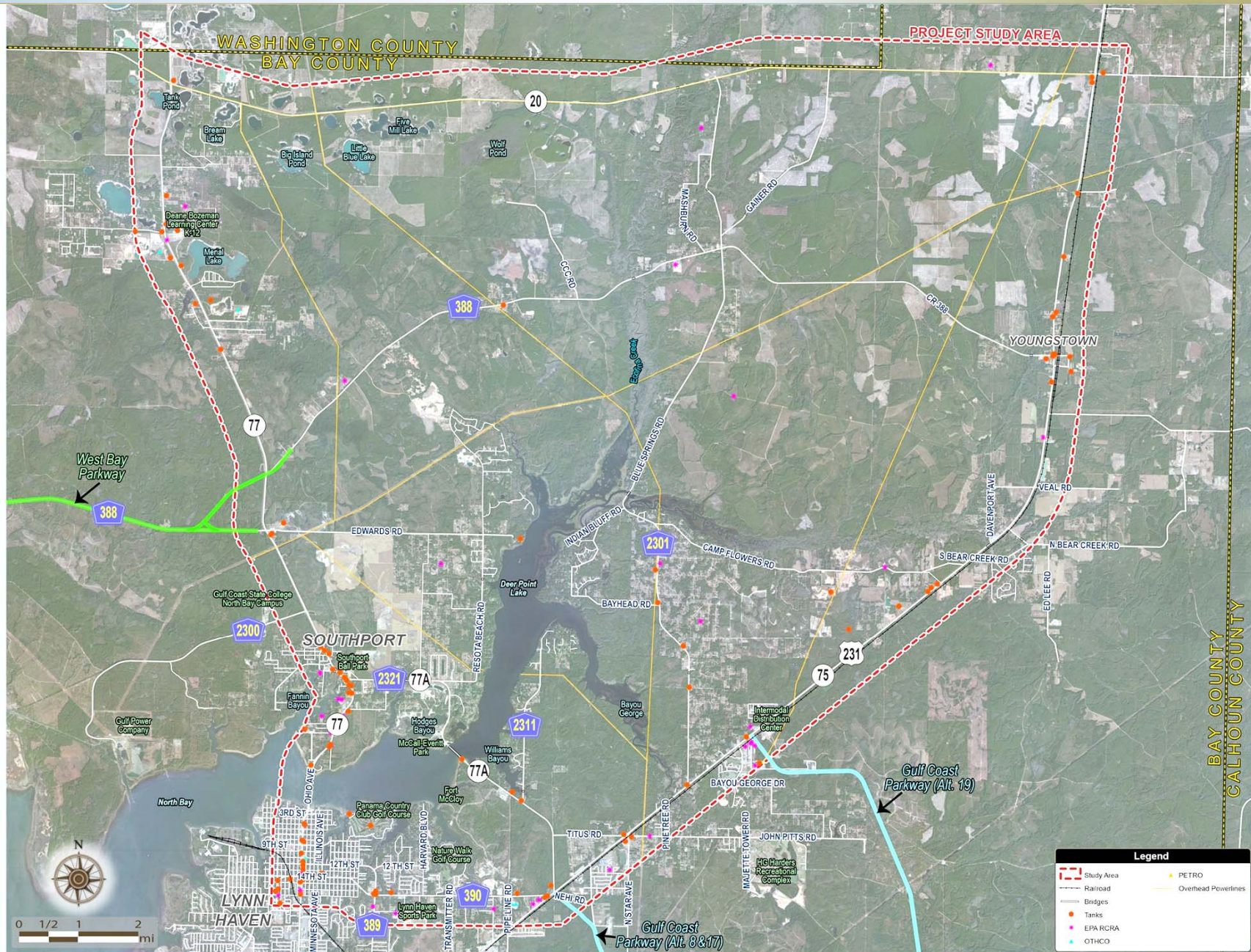
Social Environment



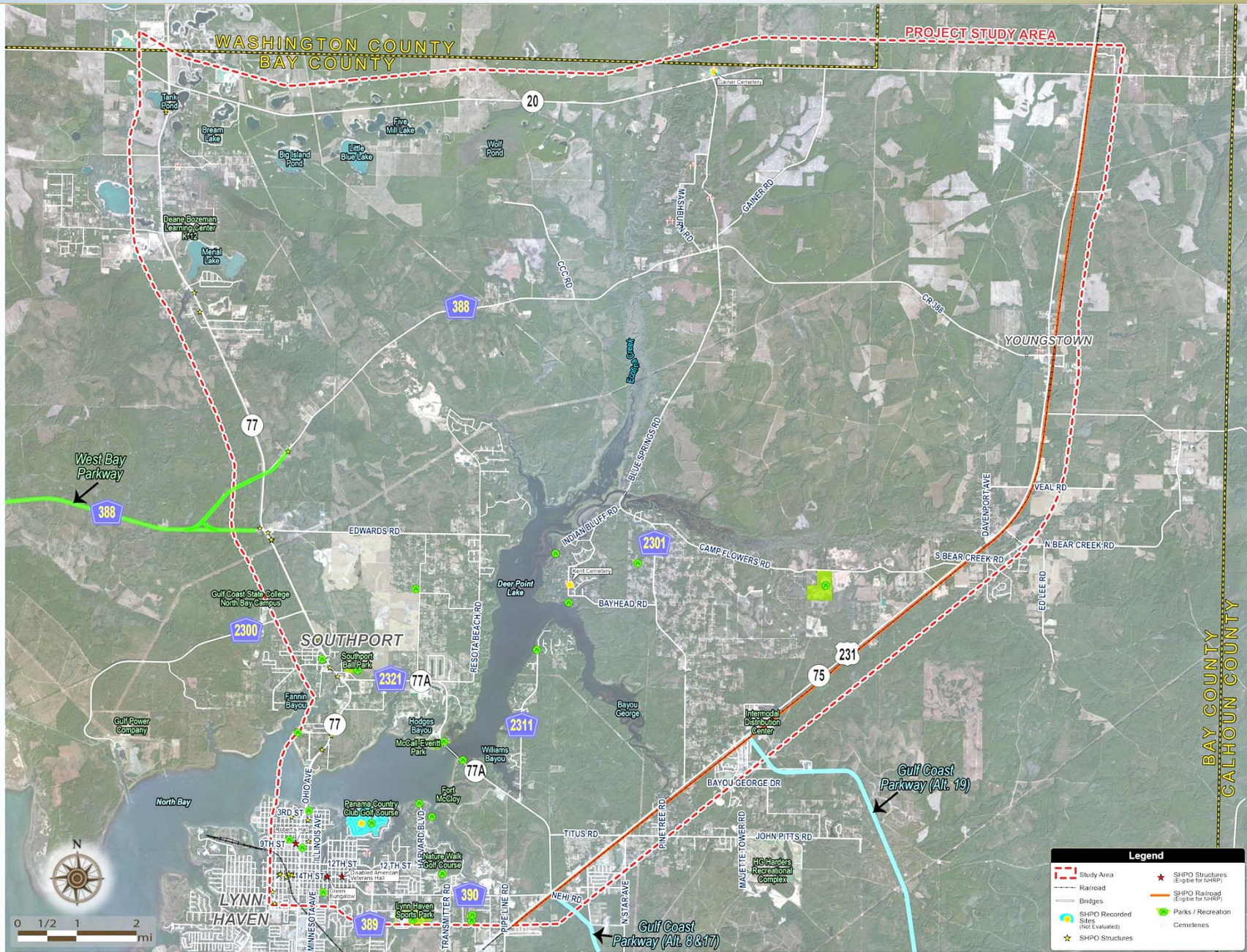
Natural Environment



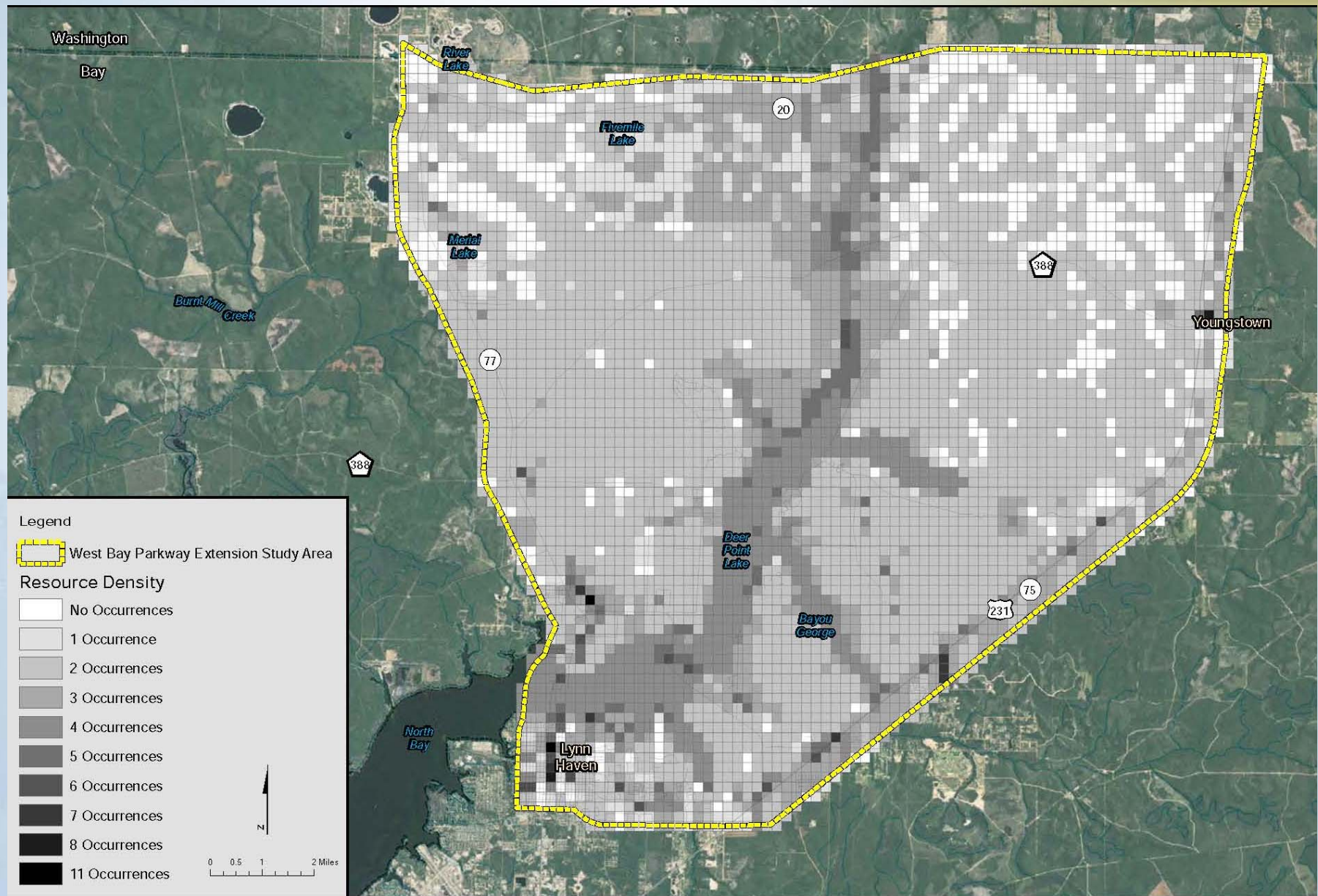
Physical Environment



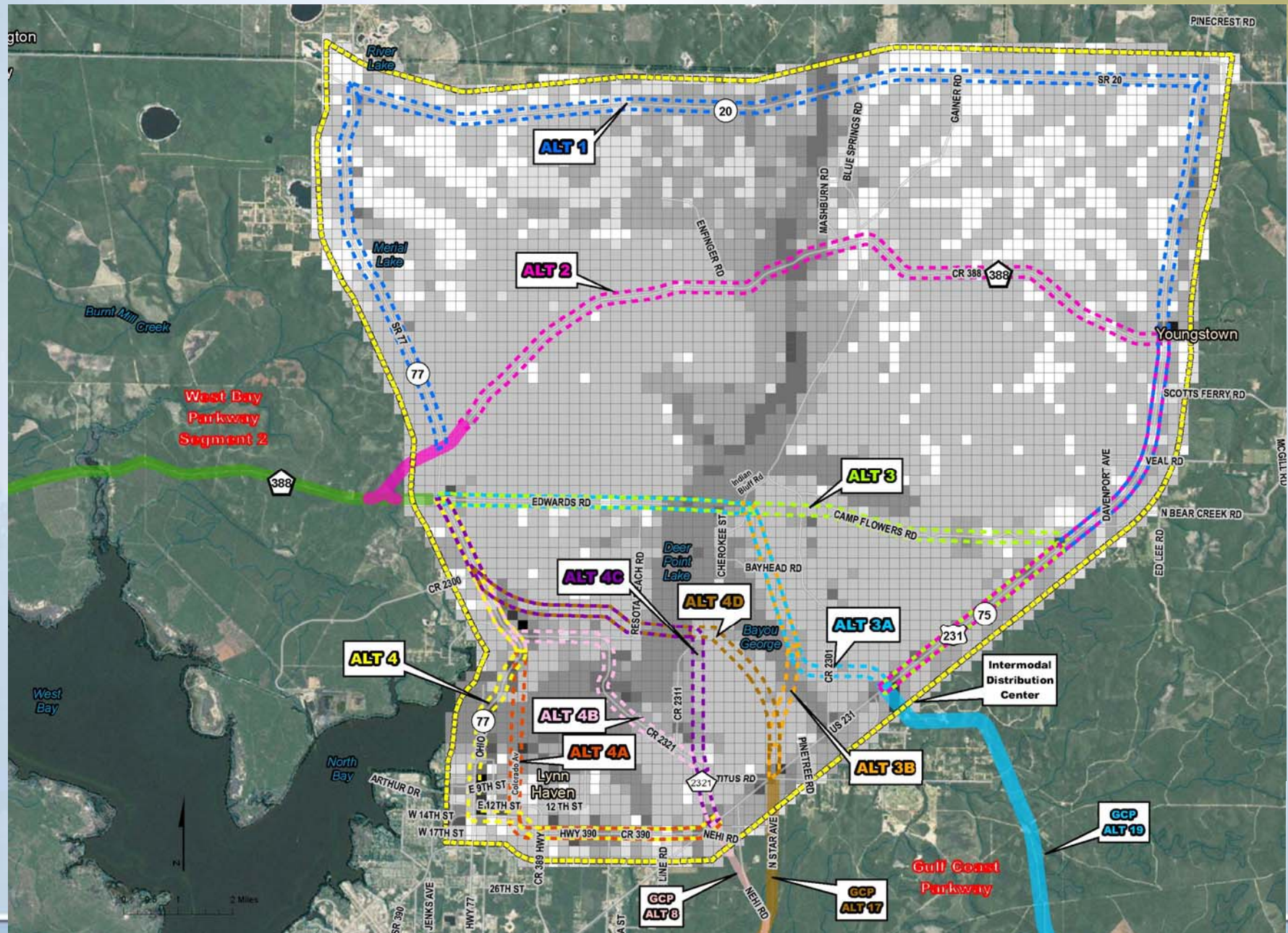
Cultural Environment



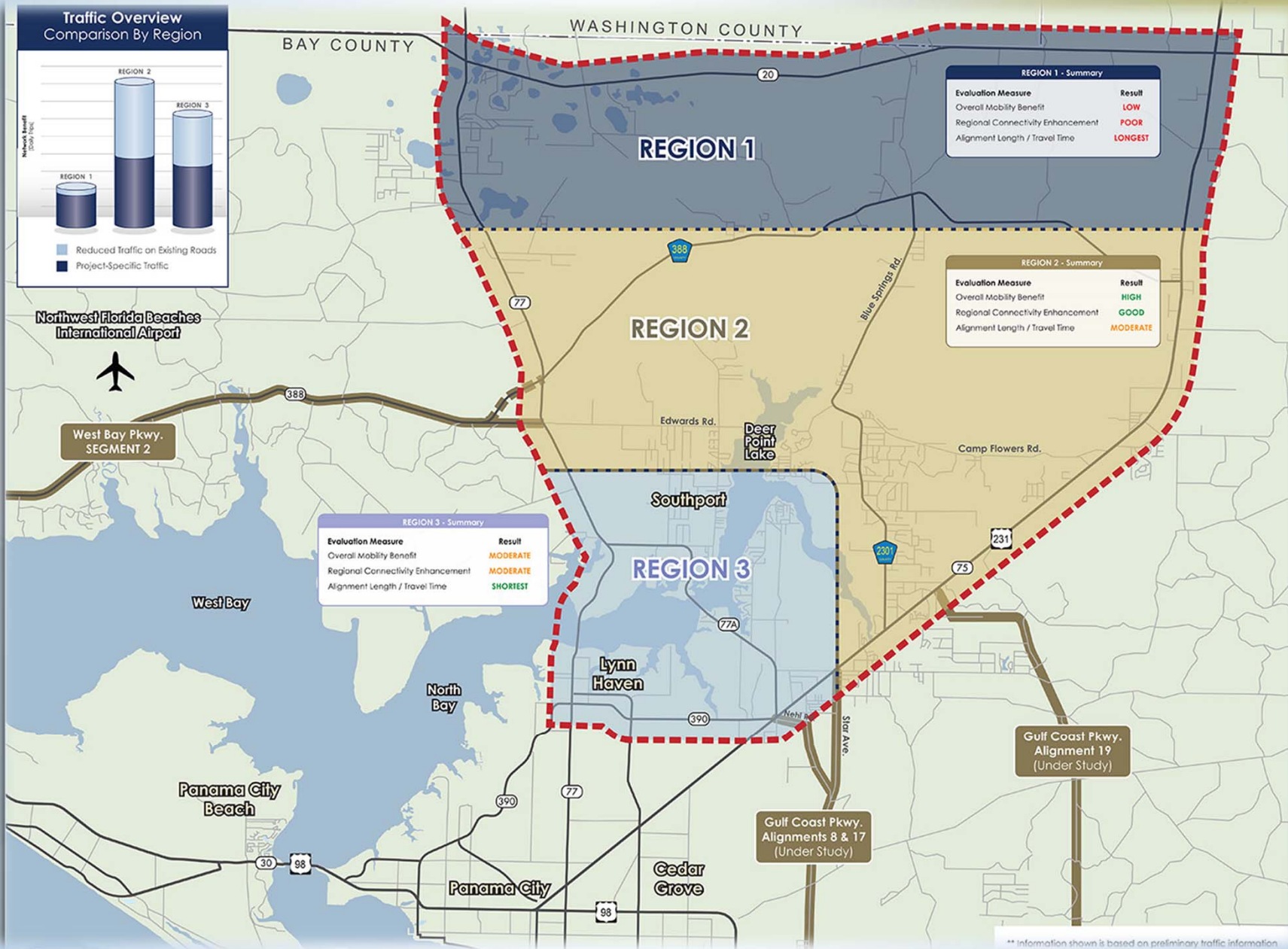
Initial Corridors-Land Suitability Mapping



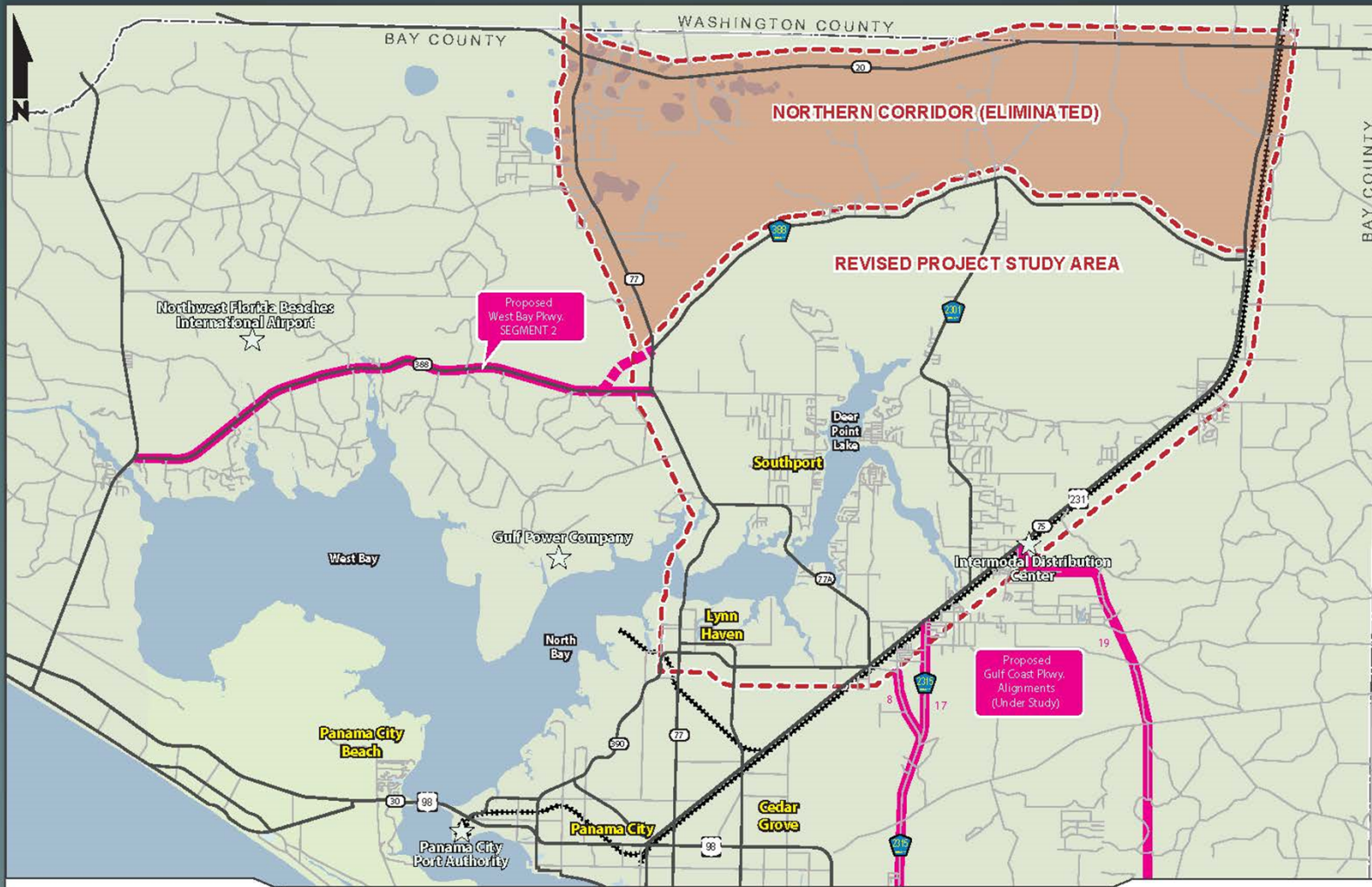
Initial Corridors



Travel Demand



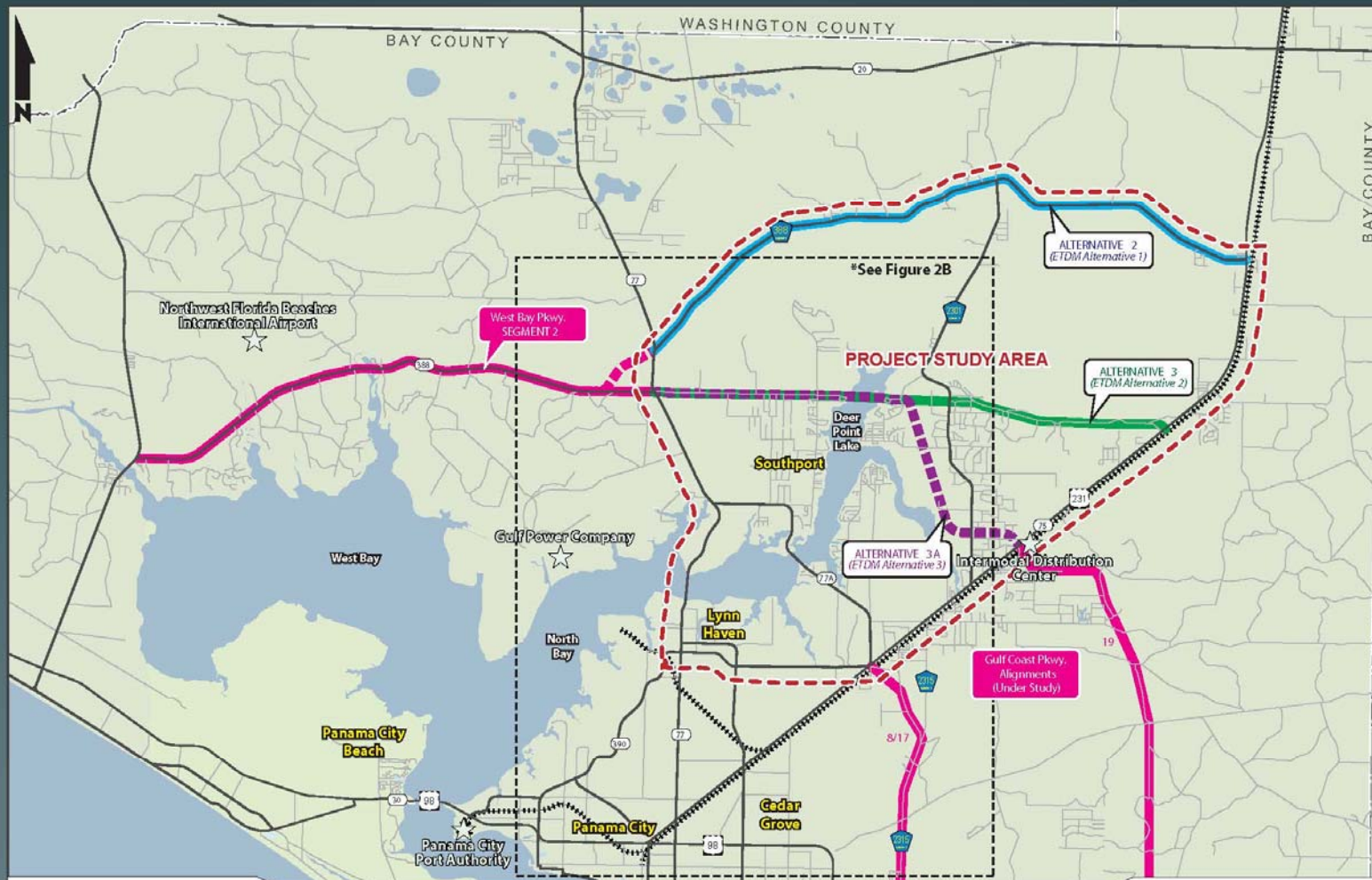
Northern Region Elimination



West Bay Parkway Extension

FIGURE 1
Project Study Area

Initial Corridors

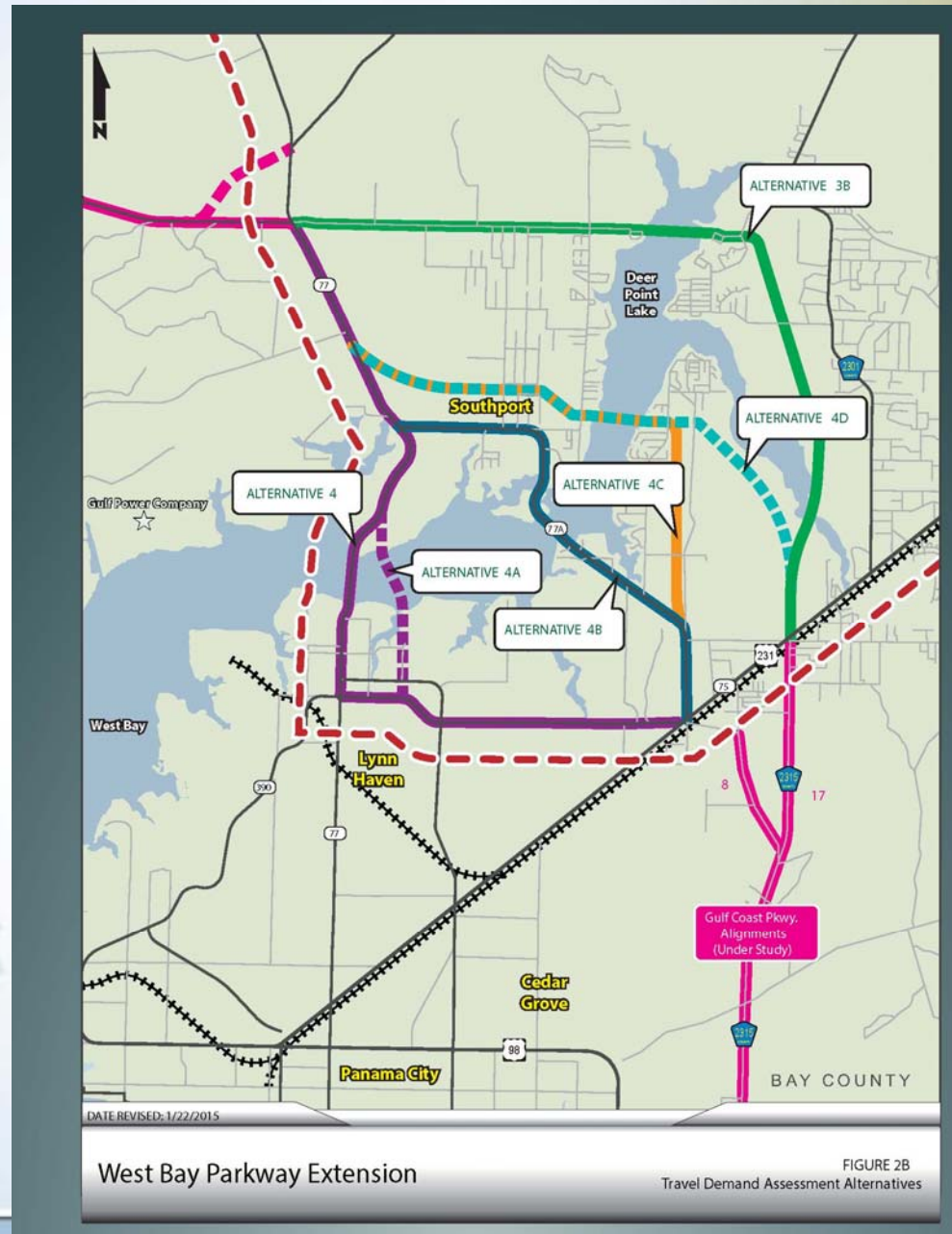


DATE REVISED: 8/25/2015

West Bay Parkway Extension

FIGURE 2A
Travel Demand Assessment Alternatives

Initial Corridors



Ongoing Activities / Next Steps

- **ETDM Planning Screen**

- Address ETAT Comments on Methodology Memorandum
- Alternative Corridor Evaluation Report (ACER)

- **Second PAG Meeting**

- Winter/Early Spring 2016

- **Second Public Meeting**

- Spring/Early Summer 2016

Questions / Comments



Project Team Contact Information

- **Alan Vann, FDOT Project Manager**
FDOT District 3
(850) 330-1523
Alan.Vann@dot.state.fl.us
- **Mark Callahan, Consultant Project Manager**
CH2M HILL
(407) 423-0030
Mark.Callahan@ch2m.com
- **Bryon Russell, Consultant Deputy Project Manager**
CH2M HILL
(904) 596-6528
Bryon.Russell@ch2m.com