

District 3 ETAT Meeting

SEMO Update

September 24, 2015

District 3 ETAT Meeting

FDOT

SWAT Process

**Marjorie Kirby
September 24, 2015**

SWAT Background

FDOT 2014 took close look at time and cost of preconstruction activities:

- Although PD&E phase least costly, absorbs greatest time
- FDOT set out to transform project delivery process for state funded projects to increase efficiency and savings
- Statewide Acceleration Transformation (SWAT)
- Project management approach benefits both state funded and FHWA funded projects

PD&E Work Program Instructions

- ◆ Decide State or FHWA Funded Project
- ◆ Considerations to remain FHWA funded:
 - On the interstate
 - Using or involving Interstate ROW (e.g., air rights, adjacent, etc.)
 - Facilities within and impacting federal lands such as National Parks or Forests, etc.
 - Transportation Alternatives (TA) program
 - Safety Program projects
 - Off-system projects

State Documents

- ◆ FDOT – State funded projects
 - Non-Major State Actions (NMSA)
(non-qualifying for ETDM)
 - State Environmental Impact Report (SEIR)
(qualifying for ETDM)

- ◆ Non-FDOT projects (local or privately funded action on State transportation facility)
 - Project Environmental Impact Report (PEIR) –
(qualifying ETDM projects optional)

State funded projects may require NEPA



- ◆ Federal permits/actions may be required
 - US Army Corps of Engineers
 - US Coast Guard
 - US Fish and Wildlife Service

Federal Permit

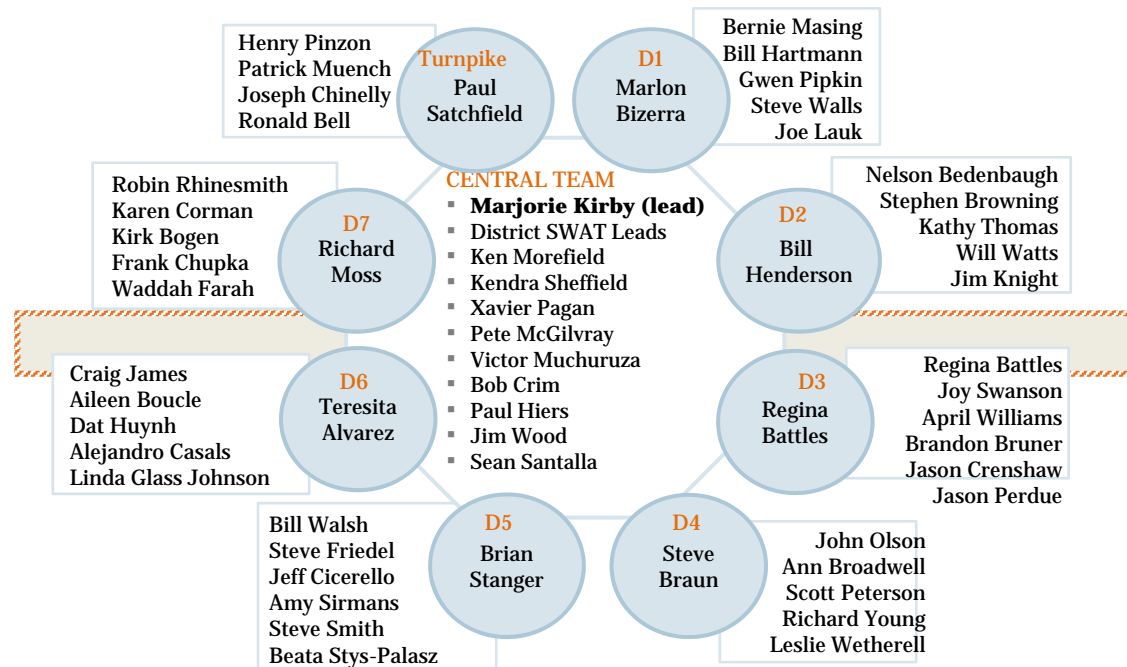
- ◆ If a federal permit/action is required:
 - Follow Section 106 of the National Historic Preservation Act to address historic or archaeological resources
 - Follow Section 7, ESA
- ◆ If no federal permit/action is required, but a state permit is:
 - Consult with the Florida Division of Historical Resources
 - Follow Section 10, ESA

What is SWAT?

- ◆ Statewide Acceleration Transformation (SWAT) - Project Management Approach
- ◆ SWAT Teams Established: Multi-disciplined and Experienced Practitioners
(MPO Liaison, Work Program, Management, Project Manager, DEMO, PLEMO, Design, others..)
- ◆ Realistic Scheduling and Project Management technique for **ALL** projects
- ◆ Consider and establish if project to advance with state funds only
- ◆ ETDM Screening during Planning: Early identification of relevant issues, use of available information from evaluations in planning and other sources
- ◆ Build Environmental Evaluation – Iterative yet Progressive
- ◆ Identify and conduct key analysis prior to PD&E study start to inform or streamline
- ◆ Customize PD&E Scopes of Services and project schedules
- ◆ Overlap design with PD&E – establish project management and contract approach
- ◆ Continual feedback - monitor success and share best practices

SWAT Team Purpose & Goals: The SWAT Team represents the best expertise of the agency, coming together to improve how FDOT operates

Current SWAT Team Organization Chart



District SWAT Teams: *Support the Projects*

- Hold SWAT planning and project kick-off meetings to focus the project scope and schedule
- Drive improvement through structured problem solving
- Push District innovations state-wide through Central SWAT
- Communicate process changes to PMs and Consultants

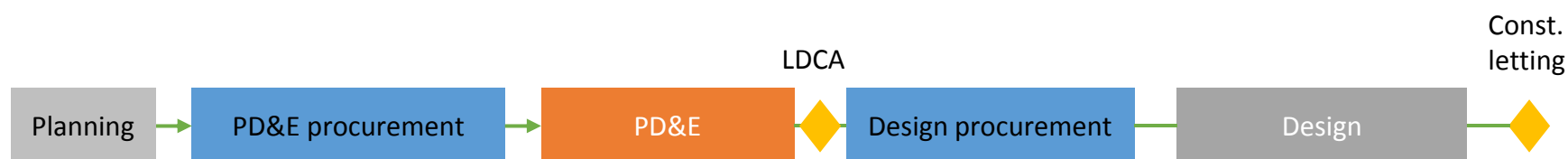
Central SWAT Team: *Support the Districts*

- Collect expertise and best practices across Districts
- Identify and deploy tools and programs to encourage continuous improvement
- Monitor progress of implementation
- Work with District SWATs to facilitate state-wide training

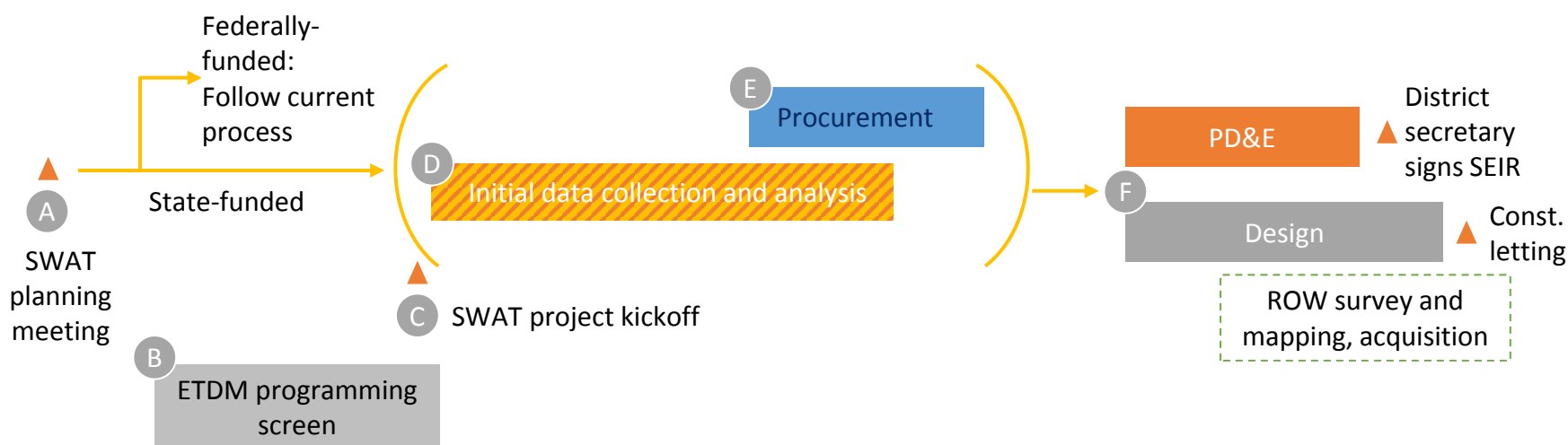
Improved state process expected to cut pre-construction time by 60-75%

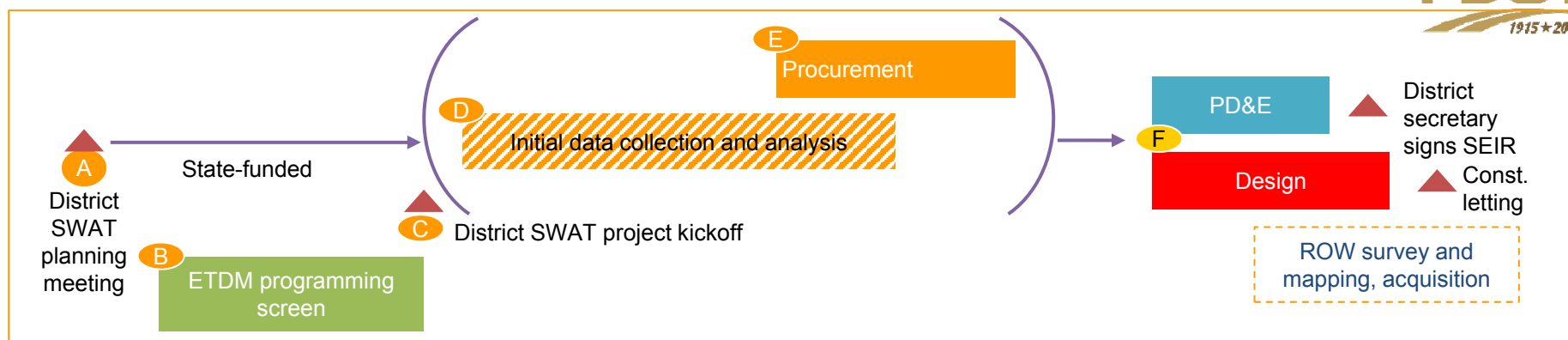
■ Planning ■ Procurement ■ PD&E activity ■ Design activity ■ Both PD&E and Design

Existing process: average duration of 94 months across all project types



New process : average duration of 28 months across all project types





	A	B	C	D	E	F
Step	<ul style="list-style-type: none"> District SWAT planning meeting 	<ul style="list-style-type: none"> ETDM Programming Screen 	<ul style="list-style-type: none"> District SWAT Project Kickoff 	<ul style="list-style-type: none"> Initial Data Collection & Analysis 	<ul style="list-style-type: none"> Procurement 	<ul style="list-style-type: none"> PD&E and Design
Timing	<ul style="list-style-type: none"> Late summer before each new gaming cycle 	<ul style="list-style-type: none"> Must be complete one year before PD&E funding is programmed in work program 	<ul style="list-style-type: none"> One year ahead of PD&E / Design funding date in work program 	<ul style="list-style-type: none"> Begins after project kick off 	<ul style="list-style-type: none"> 4-6 months 	<ul style="list-style-type: none"> 10-30 months <ul style="list-style-type: none"> – PD&E: 6-14 months – Design: 10-18 months
Participants	<ul style="list-style-type: none"> SWAT team ISD / Planning Work program EMO 	<ul style="list-style-type: none"> ETDM coordinator 	<ul style="list-style-type: none"> SWAT Team PD&E and Design PMs ISD / Planning 	<ul style="list-style-type: none"> PD&E and Design PMs 	<ul style="list-style-type: none"> PD&E and design PMs Procurement 	<ul style="list-style-type: none"> PD&E and Design PMs
Activities	<ul style="list-style-type: none"> Discuss all projects to be gamed in upcoming cycle Decide core elements of purpose and need Use ETDM planning screen if possible Decide State or Federal funded If state funded, decide NMSA vs. SEIR 	<ul style="list-style-type: none"> Communicate list of state projects to ETDM coordinator Check state or federal funding box Conduct ETDM programming screen FHWA will not comment on project 	<ul style="list-style-type: none"> Scoping Segmentation consideration High-level schedule Plan for tech panel Use ETDM programming screen to scope 	<ul style="list-style-type: none"> Environmental review Survey Geotech Traffic Long lead species surveys 	<ul style="list-style-type: none"> Concurrent and/or joint procurement 	<ul style="list-style-type: none"> Overlap of PD&E and Design activities, working to get quickly to the preferred alternative 60% of Design done by end of PD&E

What does this mean to an ETAT?

- ◆ Recognize if State or Federal lead project when screened
- ◆ Increased consistency of screening events during FDOT planning
- ◆ Screening activities unchanged – considering:
 - proposed activity
 - environmental setting
 - potential context and intensity of involvement (PED review)
 - internal agency collaboration
 - available data (EST and other)
 - identify further study or informational needs
 - identify path forward coordination needs
 - others..
- ◆ Remain a resource

- Questions?

USFWS Updates

- ◆ Liaisons in all three offices
 - Panama City
 - Jacksonville
 - Vero Beach
- ◆ New: one liaison dedicated to the development of Programmatic Agreements/approaches as well as training for FDOT
- ◆ New: one liaison dedicated to assist the other three with work load

Environmental Screening Tool – What's New

Presented by:

Dean Rogers

September 2015



EST Enhancements on Production

- ◆ Advance Notification (AN) Package Enhancements
- ◆ Document Review Tool Upgrade
- ◆ ETAT Review Wizard
- ◆ New & Improved hardcopy maps
- ◆ Enhanced ETAT Notifications
- ◆ Cultural Resources Data Report

Advance Notification (AN) Package Enhancements on production

- ◆ Underlying Structural Flexibility in place
 - AN after Programming Screen
 - AN without Programming Screen in PD&E

Advance Notification (AN) Package Projects Needing Review

Active project: #2805 J Turner Butler Blvd (SR 202) West

Map it

etdm

Environmental Screening Tool

Search site for...

Search

Saved Searches:

Project History:

Advanced Search

My ETDM

Bookmarks

Logout

Hide <<

Projects Needing Review

Review AN Package

X

Tools

Reports

Project Diary >

Advance Notification Package >

Project Effects >

Reminders >

Agency Participation >

Community Coordination >

Cumulative Effects >

Performance Management >

Invoicing Reports >

Project Dashboard >

Document Review >

Wizards

Maps

Account Settings

Help

Projects Needing Review

PDF

Print

Help

MY 2

Search Criteria

Key

Planning Screen (0)

Programming Screen (2)

AN (1)

ACE (1)

Federal Consistency Determination (5)

Document Reviews (0)

FDOT District	County	ETDM#	Project Name	ETDM Phase	Days Left	Last Day	Start day	Review Authority	AN Review	EC Review
District 3	Leon	10114	Eliminated Alt Demo #2	Project Development	-29	08/24/2015	07/10/2015	Yes	No	N/A

Click to Open Map

This Site is maintained by the Florida Department of Transportation Environmental Management Office. For additional information, please e-mail questions or comments to help@fla-etdm.org or call 850-414-5334.

Advance Notification (AN) Package

Please click on the link below to view the Advance Notification package for the following transportation improvement project. This notice is forwarded for your review in accordance with Presidential Executive Order E12372.

ETDM #: 10114
PROJECT NAME: Eliminated Alt Demo #2
FINANCIAL #: Not assigned at this time
FEDERAL INVOLVEMENT: No Federal Involvement
ACE PROJECT: N
ALTERNATIVES: 1, 2
MODES: Roadway, Bikeway, Pedestrian
SIS: N
DISTRICT: 3
COUNTY: Leon
PLANNING ORGANIZATION: FDOT District 3
SCREEN: Project Development
ETDM COORDINATOR: Test Coordinator
(850) 444-5555
test.coordiantor@dot.state.fl.us
PROJECT MANAGER: None assigned at this time
LEAD AGENCY: FDOT (proposed)
CLASS OF ACTION (COA): Not determined at this time

The review period starts today Friday, 7/10/2015, and will end in 45 days, on Monday, 8/24/2015.

The following Water Management District(s) should review this project:

NORTHWEST FLORIDA WATER MANAGEMENT DISTRICT

The following agencies have been identified as potentially exempted from this project screening event. These agencies should participate in the review at their own discretion.

Federal Highway Administration, Federal Transit Administration

We request that you review the information in the Advance Notification package and furnish us with whatever comments are pertinent at this time. Please provide your comments on the Environmental Screening Tool at:

<https://stage-d.fl.a-etat.org/est/?openPage=/est/an/EditComment.do&PID=10114>

If you have any technical questions, need assistance, or require additional training with the EST contact the ETDM Help Desk at 850-414-5334 or help@fla-etat.org.

If you have any project-specific questions contact Test Coordinator at (850) 444-5555 or test.coordiantor@dot.state.fl.us

We look forward to receiving your comments.

AN after Programming Screen (Review AN Package)

Active project: #10114 Eliminated Alt Demo #2

Map it

etdm

ETDM Environmental Screening Tool
https://www.flta-etdm.org/etdm/

Search site for...

Search

Saved Searches

Project History

Advanced Search

My ETDM

Bookmarks

Logout

Tools

Review Project >

Coordinate ETAT >

Performance Management >

Agency Invoices >

Project Dashboard >

Document Review >

Perform ETAT Review

Review AN Package

Review AN Package

#10114 Eliminated Alt Demo #2

District: District 3 Phase: Project Development Contact Information: Kenny Kwan (850) 123-4567 kenny.kwan@aec.com

View Advance Notification Package

Open the advance notification package using the link below.

[Advance Notification Package published 6/23/2015 \(PDF\)](#)

*Enter Comments

Provide comments on the Advance Notification in the box below. The comments apply to the current review screen, which started on 7/10/2015 and has been extended until 9/25/2015

B I U

The comments provided here may include:

- General comments on the Advance Notification
- Comments on consistency with the Strategic Regional Policy Plan
- Comments on consistency with the Local Government Comprehensive Plan

Sign and Submit

Reviews submitted here will be considered part of your agency's comments on the Advance Notification Package for this project.

User Identity: Lauren P. Milligan @ FL Department of Environmental Protection

Submit


Cancel

* A comment is required

This Site is maintained by the Florida Department of Transportation Environmental Management Office. For additional information, please e-mail questions or comments to help@fla-etdm.org or call 850-414-8334.

Document Review Tool

Active project: Map it



Search

Saved Searches: Project History:

[Advanced Search](#) | [My ETDM](#) | [Bookmarks](#) | [Logout](#)

Hide <<

Home

Tools

[Review Project >](#)
[Performance Management >](#)
[Agency Invoices >](#)
[Project Dashboard >](#)
[Document Review >](#)

Home

What's New

Date	News
09/11/2015	The following training webinars have been scheduled to demonstrate the new Document Review Tool in the EST. If you have questions about... [+]
08/17/2015	The following new or updated GIS layers have been added to the EST: Corresponding EST maps, hardcopy maps, analyses and... [+]
08/17/2015	The following new or updated GIS layers have been added to the EST: Corresponding EST maps, hardcopy maps, analyses and... [+]

[View Complete What's New Report](#)

Quick Links

Search by the name of a tool or report to add to your list of quick links.

EST / ETDM Help:

[Finding Your Way Around](#) ×
[Training](#) ×
[User Handbook](#) ×
[EST Tip Sheets](#) ×
[Site Map](#) ×
[Contact Us](#) ×

[Agency Review Report](#) ×
[Projects Needing Review](#) ×

[Print Hard Copy Maps](#) ×

Manage Your Account:

[Update Contact Information](#) ×
[Customize Map Viewer](#) ×
[Manage Contact Lists](#) ×

Work on Invoices:

[Log Agency Activity](#) ×
[Upload Agency Activity Spreadsheet](#) ×

Reports ▼

Wizards ▼

Maps ▼

Account Settings ▼

Help ▼

This Site is maintained by the Florida Department of Transportation Environmental Management Office. For additional information, please e-mail questions or comments to help@fla-etdm.org or call 850-414-5334.

Document Review Tool



est_update@fla-etat.org

Notice: Document Review has begun for I-275 from north of MLK Jr. Blvd. (SR 574) to north of Bearss Ave. (SR 678/CR 582)

To lourdes_mena@fws.gov; David.Rydene@noaa.gov; scott.sanders@myfwc.com

Cc [Bogen, Kirk](#); cathy.kendall@dot.gov; [Rhinesmith, Robin](#); [Selly, Nicole](#)

A Document Review event has begun on the Environmental Screening Tool (EST).

EVENT DETAILS:

Event Name I-275 from north of MLK Jr. Blvd. (SR 574) to north of Bearss Ave. (SR 678/CR 582)
Event Description Agency Coordination and Wetlands Evaluation and Biological Assessment Report Review
Restricted N
Related Document Review Event(s) None
Related ETD Project(s) [I-275 from north of MLK Jr. Blvd. to north of Bearss Ave.](#)

The review period starts today, Wednesday, 9/16/2015 and will end in 30 calendar days on Friday, 10/16/2015.

Click the link below to access the document review form:

<https://www.fla-etat.org/est/documentReview/DocReviewTool.do?eventId=381>

INSTRUCTIONS FOR REVIEWING AND PROVIDING COMMENTS ON DOCUMENTS:

The link above will take you to an online document review tool which will provide you access to the specific documents and a tool which will capture your comments for consideration. You can provide comments specific to a certain sentence, paragraph or section of the document. Some of the documents have numbered lines which you can use for specifying a location in the document for the comment. Here is a link that shows you how to use the comment form:

<https://www.fla-etat.org/est/servlet/blobViewer?blobID=9033>

Additionally, we have a fully staffed Help Desk capable of answering questions regarding the access and use of the document review tool. Email: help@fla-etat.org and phone: 850-414-5334.

Thank you,

Document Review Tool

Review

Submit Review

Submit Documents

*Required fields are marked with an asterisk

Document: FDOT 5 Fish ▼

*Location: Section(s) Page(s) Paragraph(s) Global ☐

* Location
Comments:

B
I
U

Save Review

Cancel

- * Location comment is required.
- * Sections, Pages, and Paragraphs are required when comments are not global.

Document Reviews

FDOT 5 Fish

Official Reviews

	Section(s)	Page(s)	Paragraph(s)	Global	Reviewing Organization	Comments
 	A	1-2	2	No	FL Fish and Wildlife Conservation Commission	Test. Section comment.
 				Yes	FL Fish and Wildlife Conservation Commission	Global comment. Again.

Document Review Tool



Identity


Review this document as Tester FFWCC @ FL Fish and Wildlife Conservation Commission

Review

Submit Review

Submit Documents

	Document (PDF)	Size	Description
<div><div></div><div>This is a test</div></div>	175.46 KB	This is the description .	

 Add Document

Document Review Tool

Event Details

Event: FDOT 3 - Fish and Wildlife Review

Start Date: 08/18/2015

End Date: 09/17/2015

Description:

Lorem ipsum dolor sit amet, consectetur adipiscing elit. Aenean leo libero, pulvinar ac mauris et, porttitor porta risus. Curabitur euismod urna a dui gravida mollis. Vestibulum vitae sapien tellus. Morbi sagittis felis non lacus egestas fermentum. Vestibulum non urna vel dolor tincidunt pharetra in volutpat eros. Nulla facilisis consequat nisi eget vulputate. Ut cursus, lacus in consequat vestibulum, odio sapien laoreet est, et commodo lacus metus at magna. Morbi egestas sagittis enim, non tincidunt augue pellentesque eget. Donec congue congue arcu vel fringilla.

Related Document Review Event(s): There are no other Document Review events related to this event.

Related ETDM Project(s): There are no ETDM projects related to this event.

Event Documents

Document (PDF)	Size	Document Type	Line Numbers Available	Description
Wildlife and Habitat Review	81 KB	Wildlife and Habitat Report	Yes	Lorem ipsum dolor sit amet, consectetur adipiscing elit.

Document Reviews

☐ Show staff comments for FL Fish and Wildlife Conservation Commission.


Wildlife and Habitat Review

Official Reviews

Start Line	End Line	Global	Reviewing Organization	Comments	Response	Responding Organization
1	10	No	FL Fish and Wildlife Conservation Commission	Nunc ornare, lorem at blandit vehicula, orci erat suscipit eros, non aliquet ante neque ac leo. Quisque eu dapibus ante.		
15	25	No	FL Fish and Wildlife Conservation Commission	Lorem ipsum dolor sit amet, consectetur adipiscing elit. Curabitur elementum, nibh id feugiat molestie, odio mauris accumsan quam, ac facilisis ante urna a felis.		

ETAT Review Wizard

Active project: #14202 SR 10 (US 90) from Soenic Highway to Se... [Map it](#)



Environmental Screening Tool

[Search](#)

Saved Searches: [▼](#)
Project History: [▼](#)

2 [Alert](#)
[Advanced Search](#)
[My ETDM](#)
[Bookmarks](#)
[Logout](#)

Hide <<

AOI Tools ▼

Financial Office ▼

Tools ▼

Reports ▼

Wizards ▲

Perform ETAT Review

Create ETDM Project

Generate Summary Report

Update ETDM Project

Set Up User Preferences

Draft ETAT Notification

Prepare Invoice

Maps ▼

Account Settings ▼

Administration ▼

Help ▼

Perform ETAT Review

Please select a project to review from the Projects Needing Review tab below by clicking on the ETDM#.

Projects Needing Review

Search Criteria

County: -All-

☒ **Assigned Organization(s):** FDOT District 3

☐ Show results for all members of selected organization
☒ Show results for Dean Rogers only

☐ **Other Organizations:** Advisory Council on Historic Preservation

[Select Criteria for Projects Needing Review](#)

[Search](#)

[Agencies and Associated Resource Issues](#)


Key

Planning Screen (1)		Programming Screen (9)		AN (0)		ACE (0)		Document Reviews (0)					
FDOT District	County	ETDM#	ALT#	Project Name	ETDM Phase	Days Left	Last Day	Start day	Review Authority	P&M Review	Issue Reviews	EC Review	Review Progress
District 3	Okaloosa	14209 **	1	SR 30 (US 98) from Santa Rosa CL to SR 393	Programming	16	10/08/2015	08/24/2015	Yes	No	0%	No	✗
District 3	Santa Rosa	14210 **	1	SR 30 (US 98) from Portside Drive to Okaloosa CL	Programming	20	10/12/2015	08/28/2015	Yes	No	0%	No	✗
District 3	Escambia	14059 **	1	Escambia Beltway from US 90A (SR10/ W. Nine Mile Road) to US 29 (SR 95)	Programming	39	11/02/2015	09/18/2015	Yes	No	0%	No	✗

This Site is maintained by the Florida Department of Transportation Environmental Management Office. For additional information, please e-mail questions or comments to help@fla-etat.org or call 850-414-6334.

ETAT Review Wizard

Active project: #14209 SR 30 (US 98) from Santa Rosa CL to SR 393 Map it



Environmental Screening Tool

Search site for... Search

Saved Searches: Project History:

Alert Advanced Search My ETDM Bookmarks Logout

AOI Tools

Financial Office

Tools

Reports

Wizards

Perform ETAT Review

Create ETDM Project

Generate Summary Report

Update ETDM Project

Set Up User Preferences

Draft ETAT Notification

Prepare Invoice

Maps

Account Settings

Administration

Help

Hide << **Perform ETAT Review**

Perform ETAT Review

#14209 SR 30 (US 98) from Santa Rosa CL to SR 393

District: District 3 Phase: Programming Screen Contact Information: Peggy Kelley (850) 330-1517 peggy.kelley@dot.state.fl.us

1. Choose a Project to Review
2. View Project Description
3. Review Purpose and Need
4. Review Project Effects
5. Review Cumulative Effects

Projects Needing Review View Project Description Review Purpose and Need Review Project Effects Review Cumulative Effects

Search Criteria

Key


Planning Screen (1)		Programming Screen (9)		AN (0)		ACE (0)		Document Reviews (0)					
FDOT District	County	ETDM#	ALT#	Project Name	ETDM Phase	Days Left	Last Day	Start day	Review Authority	P&M Review	Issue Reviews	FC Review	Review Progress
District 3	Okaloosa	14209 **	1	SR 30 (US 98) from Santa Rosa CL to SR 393	Programming	16	10/08/2015	08/24/2015	Yes	No	0%	No	✗
District 3	Santa Rosa	14210 **	1	SR 30 (US 98) from Portside Drive to Okaloosa CL	Programming	20	10/12/2015	08/28/2015	Yes	No	0%	No	✗
District 3	Escambia	14059 **	1	Escambia Beltway from US 90A (SR10/ W. Nine Mile Road) to US 29 (SR 95)	Programming	39	11/02/2015	09/18/2015	Yes	No	0%	No	✗
District 3	Escambia	14059 **	2	Escambia Beltway from US 90A (SR10/ W. Nine Mile Road) to US 29 (SR 95)	Programming	39	11/02/2015	09/18/2015	Yes	No	0%	No	✗
District 3	Escambia	14059 **	3	Escambia Beltway from US 90A (SR10/ W. Nine Mile Road) to US 29 (SR 95)	Programming	39	11/02/2015	09/18/2015	Yes	No	0%	No	✗
District 3	Escambia	14059 **	4	Escambia Beltway from US 90A (SR10/ W. Nine Mile Road) to US 29 (SR 95)	Programming	39	11/02/2015	09/18/2015	Yes	No	0%	No	✗

Next >

This Site is maintained by the Florida Department of Transportation Environmental Management Office. For additional information, please e-mail questions or comments to help@fla-etat.org or call 850-414-5334.

ETAT Review Wizard

Active project: #14209 SR 30 (US 98) from Santa Rosa CL to SR Map it



Environmental Screening Tool

Search site for... Search

Saved Searches: Project History:

Alert Advanced Search My ETDM Bookmarks Logout

Hide <<

AOI Tools

Financial Office

Tools

Reports

Wizards

Perform ETAT Review

Create ETDM Project

Generate Summary Report

Update ETDM Project

Set Up User Preferences

Draft ETAT Notification

Prepare Invoice

Maps

Account Settings

Administration

Help

Perform ETAT Review

Perform ETAT Review

#14209 SR 30 (US 98) from Santa Rosa CL to SR 393

District: District 3 Phase: Programming Screen Contact Information: Peggy Kelley (850) 330-1517 peggy.kelley@dot.state.fl.us

1. Choose a Project to Review
2. View Project Description
3. Review Purpose and Need
4. Review Project Effects
5. Review Cumulative Effects

Projects Needing Review
View Project Description
Review Purpose and Need
Review Project Effects
Review Cumulative Effects

Project Description

This project will study the widening of SR 30 / US 98 from the Santa Rosa County Line to SR 393 / Mary Esther Boulevard, a distance of approximately 8.6 miles, from four to six lanes. The corridor traverses through unincorporated Okaloosa County, the City of Mary Esther, and the City of Fort Walton Beach. Portions of this project have funding allocated in the Cost Feasible Plan of the 2035 Okaloosa-Walton Transportation Planning Organization (TPO) Long Range Transportation Plan (L RTP), as discussed in the Plan Consistency section.

This project along with ETDM #14210 (SR 30 from Portside Drive to Okaloosa County Line) will be screened separately in the EST, but will be evaluated under the same PD&E study and environmental document. They are separate projects in the EST because there are separate Financial Project ID numbers due to them being in different counties.

Summary of Public Comments

Summary of Public Comments is not available at this time.

Justification

None at this time. A Public Involvement Plan will be created and carried out for this project. The PD&E study will include a Public Hearing.

Project Documents

Date	Type	Size	Document	Description
08/21/2015	Ancillary Project Documentation	10 KB	Purpose and Need Statement Traffic and Crash Data Tables	Purpose and Need Statement Traffic and Crash Data Tables
08/21/2015	Form SF-424: Application for Federal Assistance	24 KB	Form SF-424: Application for Federal Assistance	Form SF-424: Application for Federal Assistance
08/21/2015	Ancillary Project Documentation	61 KB	L RTP Pages	L RTP Pages
08/21/2015	Hardcopy Map (from Attach Document Tool)	319 KB	SR 30 Project Location Map	SR 30 Project Location Map

< Back
Next >

This Site is maintained by the Florida Department of Transportation Environmental Management Office. For additional information, please e-mail questions or comments to help@fle-etat.org or call 850-414-5334.

ETAT Review Wizard

Active project: #14209 SR 30 (US 98) from Santa Rosa CL to SR 393

Map it

etdm
Environmental Screening Tool

Search site for... Search

Saved Searches: Project History:

Alert Advanced Search My ETDM Bookmarks Logout

Hide <<

AOI Tools

Financial Office

Tools

Reports

Wizards

Perform ETAT Review

Create ETDM Project

Generate Summary Report

Update ETDM Project

Set Up User Preferences

Draft ETAT Notification

Prepare Invoice

Maps

Account Settings

Administration

Help

Perform ETAT Review

Perform ETAT Review

#14209 SR 30 (US 98) from Santa Rosa CL to SR 393

District: District 3 Phase: Programming Screen Contact Information: Peggy Kelley (850) 330-1517 peggy.kelley@dot.state.fl.us

1. Choose a Project to Review 2. View Project Description 3. Review Purpose and Need 4. Review Project Effects 5. Review Cumulative Effects

Projects Needing Review View Project Description Review Purpose and Need Review Project Effects Review Cumulative Effects

Hurricane Evacuation

This entirety of SR 30 / US 98 in Okaloosa County is designated as an evacuation route by the Florida Division of Emergency Management, and SR 393 is also an official evacuation route. Expanding this section of SR 30 / US 98 will enhance the hurricane and emergency evacuation capacity of coastal Okaloosa County.

Reminder

Reviews submitted here will be considered part of your agency's comments on the Advance Notification for this project. Additional comments on the Advance Notification that are not captured in your review of the project's Purpose and Need, direct effects, or indirect and cumulative effects can be submitted using the [Comment on Advance Notification Package](#) tool.

Enter Review Information

*Indicate whether the Purpose and Need is: ☐ Understood ☐ Not Understood

Purpose and Need Comments

Enter any comments you have regarding the Purpose and Need. Comments are required if you indicate the Purpose and Need is Not Understood.

B I U |

Cancel

Next >

This Site is maintained by the Florida Department of Transportation Environmental Management Office. For additional information, please e-mail questions or comments to help@fla-etdm.org or call 850-414-5334.

ETAT Review Wizard

Active project: #14209 SR 30 (US 98) from Santa Rosa CL to SR

Map it

etdm

Environmental Screening Tool

Search site for...

Search

Saved Searches:

Project History:

Alert

Advanced Search

My ETDM

Bookmarks

Logout

AOI Tools

Financial Office

Tools

Reports

Wizards

Perform ETAT Review

Create ETDM Project

Generate Summary Report

Update ETDM Project

Set Up User Preferences

Draft ETAT Notification

Prepare Invoice

Hide <<

Perform ETAT Review

Perform ETAT Review

#14209 SR 30 (US 98) from Santa Rosa CL to SR 393

District: District 3 Phase: Programming Screen Contact Information: Peggy Kelley (850) 330-1517 peggy.kelley@dot.state.fl.us

1. Choose a Project to Review

2. View Project Description

3. Review Purpose and Need

4. Review Project Effects

5. Review Cumulative Effects

Projects Needing Review

View Project Description

Review Purpose and Need

Review Project Effects

Review Cumulative Effects

Project Effects

#14209 SR 30 (US 98) from Santa Rosa CL to SR 393

District: District 3 Phase: Programming Screen Contact Information: Peggy Kelley (850) 330-1517 peggy.kelley@dot.state.fl.us

Review Options

Choose to use the short form or select an alternative and issue. Then click the button to begin your review and display Preliminary Environmental Discussion.

Alternatives

Issues

Alternative #1

Historic and Archaeological Sites

Change Options

Preliminary Environmental Discussion

Historic and Archaeological Sites

Alternative Level

Alternatives: #1

Degree of Effect: Moderate

Comments:

The Environmental Screening Tool (EST) Geographic Information System (GIS) analysis identified 11 archaeological/historic sites, 22 historic standing structures, one historic cemetery, one historic resource group, and no historic bridges located within the 500-foot project buffer area. Of the 11 archaeological sites, one was identified by the recorder as eligible (OK00239), but has not been evaluated by the State Historic Preservation Officer (SHPO); nine archaeological resources were also not evaluated by the SHPO and two were evaluated as ineligible by the SHPO. Of the 22 historic structures identified

< Back

Next >

Click to Open Map

30

ETAT Review Wizard

Active project: #14209 SR 30 (US 98) from Santa Rosa CL to SR

Map it

etdm
Environmental Screening Tool

Search site for... Search

Saved Searches: Project History:

Alert Advanced Search My ETDM Bookmarks Logout

Hide <<

Perform ETAT Review

Perform ETAT Review

#14209 SR 30 (US 98) from Santa Rosa CL to SR 393

District: District 3 Phase: Programming Screen Contact Information: Peggy Kelley (850) 330-1517 peggy.kelley@dot.state.fl.us

1. Choose a Project to Review

2. View Project Description

3. Review Purpose and Need

4. Review Project Effects

5. Review Cumulative Effects

Projects Needing Review

View Project Description

Review Purpose and Need

Review Project Effects

Review Cumulative Effects

Cumulative Effects Considerations Review

#14209 SR 30 (US 98) from Santa Rosa CL to SR 393

District: District 3 Phase: Programming Screen Contact Information: Peggy Kelley (850) 330-1517 peggy.kelley@dot.state.fl.us

Cumulative Effects Considerations

Identify resources and impacts of cumulative effects

Alternative Issue

Alternative #1 Wildlife and Habitat

Change Options

What resources in the area are at risk?

Recommend environmental resources that may need to be evaluated for cumulative effects during PD&E. Focus on priority resources in poor or declining condition that may be directly or indirectly affected by the project.

B I U

< Back

AOI Tools

Financial Office

Tools

Reports

Wizards

Perform ETAT Review

Create ETDM Project

Generate Summary Report

Update ETDM Project

Set Up User Preferences

Draft ETAT Notification

Prepare Invoice

Maps

Account Settings

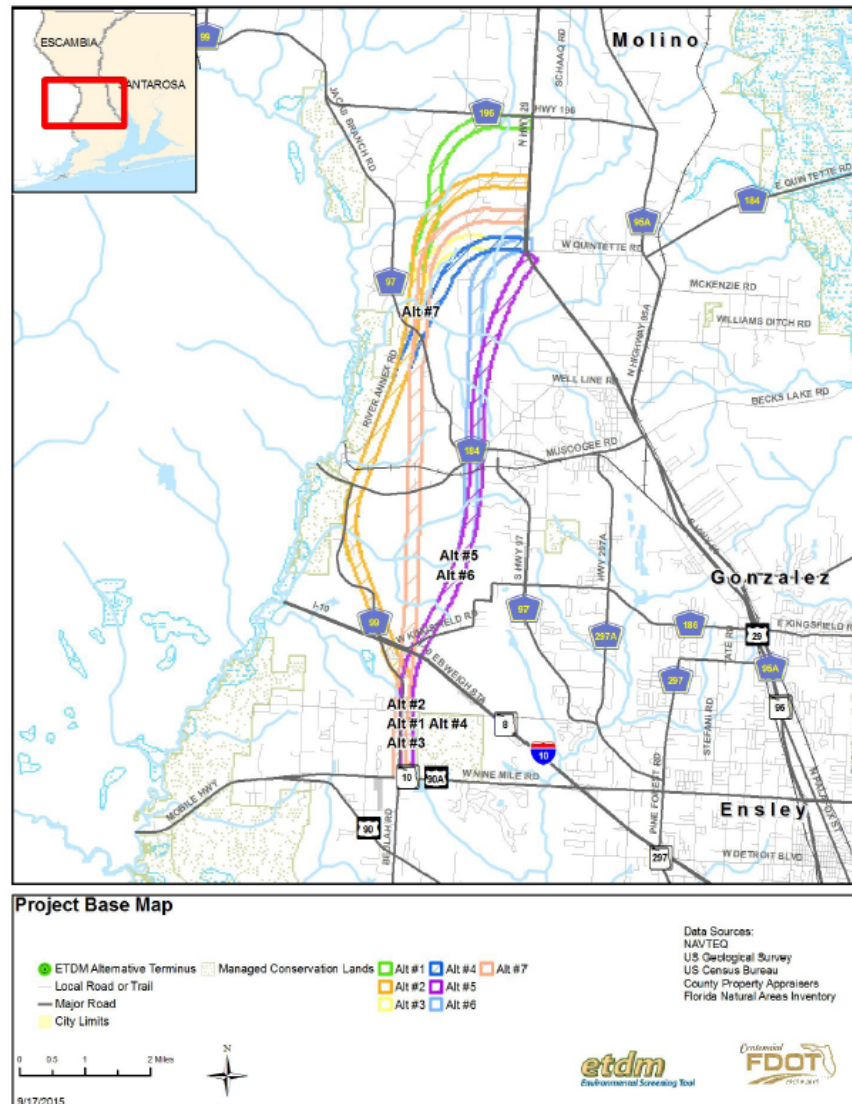
Administration

Help

Click to Open Map

Hard Copy Maps

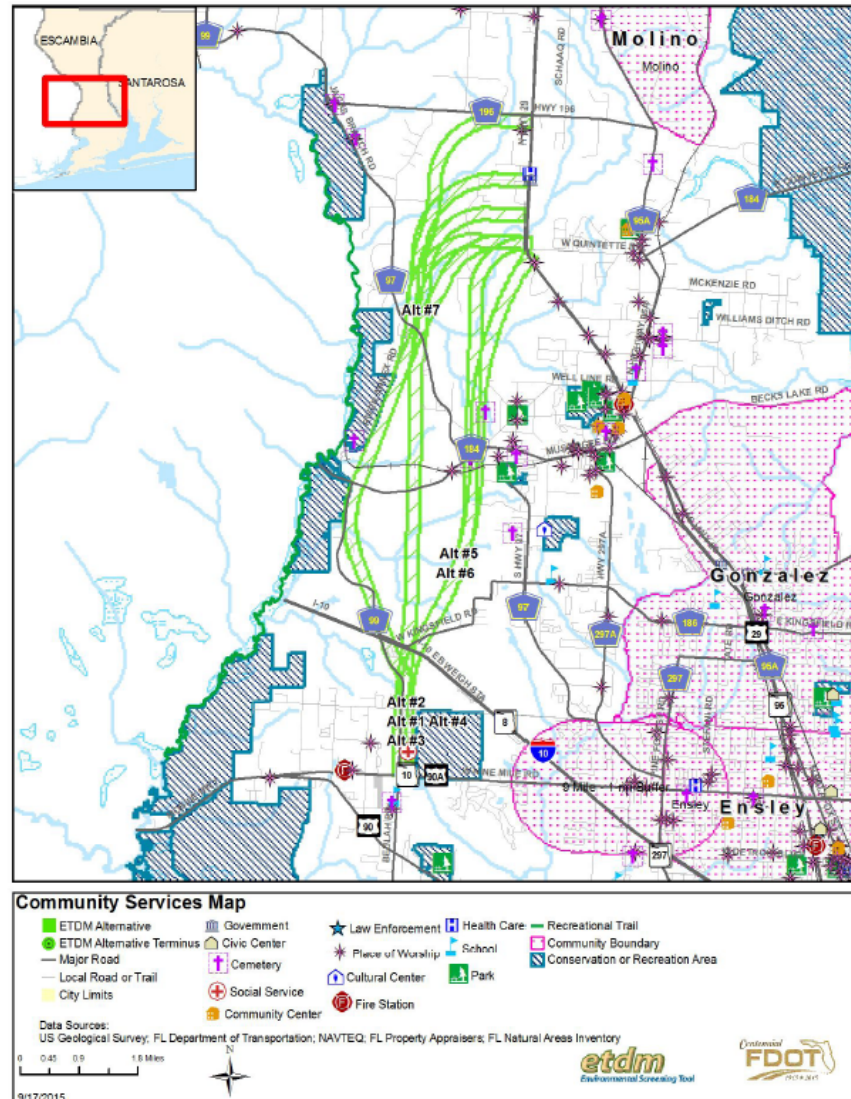
14059 Escambia Beltway from US 90A (SR10/ W. Nine
Mile Road) to US 29 (SR 95)
US 90A to US 29



This map and its content is made available by the Florida Department of Transportation on an "as is," "as available" basis without warranties of any kind, express or implied.

Hard Copy Maps

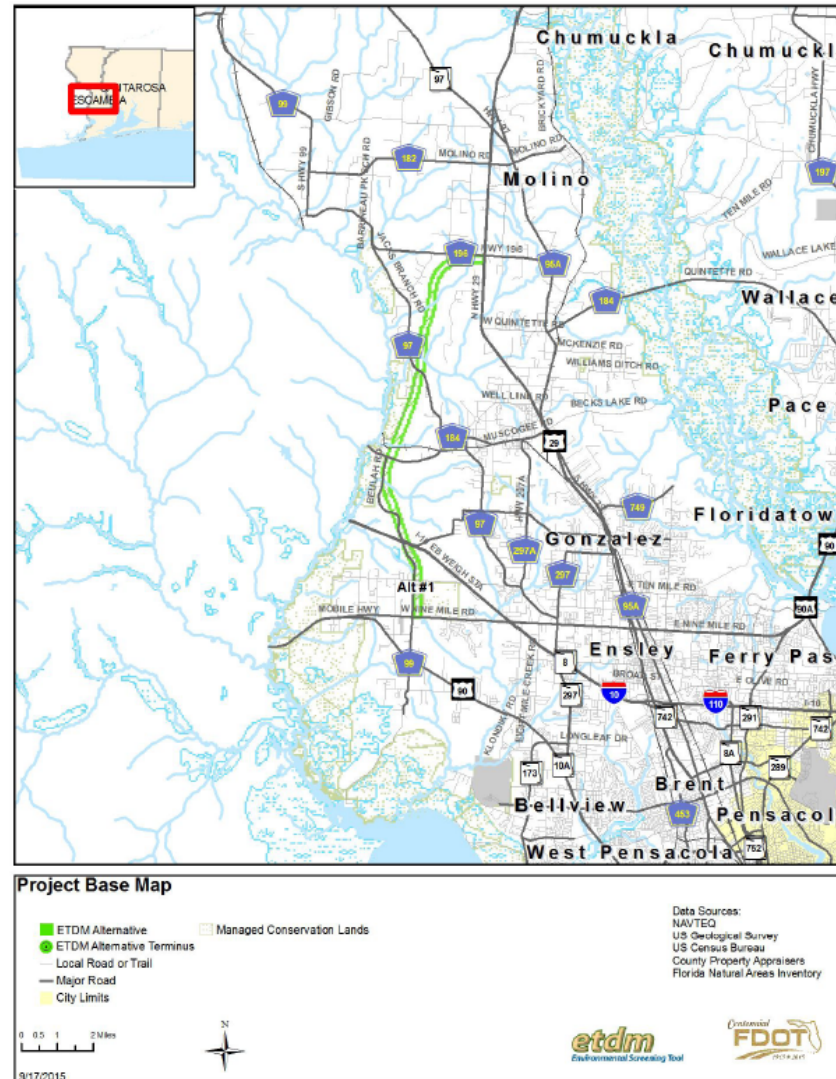
14059 Escambia Beltway from US 90A (SR10/ W. Nine
Mile Road) to US 29 (SR 95)
US 90A to US 29



This map and its content is made available by the Florida Department of Transportation on an "as is," "as available" basis without warranties of any kind, express or implied.

Hard Copy Maps

14059 Escambia Beltway from US 90A (SR10/ W. Nine
Mile Road) to US 29 (SR 95), Alternative 1
US 90A to US 29



New ETAT Notifications

- ◆ Dept. of Agriculture & Consumer Services
- ◆ US Coast Guard
- ◆ FDEP - Florida State Parks
- ◆ Dept. of Economic Opportunity

Dept. Agriculture & Consumer Services Notification (Resource Intersection)

The following FDOT sponsored project is under review and is accessible within the Environmental Screening Tool (EST). During this active project screening, you are encouraged review the project details and provide any comments or concerns you have. Click on the ETDM Number hyperlink to open the EST and review project description report.

ETDM #: [14059](#)

PROJECT NAME: Escambia Beltway from US 90A (SR10/ W. Nine Mile Road) to US 29 (SR 95)

FINANCIAL #: Not assigned at this time

FEDERAL INVOLVEMENT: Other Federal Permit

ACE PROJECT: Y

ALTERNATIVES: 1, 2, 3, 4, 5, 6, 7

MODES: Roadway, Bikeway, Pedestrian

SIS: N

DISTRICT: 3

COUNTY: Escambia

PLANNING ORGANIZATION: FDOT District 3

SCREEN: Programming Screen

REVIEW START: Friday, 9/18/2015

REVIEW END: Monday, 11/2/2015

ETDM COORDINATOR: Peggy Kelley
(850) 330-1517
peggy_kelley@dot.state.fl.us

PROJECT MANAGER: None assigned at this time

LEAD AGENCY: FHWA (proposed)

CLASS OF ACTION (COA): Not determined at this time

INTERSECTED RESOURCE

MOLINO TOWER

You are receiving this email because you have been named as a contact for the affected resource[s].

If you have questions regarding this notice, please contact help@fla-etat.org.

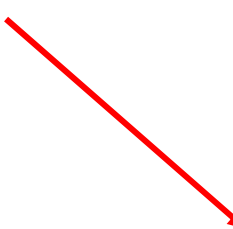
Thank you

<https://www.florida-etat.org/est/>
<http://etdmpub.florida-etat.org/>

US Coast Guard Notification (Resource Intersection)

The following FDOT sponsored project is under review and is accessible within the Environmental Screening Tool (EST). During this active project screening, you are encouraged review the project details and provide any comments or concerns you may have about this proposed project. Please click on the ETDm Number hyperlink to open the EST and review project description report.

ETDM #: [14059](#)
 PROJECT NAME: Escambia Beltway from US 90A (SR10/ W. Nine Mile Road) to US 29 (SR 95)
 FINANCIAL #: Not assigned at this time
 FEDERAL INVOLVEMENT: Other Federal Permit
 ACE PROJECT: Y
 ALTERNATIVES: 1, 2, 3, 4, 5, 6, 7
 MODES: Roadway, Bikeway, Pedestrian
 SIS: N
 DISTRICT: 3
 COUNTY: Escambia
 PLANNING ORGANIZATION: FDOT District 3
 SCREEN: Programming Screen
 REVIEW START: Friday, 9/18/2015
 REVIEW END: Monday, 11/2/2015
 ETDm COORDINATOR: Peggy Kelley
 (850) 330-1517
peggy_kelley@dot.state.fl.us
 PROJECT MANAGER: None assigned at this time
 LEAD AGENCY: FHWA (proposed)
 CLASS OF ACTION (COA): Not determined at this time



INTERSECTED RESOURCE	GNIS NAME	LATITUDE	LONGITUDE
STREAM/RIVER AT BEULAH RD		30.53874444	-87.3804426
STREAM/RIVER AT BEULAH RD		30.58972399	-87.39609525
STREAM/RIVER AT HWY 196	COWDEVIL CREEK	30.68053812	-87.35681078
STREAM/RIVER AT HWY 196		30.68067087	-87.36297496
STREAM/RIVER AT N HWY 29	JACKS BRANCH	30.65519729	-87.35158006
STREAM/RIVER AT RIVER ANNEX RD		30.61544652	-87.38777189
STREAM/RIVER AT RIVER ANNEX RD		30.61946671	-87.38612053
STREAM/RIVER AT RIVER ANNEX RD		30.62899202	-87.38236081
STREAM/RIVER AT W KINGSFIELD RD		30.56613754	-87.37429016

You are receiving this email because you have been named as a contact for the affected resource[s].

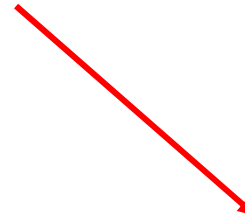
If you have questions regarding this notice, please contact help@fla-etat.org.

Thank you

US Coast Guard Notification (Resource Intersection with PED)

The following FDOT sponsored project is under review and is accessible within the Environmental Screening Tool (EST). During this active project screening, you are encouraged review the project details and provide any comments or concerns you may have about this proposed project. Please click on the ETDM Number hyperlink to open the EST and review project description report.

ETDM #: [14059](#)
PROJECT NAME: Escambia Beltway from US 90A (SR10/ W. Nine Mile Road) to US 29 (SR 95)
FINANCIAL #: Not assigned at this time
FEDERAL INVOLVEMENT: Other Federal Permit
ACE PROJECT: Y
ALTERNATIVES: 1, 2, 3, 4, 5, 6, 7
MODES: Roadway, Bikeway, Pedestrian
SIS: N
DISTRICT: 3
COUNTY: Escambia
PLANNING ORGANIZATION: FDOT District 3
SCREEN: Programming Screen
REVIEW START: Friday, 9/18/2015
REVIEW END: Monday, 11/2/2015
ETDM COORDINATOR: Peggy Kelley
 (850) 330-1517
peggy_kelley@dot.state.fl.us
PROJECT MANAGER: None assigned at this time
LEAD AGENCY: FHWA (proposed)
CLASS OF ACTION (COA): Not determined at this time



INTERSECTED RESOURCE	GNIS NAME	LATITUDE	LONGITUDE
STREAM/RIVER AT BEULAH RD		30.53874444	-87.3804426
STREAM/RIVER AT BEULAH RD		30.58972399	-87.39609525
STREAM/RIVER AT HWY 196	COWDEVIL CREEK	30.68053812	-87.35681078
STREAM/RIVER AT HWY 196		30.68067087	-87.36297496
STREAM/RIVER AT N HWY 29	JACKS BRANCH	30.65519729	-87.35158006
STREAM/RIVER AT RIVER ANNEX RD		30.61544652	-87.38777189
STREAM/RIVER AT RIVER ANNEX RD		30.61946671	-87.38612053
STREAM/RIVER AT RIVER ANNEX RD		30.62899202	-87.38236081
STREAM/RIVER AT W KINGSFIELD RD		30.56613754	-87.37429016

You are receiving this email because you have been named as a contact for the affected resource[s].

If you have questions regarding this notice, please contact help@fla-etat.org.

Thank you

Preliminary Environmental Discussion

Navigation

Alternatives: #1

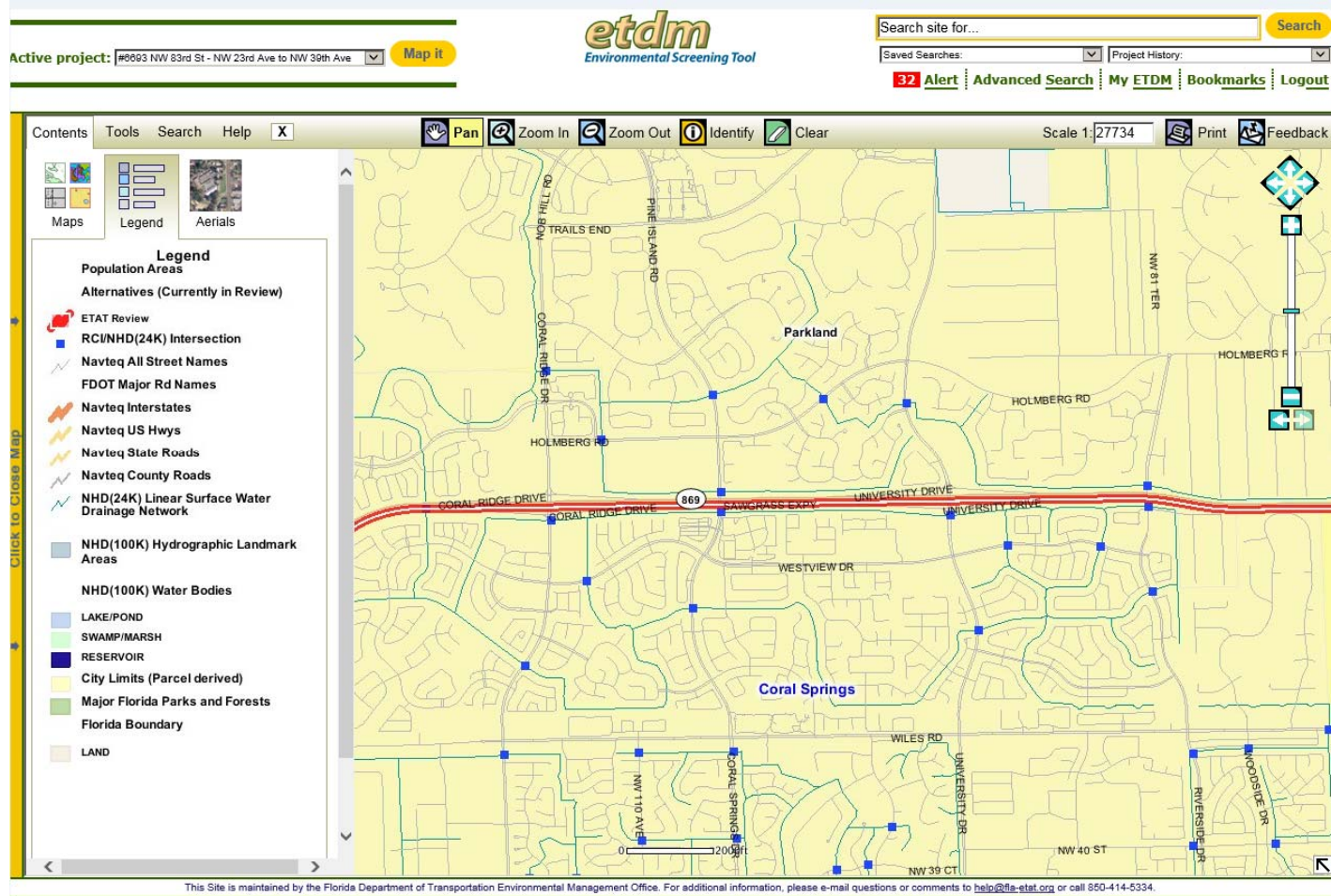
Degree of Effect: Minimal

Comments:

The Environmental Screening Tool (EST) Geographic Information System (GIS) analysis identified in the Roadway Characteristics Inventory (RCI) - National Hydrography Dataset (NHD) Flowline intersect dataset that there is a canal/ditch at Orange Ave. (-84.2860803 Long.; 30.41257928 Lat.) within the 100-foot project buffer area and a stream/river at Orange Avenue (-84.30478852 Long.; 30.41267289 Lat.) within the 500-foot project buffer area.

The proposed project is expected to have minimal involvement with navigation resources.

US Coast Guard Notification Map (RCI/NHD Intersection)



Florida State Parks (Resource Intersection)

The following FDOT sponsored project is under review and is accessible within the Environmental Screening Tool (EST). During this active project screening, you are encouraged review the project details and provide any comments or concerns you may have about this proposed project. Please click on the ETDM Number hyperlink to open the EST and review project description report.

ETDM #: [14239](#)
 PROJECT NAME: Orange Avenue from Springhill Road to Adams Street
 FINANCIAL #: 43790212201
 FEDERAL INVOLVEMENT: No Federal Involvement
 ACE PROJECT: N
 ALTERNATIVES: 1
 MODES: Roadway, Bikeway, Pedestrian
 SIS: N
 DISTRICT: 3
 COUNTY: Leon
 PLANNING ORGANIZATION: FDOT District 3
 SCREEN: Planning Screen
 REVIEW START: Friday, 9/11/2015
 REVIEW END: Monday, 10/26/2015
 ETDM COORDINATOR: Peggy Kelley
 (850) 330-1517
peggy_kelley@dot.state.fl.us
 PROJECT MANAGER: None assigned at this time
 LEAD AGENCY: FDOT (proposed)
 CLASS OF ACTION (COA): Not determined at this time

INTERSECTED RESOURCE

TALLAHASSEE SAINT MARKS HISTORIC RAILROAD STATE TRAIL

You are receiving this email because you have been named as a contact for the affected resource[s].

If you have questions regarding this notice, please contact help@fla-etat.org.

Thank you

Department of Economic Opportunity (Resource Intersection)

The following FDOT sponsored project is under review and is accessible within the Environmental Screening Tool (EST). During this active project screening, you are encouraged review the project details and provide any comments or concerns you may have about this proposed project. Please click on the ETDM Number hyperlink to open the EST and review project description report.

ETDM #: [5948](#)

PROJECT NAME: NDS : SR 33

FINANCIAL #: Not assigned at this time

FEDERAL INVOLVEMENT: Not determined at this time

ACE PROJECT: N

ALTERNATIVES: 1

MODES: Not Assigned.

SIS:

DISTRICT: 1

COUNTY: Polk

PLANNING ORGANIZATION: Polk TPO

SCREEN: Planning Screen

ETDM COORDINATOR: Brigitte D'Orval

test-PT-brigittedorval-ou213@devnull.fl-a-etat.org

PROJECT MANAGER: None assigned at this time

LEAD AGENCY: None assigned at this time

CLASS OF ACTION (COA): Not determined at this time

INTERSECTED RESOURCE

Lakeland

Polk City

You are receiving this email because you have been named as a contact for the affected resource[s].

If you have questions regarding this notice, please contact help@fla-etat.org.

Thank you

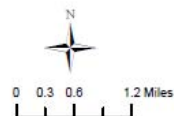
Cultural Resources Data Report (Coming Soon)

Cultural Resources Data Map

- Area of Interest
- Major Road
- Local Road or Trail
- Historic Structure
- Historic Bridge
- State Historic Highway
- Historic Cemetery
- Historic Resource Group
- Cultural Resource Field Survey Area

Year Built

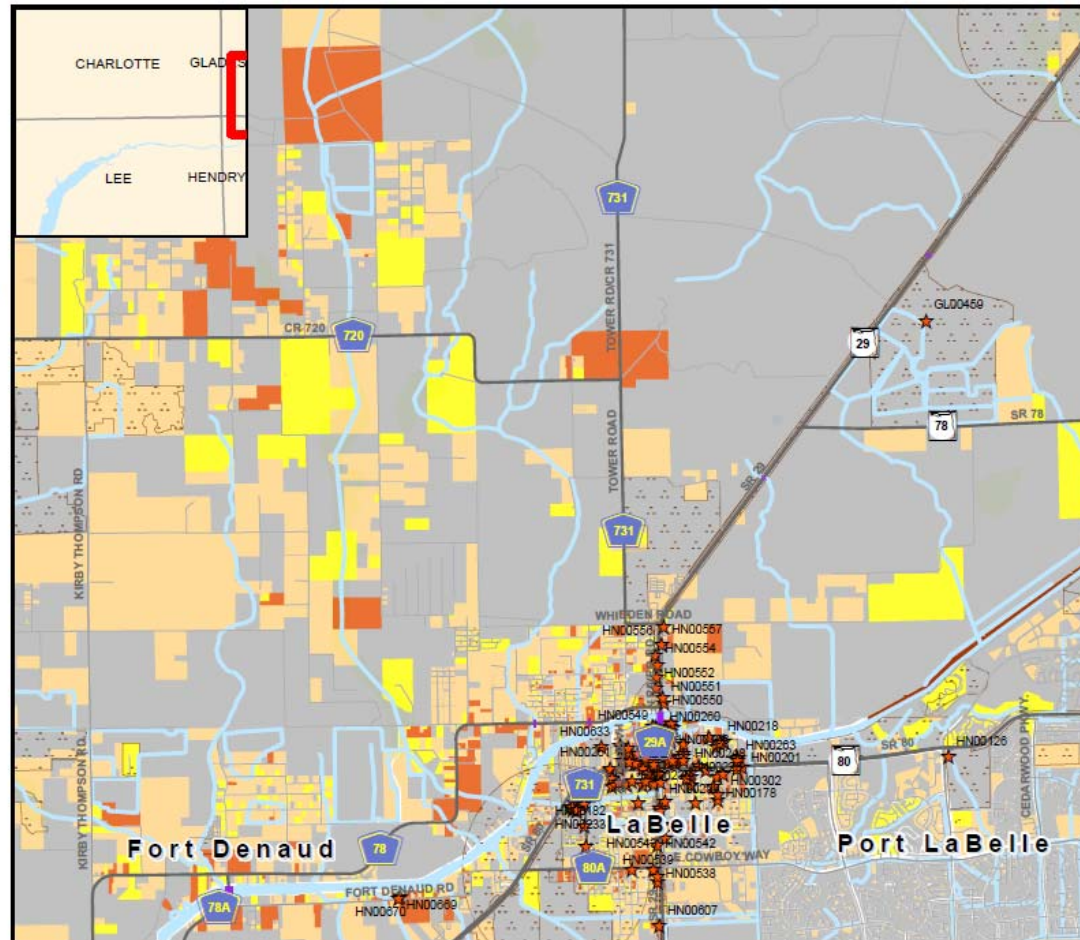
- Pre 1970
- Post 1980
- 1970 - 1979
- Parcels w/ no values



etdm
Environmental Screening Tool



Data Sources:
NAVTEQ
US Geological Survey
Florida Department of Transportation
Florida Department of State,
Bureau of Archaeological Research



This map and its content is made available by the Florida Department of Transportation on an "as is," "as available" basis without warranties of any kind, express or implied.
Note: Historic properties depicted on this map represent resources listed in the Florida Master Site File excluding archeological site locations, which, pursuant to Chapter 267.135, Florida Statutes, may be exempt from public record (Chapter 119.07, Florida Statutes). Absence of features on the map does not necessarily indicate an absence of resources in the project vicinity.

Cultural Resources Data Report (Coming Soon)

CulturalResourcesDataReport.pdf - Adobe Acrobat

File Edit View Document Comments Forms Tools Advanced Window Help

Create Combine Collaborate Secure Sign Forms Comment

1 / 12 96% Find

Cultural Resources Data Report

Titusville Test AOI Area of Interest

This AOI will be available in the EST until 09/25/2015
Last updated by Kevin Adderly @ FDOT District 5

Titusville Test AOI - Feature 1 Summary

Analysis Type	Date Run	Features within AOI Count
Cultural Resources Data Report		
D1 - Year Built by Decade (1970's)	Not Analyzed	Not Analyzed
D2 - Year Built by Decade (1970's)	Not Analyzed	Not Analyzed
D3 - Year Built by Decade (1970's)	Not Analyzed	Not Analyzed
D4 - Year Built by Decade (1970's)	Not Analyzed	Not Analyzed
D4 - Year Built by Decade (Before 1970)	Not Analyzed	Not Analyzed
D5 - Year Built by Decade (1970's)	08/25/2015	279
D6 - Year Built by Decade (1970's)	Not Analyzed	Not Analyzed
D7 - Year Built by Decade (1970's)	Not Analyzed	Not Analyzed
Florida Site File Archaeological or Historic Sites	08/25/2015	1
Florida Site File Cemeteries	08/25/2015	0
Florida Site File Field Survey Project Boundaries	08/25/2015	13
Florida Site File Historic Bridges	08/25/2015	0
Florida Site File Historic Standing Structures	08/25/2015	27
Florida Site File Resource Groups	08/25/2015	2
Local Florida Parks and Recreational Facility Boundaries	08/25/2015	4
National Register of Historic Places	08/25/2015	0

D5 - Year Built by Decade (1970's)

Metadata: http://www.fla-etat.org/est/metadata/yb_decades_d5.htm
Titusville Test AOI, analyzed on 08/25/2015.

Footprint analyzed

Decade Built	Parcel count
1970 - 1979	1
1970 - 1979	3
1970 - 1979	1
1970 - 1979	1
1970 - 1979	2
1970 - 1979	1
1970 - 1979	2
1970 - 1979	3
1970 - 1979	2
1970 - 1979	3

Page 1 of 12 Cultural Resources Data Report Printed on: 9/23/2015

Cultural Resources Data Report (Coming Soon)



CulturalResourcesDataReport.pdf - Adobe Acrobat

File Edit View Document Comments Forms Tools Advanced Window Help

Create Combine Collaborate Secure Sign Forms Comment

9 / 12 96% Find

Summary: .1 acres, 0 percent of analysis area.

Florida Site File Field Survey Project Boundaries
Field Survey Project Boundaries
Metadata: http://www.fla-etat.org/est/metadata/shpo_surveys.htm
Titusville Test AOI, analyzed on 08/25/2015.
Footprint analyzed

Title	Publication Date	Manuscript Number
AN ARCHAEOLOGICAL AND HISTORICAL SURVEY OF THE 10020050-TITUSVILLE TOWER, TITUSVILLE, BREVARD COUNTY, FLORIDA (FCC FORM 620)	2009	16299
A CULTURAL RESOURCES ASSESSMENT SURVEY FOR THE SR 405/FOX LAKE ROAD PARCEL, TITUSVILLE, BREVARD COUNTY, FLORIDA	2011	18772
PHASE I CULTURAL RESOURCE SURVEY OF THE COLONIAL COAST CROSSING PROPERTY, BREVARD COUNTY, FLORIDA	2012	18780
CITY OF TITUSVILLE CRA HISTORIC PROPERTY SURVEY, BREVARD COUNTY, FLORIDA	2012	21579
HISTORIC PROPERTIES SURVEY, TITUSVILLE, FLORIDA	1987	1567
ARCHAEOLOGICAL ASSESSMENT OF SIX SELECTED AREAS IN BREVARD COUNTY: A FIRST GENERATION MODEL	1990	2391
A HISTORICAL RECONNAISSANCE SURVEY OF THE PROPOSED ME-025 SAND POINT TOWER LOCATION IN BREVARD COUNTY, FLORIDA	2001	7980
CULTURAL RESOURCE SURVEY: PROPOSED CELL TOWER SITE: TITUSVILLE/ COCOA AIRPORT INDIAN RIVER CITY, BREVARD COUNTY, FLORIDA	2001	8492
AN ARCHAEOLOGICAL RECONNAISSANCE SURVEY OF THE PROPOSED PLANTATION OAKS DEVELOPMENT, TITUSVILLE, BREVARD COUNTY, FLORIDA	2003	8846
SURVEY AND ASSESSMENT OF POTENTIAL HISTORIC PROPERTIES WITHIN THE ONE MILE AREA OF POTENTIAL EFFECTS OF THE PROPOSED 250FT TITUSVILLE- SR405 TELECOMMUNICATIONS TOWER, BREVARD COUNTY, FLORIDA	2001	7986
A CULTURAL RESOURCES ASSESSMENT SURVEY OF THE LASCHOBBER PARCEL, TITUSVILLE, BREVARD COUNTY, FLORIDA	2005	11685
CULTURAL RESOURCE ASSESSMENT SURVEY FOX LAKE HAMMOCK, BREVARD COUNTY, FLORIDA	2005	11266
PRELIMINARY ARCHAEOLOGICAL ASSESSMENT: THE SANCTUARY OF TITUSVILLE, SECTION 1-LOTS 1, 2, & 31.02	2005	14266

Summary: 6822.36 acres, 120.09 percent of analysis area.

Florida Site File Historic Standing Structures
Historic Standing Structures recorded in the Florida State Historic Preservation Office Master Site File
Metadata: http://www.fla-etat.org/est/metadata/shpo_structures.htm

Page 9 of 12 Cultural Resources Data Report Printed on: 9/23/2015

Cultural Resources Data Report (Coming Soon)

CulturalResourcesDataReport.pdf - Adobe Acrobat

File Edit View Document Comments Forms Tools Advanced Window Help

Create Combine Collaborate Secure Sign Forms Comment

10 / 12 96% Find

Titusville Test AOI, analyzed on 08/25/2015.
Footprint analyzed

Site ID	Structure Name	Year Built	Survey Evaluation	SHPO Evaluation
BR00356	205 ACORN ST		NOT EVALUATED BY RECORDER	NOT EVALUATED BY SHPO
BR00357	212 ACORN ST		NOT EVALUATED BY RECORDER	NOT EVALUATED BY SHPO
BR00358	713 BRIDGE ST		NOT EVALUATED BY RECORDER	NOT EVALUATED BY SHPO
BR00359	715 BRIDGE ST		NOT EVALUATED BY RECORDER	NOT EVALUATED BY SHPO
BR00365	4050 COQUINA AVE		NOT EVALUATED BY RECORDER	NOT EVALUATED BY SHPO
BR00366	4030 COQUINA AVE		NOT EVALUATED BY RECORDER	NOT EVALUATED BY SHPO
BR00382	811 DUMMITT AVE		NOT EVALUATED BY RECORDER	NOT EVALUATED BY SHPO
BR00383	900 DUMMITT AVE		NOT EVALUATED BY RECORDER	NOT EVALUATED BY SHPO
BR00384	904 DUMMITT AVE		NOT EVALUATED BY RECORDER	NOT EVALUATED BY SHPO
BR00446	4510 MT VERNON AVE		NOT EVALUATED BY RECORDER	NOT EVALUATED BY SHPO
BR00460	806 OLIVE AVE		NOT EVALUATED BY RECORDER	NOT EVALUATED BY SHPO
BR00470	723 PALM AVE	C1925	INELIGIBLE FOR NRHP	NOT EVALUATED BY SHPO
BR00471	800 S PALM ST	1926	INELIGIBLE FOR NRHP	NOT EVALUATED BY SHPO
BR00489	200 SEMINOLE ST		NOT EVALUATED BY RECORDER	NOT EVALUATED BY SHPO
BR00532	1702 WASHINGTON AVE S		NOT EVALUATED BY RECORDER	NOT EVALUATED BY SHPO
BR00535	1006 FIRST AVE		NOT EVALUATED BY RECORDER	NOT EVALUATED BY SHPO
BR00536	1011 FIRST AVE		NOT EVALUATED BY RECORDER	NOT EVALUATED BY SHPO
BR00537	1018 FIRST AVE		NOT EVALUATED BY RECORDER	NOT EVALUATED BY SHPO
BR00538	1018 SECOND AVE		NOT EVALUATED BY RECORDER	NOT EVALUATED BY SHPO
BR02824	AT&T BUILDING	C1959	INELIGIBLE FOR NRHP	NOT EVALUATED BY SHPO
BR02827	708 S HOPKINS AVENUE	C1936	INELIGIBLE FOR NRHP	NOT EVALUATED BY SHPO
BR02829	LEMUEL'S AUTO SALES	C1954	INELIGIBLE FOR NRHP	NOT EVALUATED BY SHPO
BR02830	NISSAN FISCHER - COLLISION CENTER	C1961	INELIGIBLE FOR NRHP	NOT EVALUATED BY SHPO
BR02831	ADVENT ELECTRIC LLC	C1962	INELIGIBLE FOR NRHP	NOT EVALUATED BY SHPO
BR02832	1214 S. HOPKINS AVE	C1950	INELIGIBLE FOR NRHP	NOT EVALUATED BY SHPO
BR02833	1236 S. HOPKINS AVE	C1950	INELIGIBLE FOR NRHP	NOT EVALUATED BY SHPO
BR02877	822 S. PALM AVENUE	C1959	INELIGIBLE FOR NRHP	NOT EVALUATED BY SHPO

Summary: 27 feature(s) found within buffer.

Florida Site File Resource Groups
Resource Groups
Metadata: http://www.fla-etat.org/est/metadata/shpo_res_groups.htm

Titusville Test AOI, analyzed on 08/25/2015.
Footprint analyzed

Site ID	Site Name	Resource Group Type	Time Period of Significance	Time Period of Significance	SHPO Evaluation
BR01870	FLORIDA EAST COAST	LINEAR RESOURCE	AMERICAN, 1821-	NINETEENTH CENTURY	ELIGIBLE FOR NRHP

Page 10 of 12 Cultural Resources Data Report Printed on: 9/23/2015

For More Information

Presenter:

Dean Rogers

850-414-5348

Dean.Rogers@dot.state.fl.us

References :

- ◆ FDOT PD&E Manual
 - Available at:
<http://www.dot.state.fl.us/emo/pubs/pdeman/pdeman1.shtm>
- ◆ FDOT ETDM Manual
 - Available at:
<http://www.dot.state.fl.us/emo/pubs/etdm/etdmmanual.shtm>

