

The background is a dark, abstract image with green and blue light patterns, resembling a digital or forensic theme. The text "CSI:" is prominently displayed in a large, white, stylized font with a black outline. Below it, the words "CRIME SCENE INVESTIGATION" are written in a smaller, white, sans-serif font. Further down, the words "CONDENSED SIMPLIFIED" are written in a smaller, white, sans-serif font. At the bottom, the word "REEVALUATIONS" is written in a large, yellow, sans-serif font.

# CSI:

CRIME SCENE INVESTIGATION

CONDENSED SIMPLIFIED

REEVALUATIONS

# REEVALUATIONS

- **What is a Reevaluation?**
  - The reevaluation is the only instrument available to fully document compliance with Federal laws and any changes that may have occurred on a project since the approval of the original final environmental document or CE designation.



# REEVALUATIONS

- **Why is a Reevaluation needed?**
  - ***23 CFR Part 771.129(c)*** states that "after approval of the EIS, FONSI, or CE designation, the applicant shall consult with the Administration prior to requesting any major approvals or grants to establish whether or not the approved environmental document or CE designation remains valid for the requested Administration action".



# REEVALUATIONS

- **When is a Reevaluation Needed?**

- Reevaluations are required when the time elapsed between the environmental document approval date or the last reevaluation date and the expected authorization date of the subsequent phase is greater than one year, or
- Any time during the project development process when a major change in the project's location and design concept has occurred, or
- For a DEIS, if more than three years have lapsed since the circulation of the approved DEIS or supplemental environmental document.

# REEVALUATIONS

- **When are Reevaluations typically conducted?**
  - During the Design Phase
  - Prior to the Advancement of the Project to the Next Major Production Phase (Right-of-Way and Construction)





# REEVALUATIONS

Activity ID	Activity Name	Original Duration	Year									
			1	2	3	4	5	6	7	8	9	10
<b>Phase 32 Capacity PHASE 32 CAPACITY PROJECT TEMPLATE</b>			<b>1628</b>									
<b>Preliminary Engineering</b>			<b>132</b>									
250010	PRELIMINARY ENGINEERING BEGIN	1	PRELIMINARY ENGINEERING BEGIN									
256010	DESIGN TRAFFIC	25	■ DESIGN TRAFFIC									
235010	BIKE / PED / TOPS / SAFETY RECOMMENDATIONS	25	■ BIKE / PED / TOPS / SAFETY RECOMMENDATIONS									
164010	PREPARE SCOPE OF SERVICES	35	■ PREPARE SCOPE OF SERVICES									
450032	PH 32 TIP / STIPAMENDMENT	60	■ PH 32 TIP / STIPAMENDMENT									
295010	PREPARE ENVIRONMENTAL DOCUMENT	100	■ PREPARE ENVIRONMENTAL DOCUMENT									
164032	DESIGN FINAL SCOPE COMPLETED	1	I DESIGN FINAL SCOPE COMPLETED									
299032	D3 DESIGN FEDERAL AUTHORIZATION REQUEST	1	I D3 DESIGN FEDERAL AUTHORIZATION REQUEST									
452010	PH 32 DESIGN AUTHORIZATION	1	I PH 32 DESIGN AUTHORIZATION									
<b>Design Consultant Acquisition</b>			<b>101</b>									
232032	CONSULTANT ADVERTISE	1	I CONSULTANT ADVERTISE									
401032	CONSULTANT SHORTLIST	1	I CONSULTANT SHORTLIST									
230032	CONSULTANT SCOPE MEETING	1	I CONSULTANT SCOPE MEETING									
402032	CONSULTANT FINAL SELECTION	1	I CONSULTANT FINAL SELECTION									
452032	PH 32 DESIGN ENCUMBRANCE	1	I PH 32 DESIGN ENCUMBRANCE									
233032	P.E. CONSULTANT CONTRACT EXECUTED	1	I P.E. CONSULTANT CONTRACT EXECUTED									
<b>Roadway Design</b>			<b>504</b>									
113010	KICK-OFF MEETING	1	I KICK-OFF MEETING									
290010	COMMUNITY AWARENESS PLAN SUBMITTAL	1	I COMMUNITY AWARENESS PLAN SUBMITTAL									
153010	PERFORM PAVEMENT SURVEY	20	■ PERFORM PAVEMENT SURVEY									
106010	PREPARE SURVEY (DESIGN / ROW / BRIDGE)	100	■ PREPARE SURVEY (DESIGN / ROW / BRIDGE)									
197010	PAVEMENT DESIGN	5	I PAVEMENT DESIGN									
290020	APPROVE COMMUNITY AWARENESS PLAN	1	I APPROVE COMMUNITY AWARENESS PLAN									
286032	SUBMIT TO FHWA - REEV. FOR DESIGN	1	I SUBMIT TO FHWA - REEV. FOR DESIGN									
106020	REVIEW SURVEY (DESIGN / ROW / BRIDGE)	60	■ REVIEW SURVEY (DESIGN / ROW / BRIDGE)									
336010	REEV. FOR DESIGN	65	■ REEV. FOR DESIGN									
113020	PREPARE PH I (30%) DESIGN PLANS	65	■ PREPARE PH I (30%) DESIGN PLANS									
294010	PROCESS EXCEPTIONS / VARIANCES	1	I PROCESS EXCEPTIONS / VARIANCES									
260010	TYPICAL SECTION 1ST SUBMITTAL	1	I TYPICAL SECTION 1ST SUBMITTAL									
339010	VALUE ENGINEERING STUDY	15	■ VALUE ENGINEERING STUDY									
301010	REVIEW PH I (30%) DESIGN PLANS	15	■ REVIEW PH I (30%) DESIGN PLANS									
131010	PH I ROADWAY SOIL SURVEY / REPORT	45	■ PH I ROADWAY SOIL SURVEY / REPORT									
247010	LOCAL GOVERNMENT / OFF SYSTEM PROJECT AGREEMENT	60	■ LOCAL GOVERNMENT / OFF SYSTEM PROJECT AGREEMENT									

Data Date: 01-Jul-13

Page 1 of 5

ALL SCHEDULES ARE PRELIMINARY AND SUBJECT TO CHANGE.

Run: 30-Sep-13 09:31

© Primavera Systems, Inc.

# REEVALUATIONS

Activity ID	Activity Name	Original Duration	Year										
			1	2	3	4	5	6	7	8	9	10	
113030	PREPARE PH II (60%) DESIGN PLANS	80			■								
372010	PREPARE PAVEMENT TYPE RPT PH I (30%)	40			■								
372020	SUBMIT PAVEMENT TYPE RPT PH I (30%)	1											
109010	SUBMIT POND SITING REPORT	1											
182010	REQUEST STRUCTURE NUMBER	1											
292010	PUBLIC INFORMATION MEETING	1											
272010	PRE PERMITS APPLICATION MEETING	1											
235020	BIKE / PED REVIEW	5											
297015	PH II (60%) DESIGN PLANS ESTIMATE	5											
267010	R/R REVIEW PH II (60%) PLANS	15			■								
302010	REVIEW PH II (60%) DESIGN PLANS	15			■								
272020	PERMITS APPLICATION RECEIVED	1											
109020	REVIEW POND SITING REPORT	15			■								
323010	MITIGATION	120			■								
145010	PERMITS	240			■								
348010	PH II (60%) WORKSHOP	1											
238010	PH II (60%) REVIEW INTERIM CONSULTANT EVALUATION	1											
333032	PH 32 CULTURAL RESOURCES ASSESSMENT SURVEY	60			■								
113050	PREPARE PH III (90%) DESIGN PLANS	60			■								
297019	PH III (90%) DESIGN PLANS ESTIMATE	5											
303010	REVIEW PH III (90%) DESIGN PLANS	15			■								
132010	PH II ROADWAY SOIL SURVEY / REPORT	45			■								
113060	PREPARE PH IV (100%) DESIGN PLANS	60			■								
373010	PREPARE PAVEMENT TYPE RPT PH II (60%)	40			■								
260020	TYPICAL SECTION CONCURRENCE	1											
297020	PH IV (100%) DESIGN PLANS ESTIMATE	5											
310010	REVIEW PH IV (FBA) DESIGN PLANS	15			■								
130010	ROADWAY GEOTECHNICAL CONCURRENCE	15			■								
373020	SUBMIT PAVEMENT TYPE RPT PH II (60%)	1											
236010	PH IV (100%) REVIEW INTERIM CONSULTANT EVALUATION	1											
113070	PREPARE FINAL DESIGN PLANS	30			■								
325010	TIITF EXECUTED	1											
Bridge Design		311											
169010	REQUEST FOR PRELIMINARY GEOTECH	1											
274010	PREPARE BRIDGE HYDRAULICS REPORT	80			■								

Data Date: 01-Jul-13

Run: 30-Sep-13 09:31

Page 2 of 5

ALL SCHEDULES ARE PRELIMINARY AND SUBJECT TO CHANGE.

© Primavera Systems, Inc.

# REEVALUATIONS

Activity ID	Activity Name	Original Duration	Year									
			1	2	3	4	5	6	7	8	9	10
277010	PREPARE BRIDGE DEVELOPMENT REPORT	80		■	■							
115010	PREPARE PH I (30%) BRIDGE PLANS	80		■	■							
133010	PHASE I GEOTECH FIELD INVESTIGATIONS	20		■	■							
116010	PHASE I GEOTECH LAB TESTING	20		■	■							
271010	PHASE I GEOTECH REPORT	40		■	■							
274020	REVIEW & APPROVE BRIDGE HYDRAULICS REPORT	30		■	■							
277020	REVIEW & APPROVE BRIDGE DEVELOPMENT REPORT	30		■	■							
118010	REVIEW PH I (30%) BRIDGE PLANS	30		■	■							
133020	PHASE II GEOTECH FIELD INVESTIGATIONS	20		■	■							
183010	PREPARE BRIDGE LOAD RATING	40		■	■							
116020	PHASE II GEOTECH LAB TESTING	20		■	■							
271020	PHASE II GEOTECH ANALYSIS & REPORT	20		■	■							
115020	PREPARE PH III (90%) BRIDGE PLANS	60		■	■							
184010	SUBMIT BRIDGE LOAD RATING	1		■	■							
185010	REVIEW BRIDGE LOAD RATING	15		■	■							
118020	REVIEW PH III (90%) BRIDGE PLANS	15		■	■							
186010	BRIDGE LOAD RATING APPROVED	1		■	■							
271040	PHASE III GEOTECH ANALYSIS	20		■	■							
115030	PREPARE PH IV (100%) BRIDGE PLANS	60		■	■							
118030	REVIEW PH IV (100%) BRIDGE PLANS	15		■	■							
271030	BRIDGE GEOTECHNICAL CONCURRENCE	15		■	■							
<b>Utilities</b>		<b>197</b>										
264010	UTILITY CONTACT	1		I								
265010	UTILITY PRE-DESIGN CONFERENCE	1		I								
126010	UTILITY RELOCATION SCHEDULES	30		■								
951010	UTILITY DEPENDANT TIME TO PROJECT MANAGER	10		■								
126020	REVISE UTILITY RELOCATION SCHEDULES	10		■								
266010	UTILITIES CERTIFIED	1		I								
<b>Surveying &amp; Mapping</b>		<b>577</b>										
324010	PREPARE R/W CONTROL / MAINTENANCE MAPS	60		■	■							
324020	REVIEW / APPROVE R/W CONTROL / MAINTENANCE MAP	20		■	■							
138010	PREPARE PRELIMINARY R/W REQUIREMENTS	120		■	■							
142010	SUBMIT PRELIMINARY R/W REQUIREMENTS	1		■	■							
210010	REVIEW PRELIMINARY R/W REQ	20		■	■							
45004X	PH 4X TIP / STIPAMENDMENT	60		■	■							

Data Date: 01-Jul-13

Run: 30-Sep-13 09:31

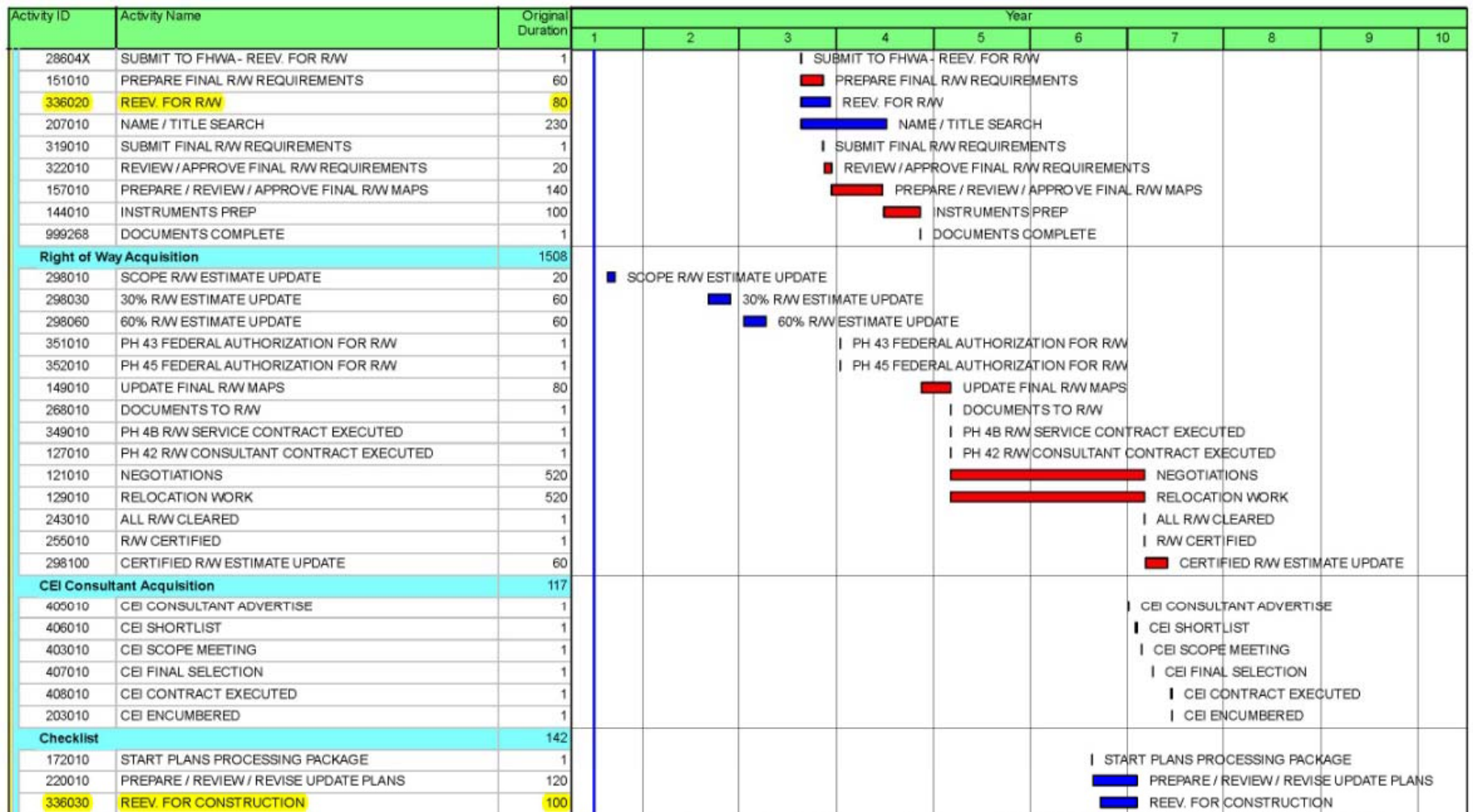
Page 3 of 5

ALL SCHEDULES ARE PRELIMINARY AND SUBJECT TO CHANGE.

© Primavera Systems, Inc.



# REEVALUATIONS



Data Date: 01-Jul-13

Page 4 of 5

ALL SCHEDULES ARE PRELIMINARY AND SUBJECT TO CHANGE.

Run: 30-Sep-13 09:31

© Primavera Systems, Inc.

# REEVALUATIONS

Activity ID	Activity Name	Original Duration	Year									
			1	2	3	4	5	6	7	8	9	10
222010	ALL PERMITS CLEAR	100							■	ALL PERMITS CLEAR		
242010	PREPARE SPECIFICATIONS	120							■	PREPARE SPECIFICATIONS		
163010	MAINT. AGREEMENT (TRAFFIC SIGNALS)	120							■	MAINT. AGREEMENT (TRAFFIC SIGNALS)		
286052	SUBMIT TO FHWA - REEV. FOR CONSTRUCTION	1								SUBMIT TO FHWA - REEV. FOR CONSTRUCTION		
450052	PH 52 TIP / STIPAMENDMENT	60							■	PH 52 TIP / STIPAMENDMENT		
266020	UTILITIES RECERTIFIED	20							■	UTILITIES RECERTIFIED		
296010	ENVIRONMENTAL CERTIFICATION TO PM	20							■	ENVIRONMENTAL CERTIFICATION TO PM		
291010	THERMO QUANTITIES TO PM	20							■	THERMO QUANTITIES TO PM		
213010	PERMITS CERTIFICATION TO PM	20							■	PERMITS CERTIFICATION TO PM		
248010	PE CERTIFICATION TO PM	20							■	PE CERTIFICATION TO PM		
279020	RAILROAD CLEAR LETTER TO PM	20							■	RAILROAD CLEAR LETTER TO PM		
187010	R/W CERTIFICATION FORM	20							■	R/W CERTIFICATION FORM		
297030	UPDATE ESTIMATE	15							■	UPDATE ESTIMATE		
228010	UTILITIES CERTIFICATION TO PM	1								UTILITIES CERTIFICATION TO PM		
<b>Production</b>		<b>2</b>										
904010	PID	1								PID		
204010	PRODUCTION DATE	1								PRODUCTION DATE		
<b>Plans Processing</b>		<b>61</b>										
305010	SUBMIT PACKAGE TO PLANS PROCESSING	1								SUBMIT PACKAGE TO PLANS PROCESSING		
306010	APPROVED PLANS PROCESSING PACKAGE	1								APPROVED PLANS PROCESSING PACKAGE		
242020	REVIEW P. S. & E PACKAGE	35							■	REVIEW P. S. & E PACKAGE		
297040	PREPARE AUTHORIZATION ESTIMATE	10							■	PREPARE AUTHORIZATION ESTIMATE		
212010	TRANSMIT PACKAGE FOR LETTING	1								TRANSMIT PACKAGE FOR LETTING		
452052	PH 52 CONSTRUCTION AUTHORIZATION	1								PH 52 CONSTRUCTION AUTHORIZATION		
280010	LETTING DATE	1								LETTING DATE		
<b>Construction</b>		<b>2</b>										
312010	CONSTRUCTION	1								CONSTRUCTION		
445020	ACTIVE OWNERSHIP AGREEMENT	1								ACTIVE OWNERSHIP AGREEMENT		
166010	BONUS COMMITMENT DATE	1								BONUS COMMITMENT DATE		

# REEVALUATIONS

## Upcoming Reevaluations in District 3:

### *SR 87 from US 98 to US 90 in Santa Rosa County*

- Widening from 2 to 4 lanes
- Type 2 CE approved in 1997
- ROW and Construction Reevaluation is due in 2014
- Construction is scheduled to be let in 2015



# REEVALUATIONS

## Upcoming Reevaluations in District 3:

### *SR 77 from Bay County line to Jackson County line*

- Widening from 2 to 4 lanes
- EA/FONSI approved in 2006
- ROW and Construction Reevaluation is due in 2014 for portion from south of CR 276 to Blue Lake Road
- Construction for this segment is scheduled to be let in 2015





# REEVALUATIONS

## Upcoming Reevaluations in District 3:

*SR 390 (St. Andrews Boulevard) from 23<sup>rd</sup> Street to SR 77 in Bay County*

- Widening from 2 to 6 lanes
- Type 2 CE approved in 1988
- ROW and Construction Reevaluation is due in 2014
- Construction is scheduled for 2017 & 2018  
*(project split into 2 segments)*



# REEVALUATIONS

- **How are Reevaluations Processed?**

- *If no major changes and it has been less than 3 years since the last approval*

- FDOT documents the results of the consultation with FHWA. No signature is required from FHWA

- *If major changes have occurred, or it has been 3 or more years since the approval of the original document or last reevaluation*

- The complete reevaluation package is forwarded to the Federal Highway Administration (FHWA) Division Administrator (or the lead federal agency if other than FHWA) for review and concurrence.

# REEVALUATIONS

FDOT prepares the  
Reevaluation and  
submits to FHWA



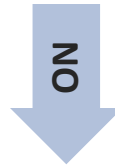
Are there  
significant changes  
to impacts?

YES



Consult with FHWA  
to determine level  
of supplemental  
documentation

NO



Proceed with  
Project



FHWA concurrence



# REEVALUATIONS

- **FDOT D3 Reevaluation Examples:**

- **Widening SR 123 (Roger J. Clary Highway) from north of SR 85S to SR 85N in Okaloosa County**

- **2012** - *EA/FONSI approved by FHWA*
- **10/15/2013** - *ROW and Construction Reevaluation approved by FHWA*
- **2014** – *Scheduled to be let for Construction*

Florida Department of Transportation  
PROJECT REEVALUATION FORM

L. GENERAL INFORMATION

a. Reevaluation Phase: Right of Way and Construction

b. Document Type & Date of Approval: EA/FONSI (May 10, 2012)

c. Project Numbers: Federal Aid: 0471-032-P, 0471-033-P, 0471-034-P  
FPID: 411102-2; 411102-3; 411102-4

d. Project Local Name, Location and Limits: SR 123 (Roger J. Clary Highway) from  
SR 85 South to north of Toms Creek; Segment 2: 411102-3, SR 123 from north of Toms  
SR 85 South to north of Toms Creek; Segment 3: 411102-4, SR 123 from north of Toms

e. Project Segment Planning Consistency?

	Currently	Previously	TIP/STIP	TIP/STIP	COMMENTS
			FY	FY	
PE (Final Design)	Y	Y	FY12-17	FY13-18	411102-2: \$11,087 for PE in FY12-17 TIP 411102-3: previously funded 411102-4: \$11,087 for PE in FY12-17 TIP
Construction	Y	Y	FY13-18	FY13-18	411102-2: \$11,087 for CST in FY13-17 TIP 411102-3: \$11,087 for CST in FY13-17 TIP 411102-4: \$11,087 for CST in FY13-17 TIP

FDOT Reviewer: Natalie Furman, FDOT District 3 Environmental Specialist

Page 1

FPID 411102-2, 411102-3, 411102-4 Right of Way and Construction Reevaluation





# REEVALUATIONS

- **FDOT D3 Reevaluation Examples:**
  - **US 331 from North Nokuse Plantation to Edgewood Circle and Owl's Head Road to Edgewood Circle**
    - **2/7/2000** - *Original Type 2 CE approved by FHWA*
    - **2002-2010** – *Multiple Reevaluations completed*
    - **6/2/2011** - *ROW and Construction Reevaluation approved by FHWA*
    - **7/2013** - *Let for Design/Build*



# REEVALUATIONS

- **FDOT D3 Reevaluation Examples:**

- **SR 10 (US 90) Perdido River Bridge Replacement (Bridge Number 480001)**

- **11/13/2007** - *Original Type 2 CE approved by FHWA*
- **2/25/2010** - *ROW and Construction Reevaluation approved by FHWA*
- **4/2013** - *Construction completed*



# REEVALUATIONS

- **Challenges in the Reevaluation Phase**
  - Changes in Design Standards
  - Changes in Regulations
  - Advanced Production
  - Projects That Have Spent Time on the Shelf
  - Plan Consistency



# REEVALUATIONS

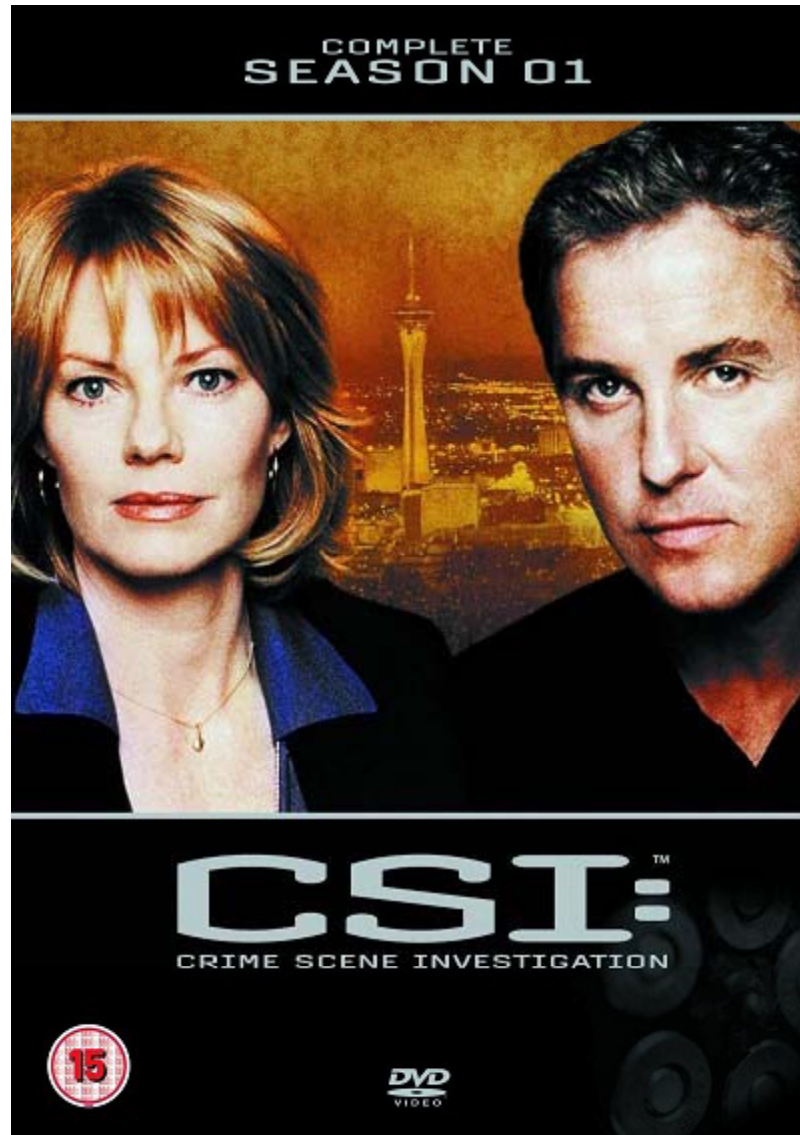




# REEVALUATIONS



# REEVALUATIONS



# REEVALUATIONS

