

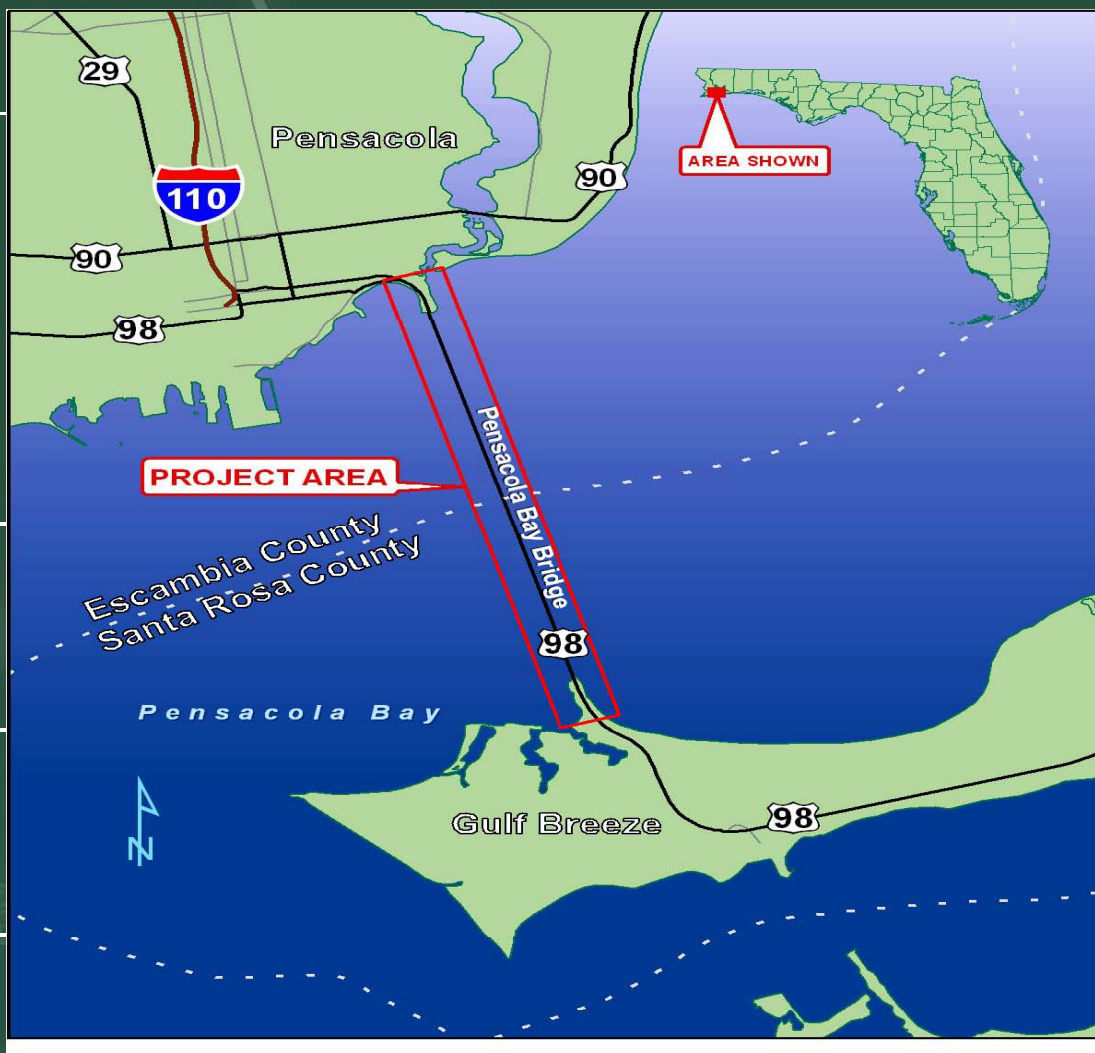
Pensacola Bay Bridge Replacement Project Development & Environment Study

*FDOT District 3 ETAT Meeting
October 25, 2012*



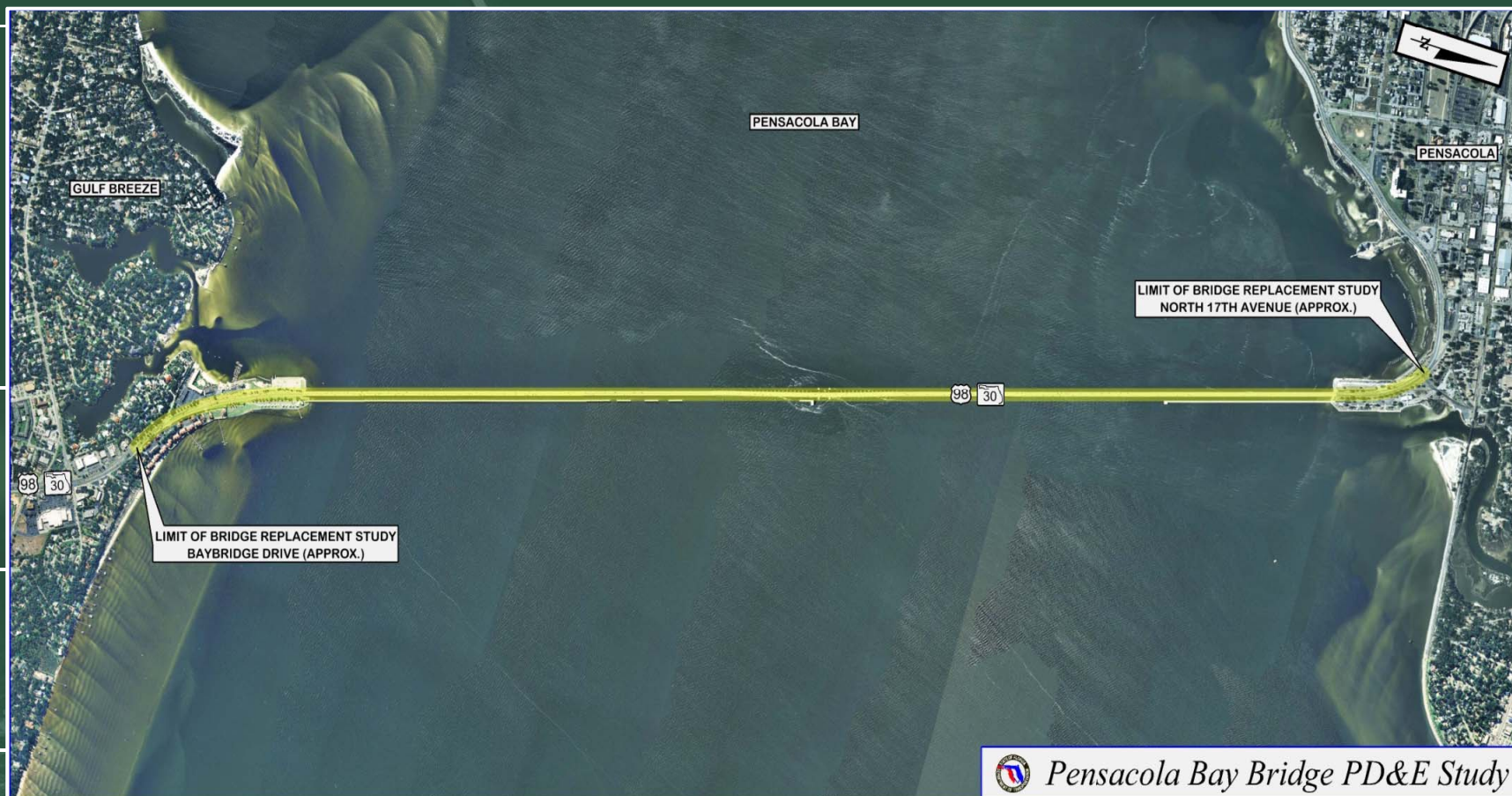


Project Location





Project Limits



Pensacola Bay Bridge PD&E Study



Purpose



- Basis for performing the replacement bridge study
 - Lack of modern safety provisions
 - No facilities for bikes and pedestrians
 - Does not meet current desirable navigation requirements
 - Deteriorating conditions indicate that the twin bridges are structurally deficient
- Study Purpose
 - Determine the best solution for replacement of the existing bridge



PD&E Task Elements



Project Development & Environment Study

- Evaluate Current Conditions – Data Collection
 - *Environmental, Social, Engineering*
- Forecast Future Needs – Traffic
- Evaluate Alternative Corridors
- **Develop Alternative Alignments**
- Perform Assessments of Potential Environmental and Community Impacts
- Select an Alternative to advance into Preliminary Engineering



Pensacola Approach

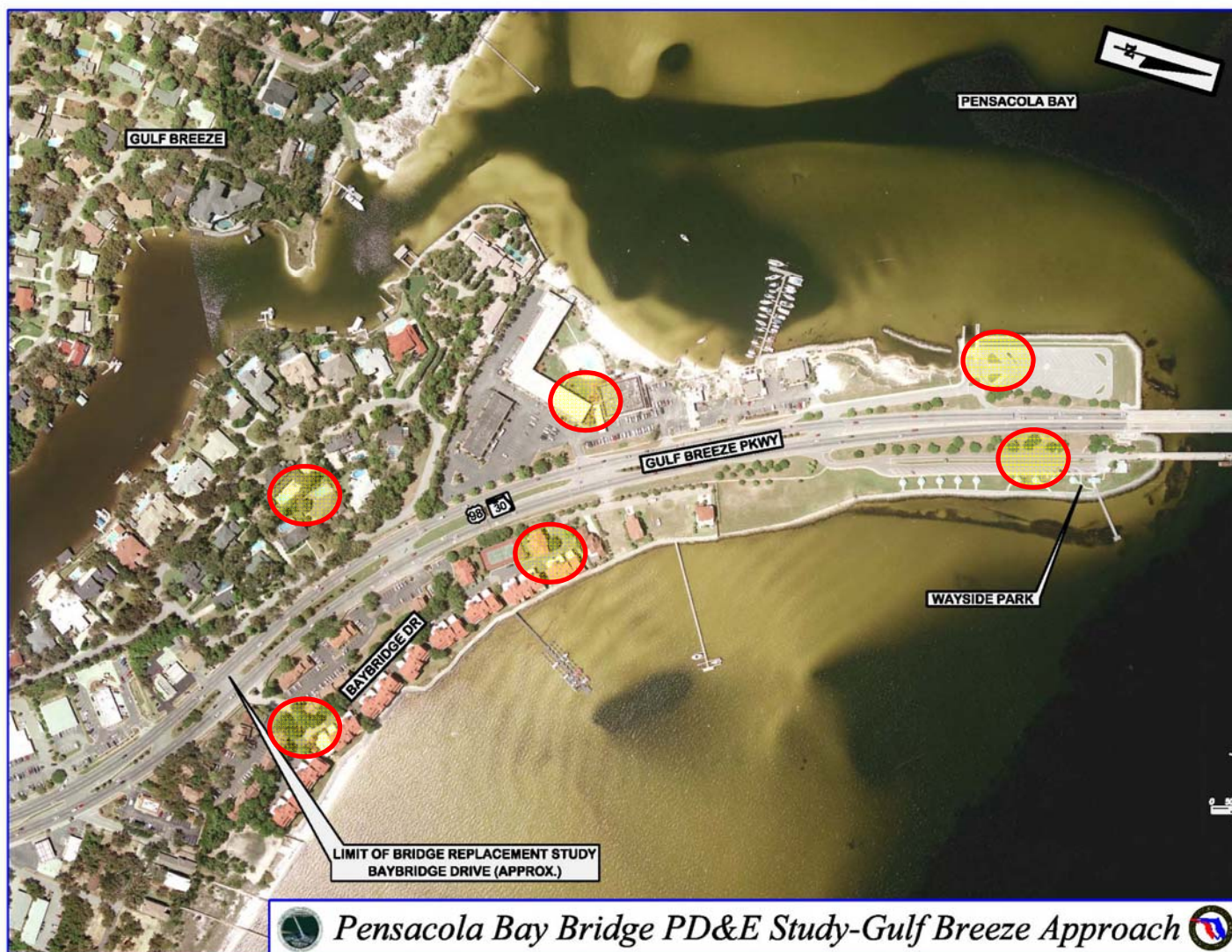


Pensacola Bay Bridge PD&E Study-Pensacola Approach





Gulf Breeze Approach



Pensacola Bay Bridge PD&E Study-Gulf Breeze Approach





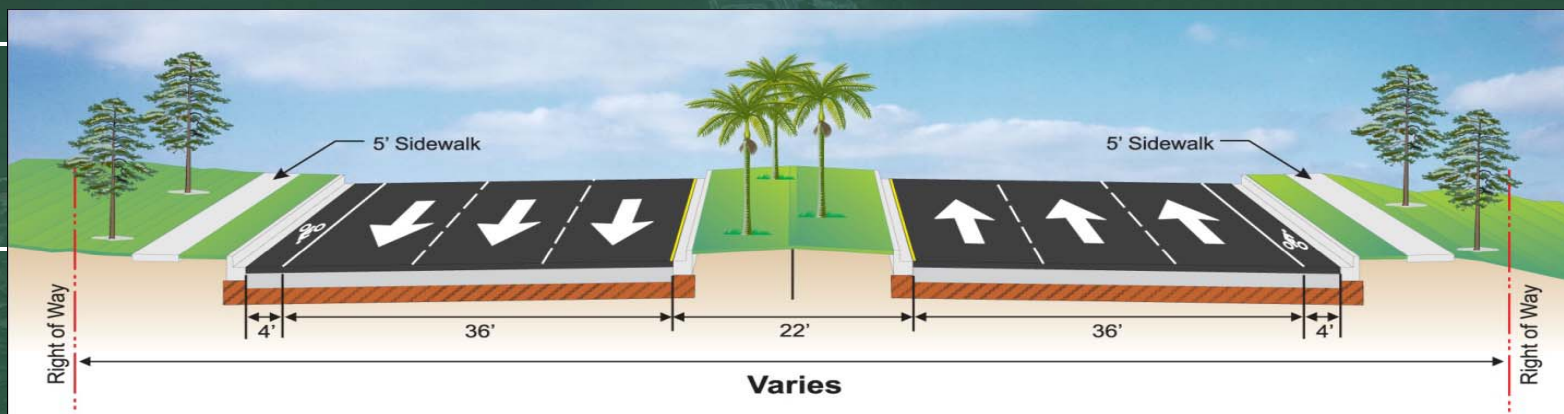
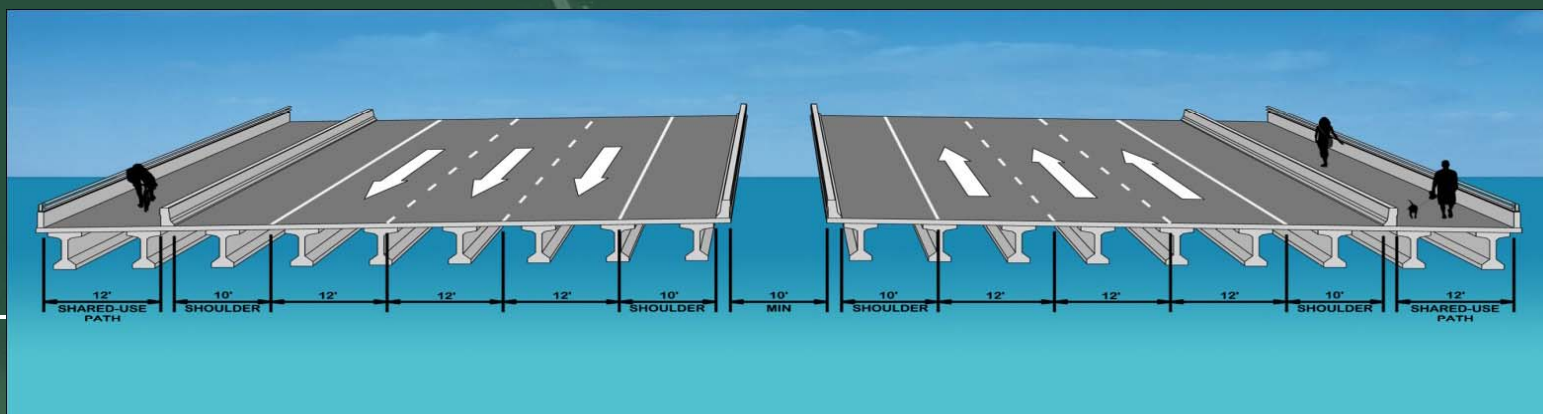
Future Traffic – 2040 AADT





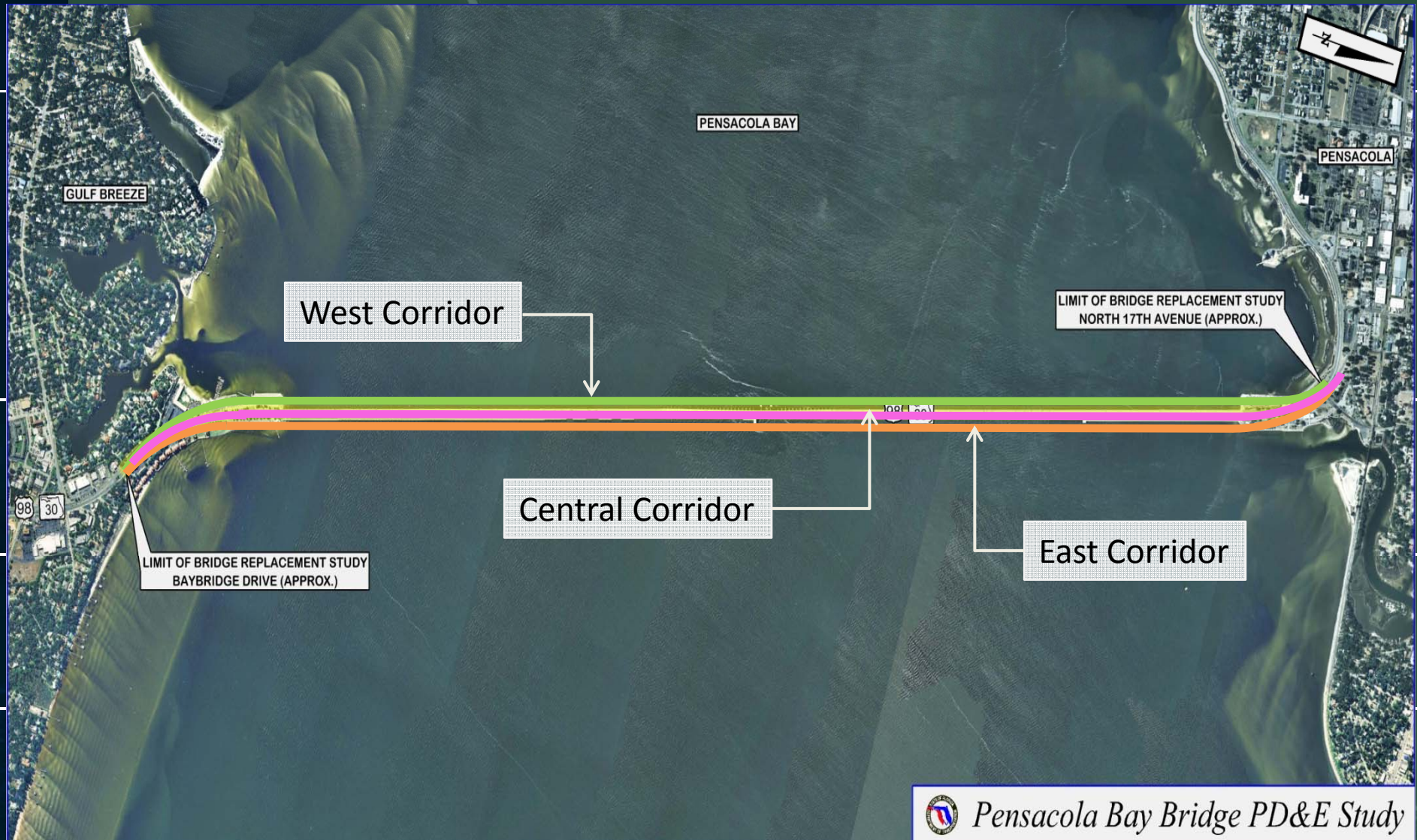
Road & Bridge Configurations

- Three lanes in each direction
- Shoulders adjacent to the travel lanes (bridge only)
- Pedestrian/bicycle path in each direction





Corridor Alternatives





Corridor Alternatives

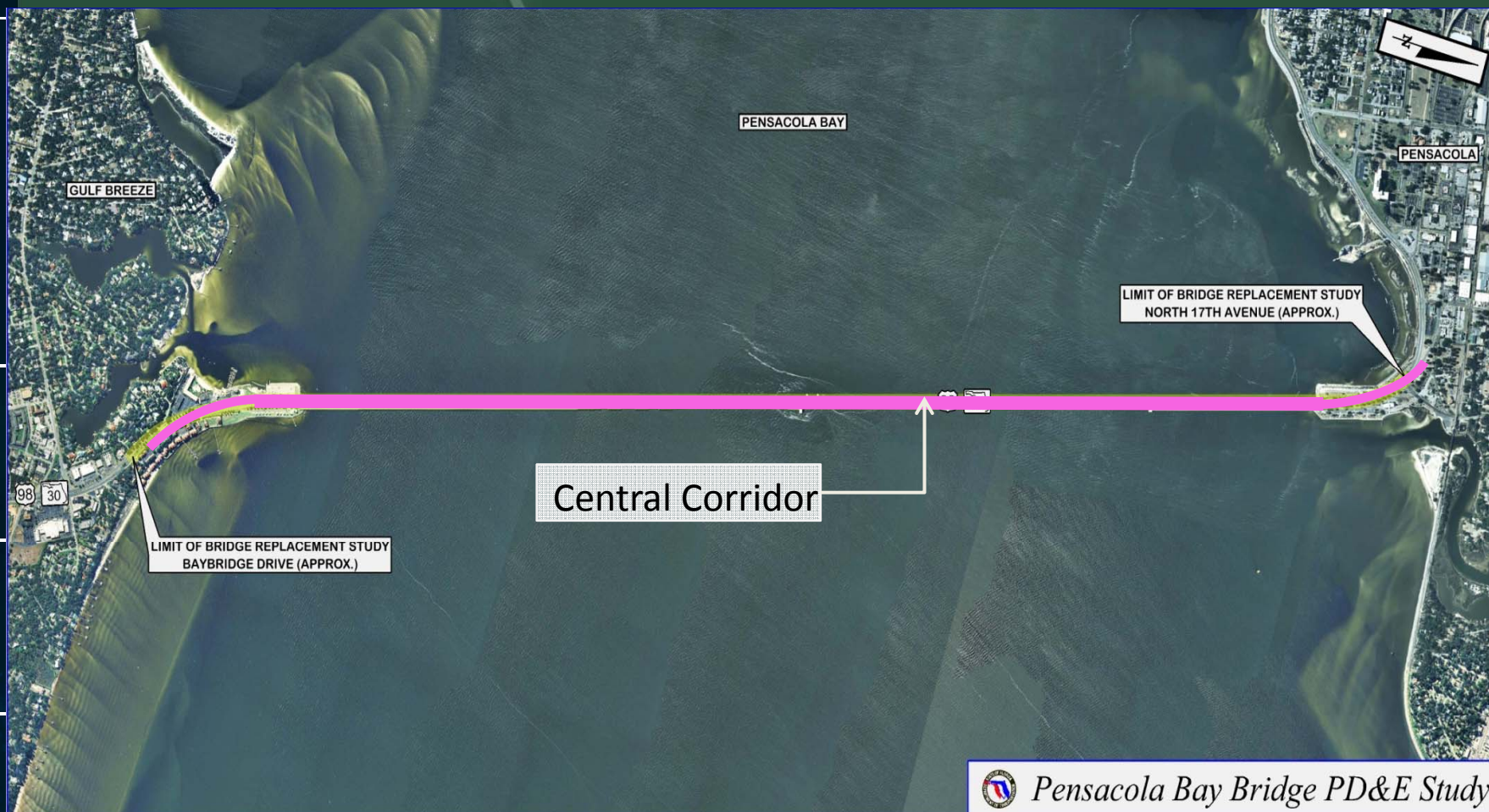


Representative Alignments





Preferred Corridor





Preferred Corridor - Central

- *Least disruptive to community facilities*
 - *Pensacola Wayside Park*
 - *Gulf Breeze Wayside Parks – East & West*
 - *Gulf Breeze Boat Launch/Emergency Services*
 - *Pensacola Welcome Center*
 - *Escambia County Fishing Bridge*
- *Least disruptive to the marine environment*
 - *Essential Fish Habitat*
 - *Endangered and Protected Species*
 - *Cultural Resources*
- *Least disruptive to residences and businesses*
- *Retains the greatest amount of shoreline*



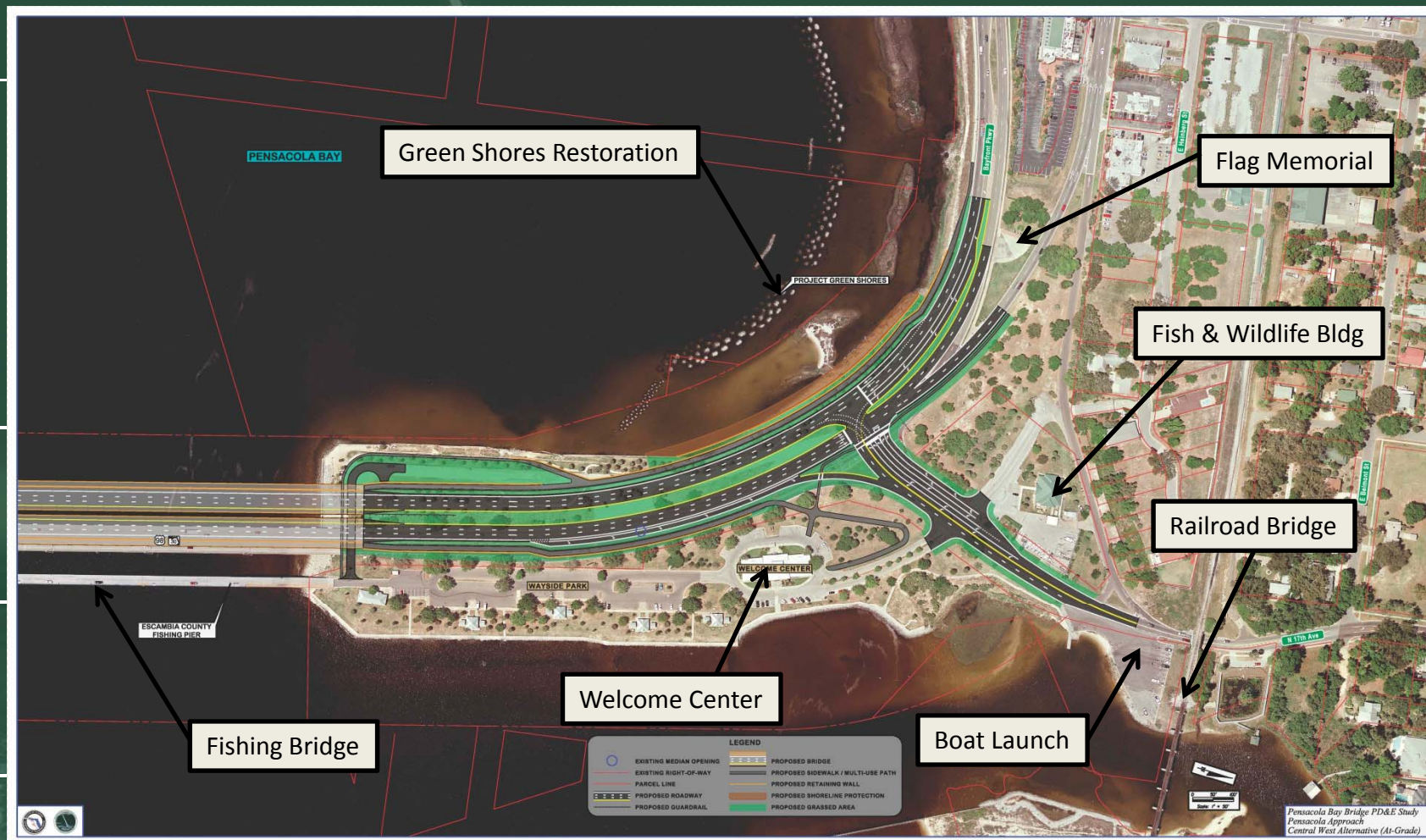
Central Corridor Design Alternatives

“Build” Alternatives

- *Central East*
- *Central West*
- *FHWA is also required to assess a “no build” condition during the PD&E study process*



17th Avenue - "At Grade Concept"



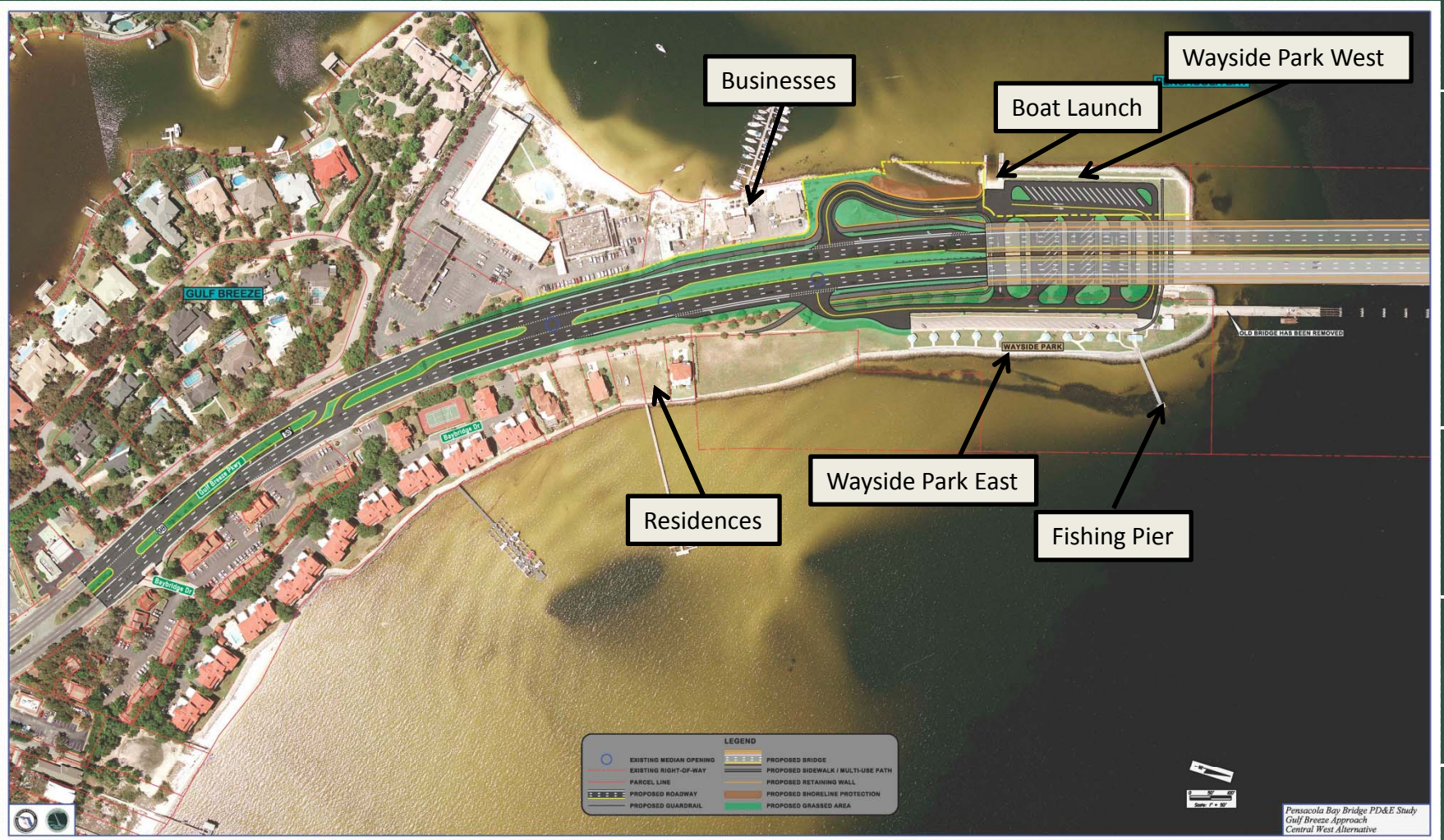


17th Avenue - "Flyover Ramp Concept"





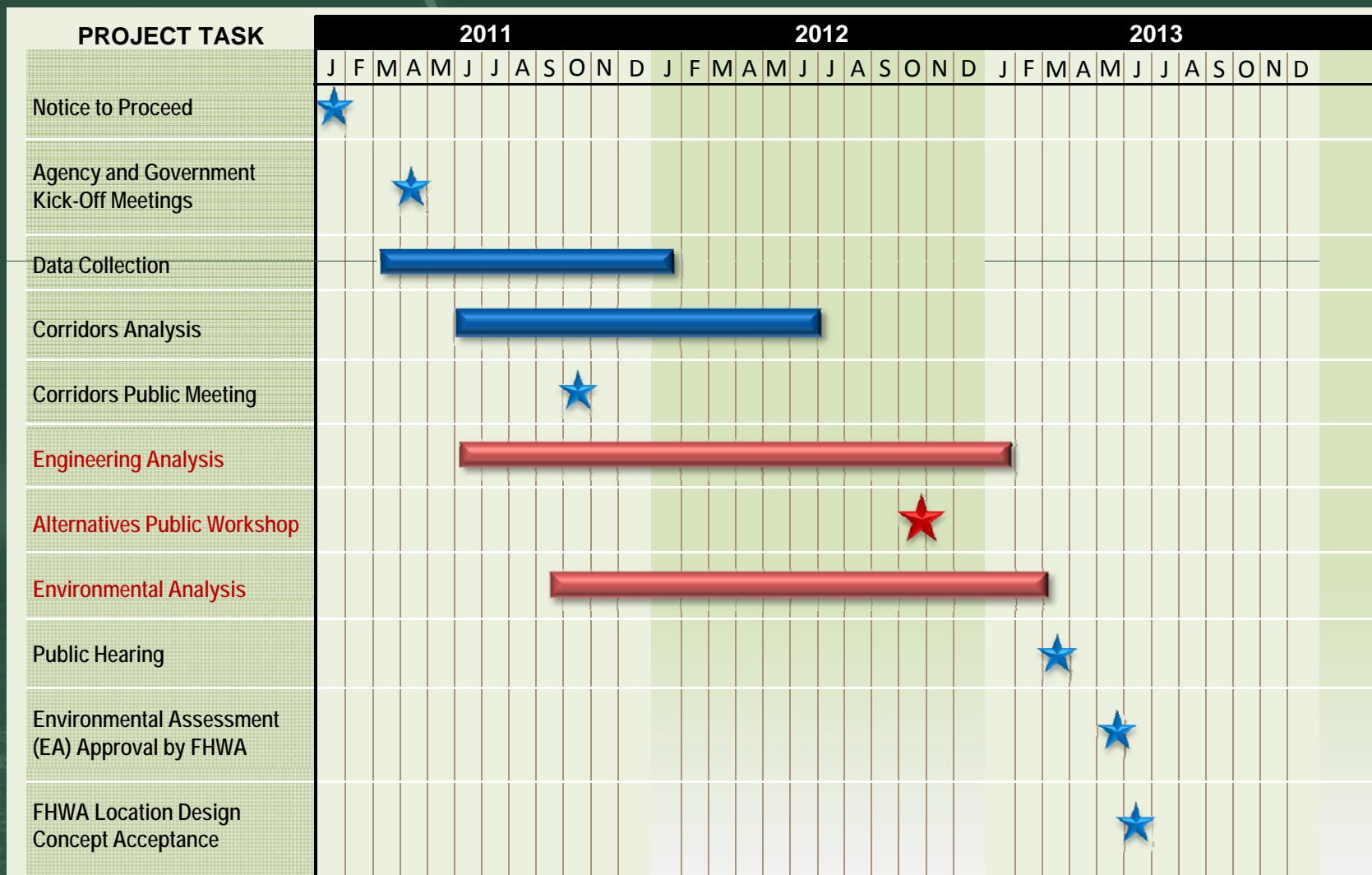
Gulf Breeze Approach – Wayside Park Area





Wayside Park Concept Plan





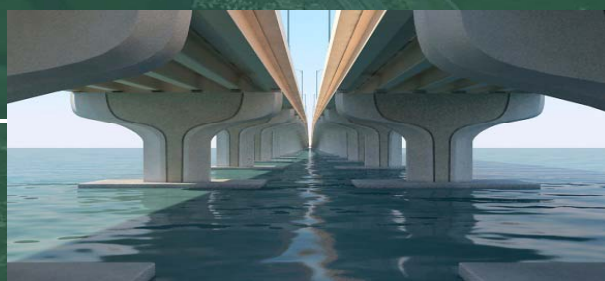


Pensacola Bay Bridge – Possible Enhancements

Gulf Breeze Approach

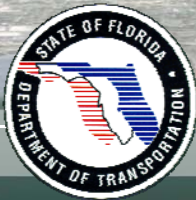


Pensacola Bay Crossing



Pensacola Approach





Thank You!

Pensacola Bay Bridge Replacement Project Development & Environment Study

***FDOT District 3 ETAT Meeting
October 25, 2012***

www.PensacolaBayBridge.com

