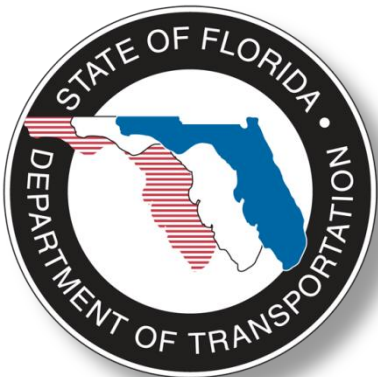


EST Enhancements



ETAT Workshop 2011



Matthew Muller
Technology Resource Manager



Where are we?

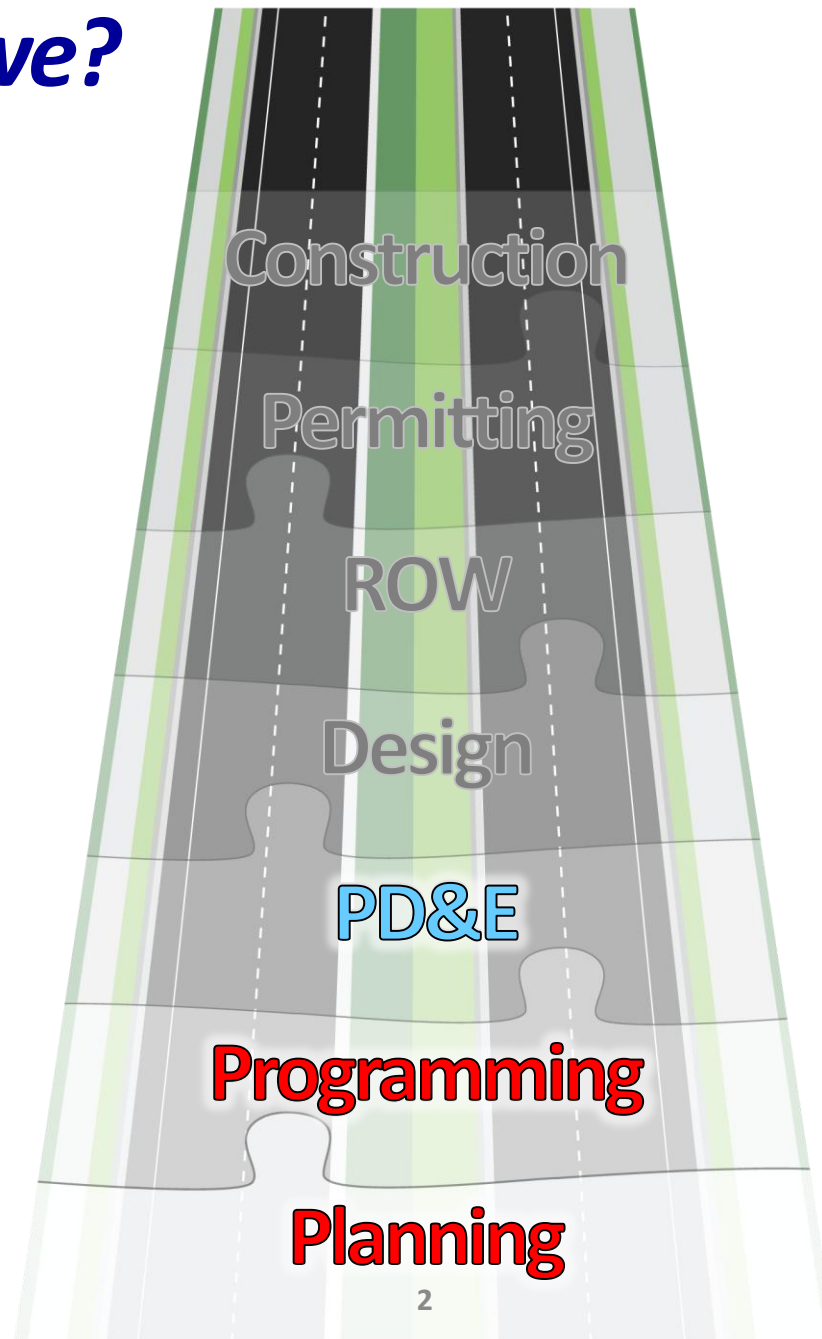


Table of Contents

- I. Recent Enhancements
- II. Upcoming Training Opportunities
- III. Future Enhancements



Efficiency through...

◆ Flexibility

- Map Search
- Coloring Alternatives

◆ Clarity

- Street Viewer
- DOI aerials
- Feature-level GIS analysis Report
- Help Tool

◆ Rapidity

- Golden Search
- Map loading

◆ Inclusivity

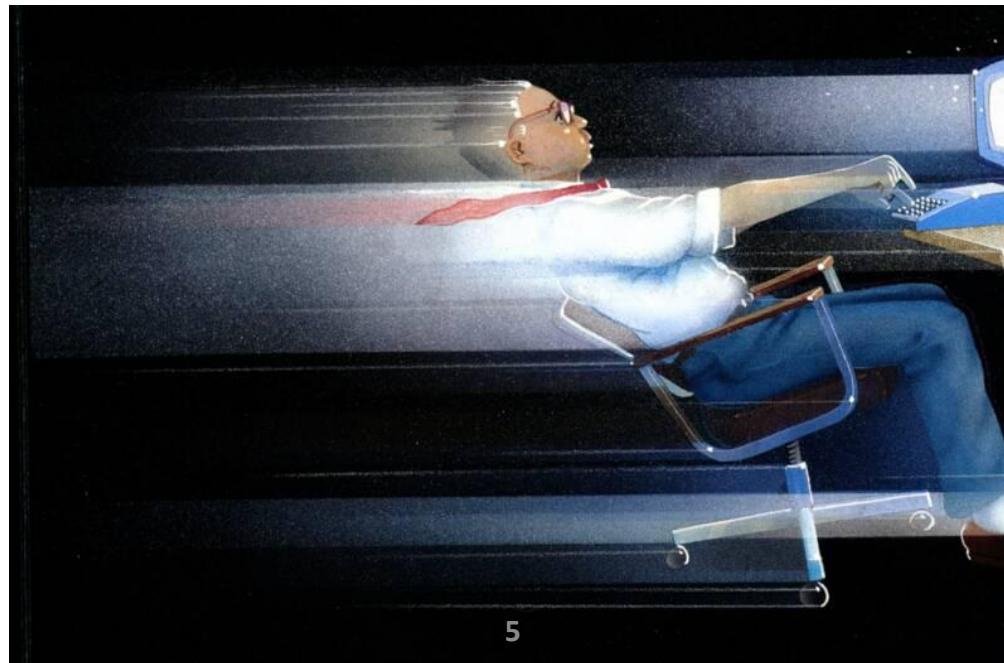
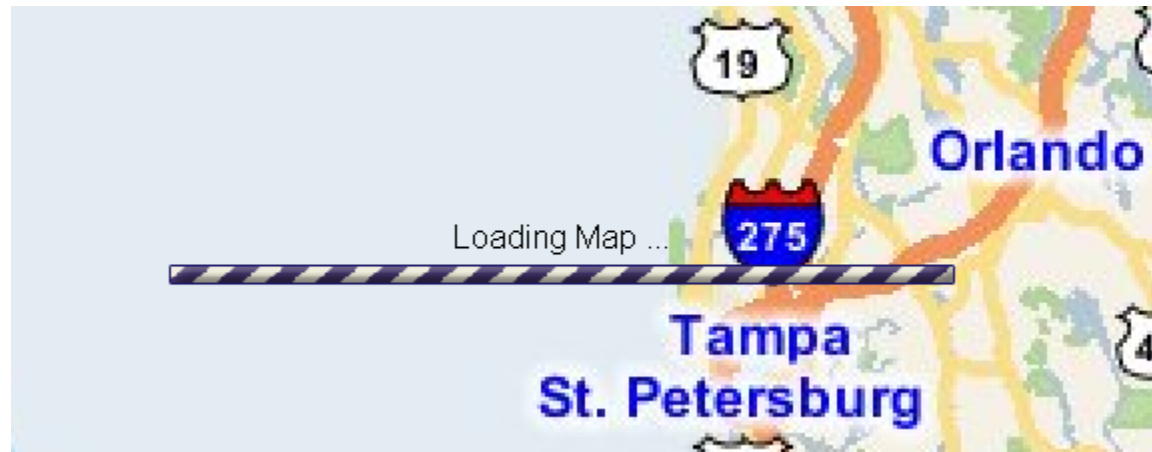
- Calendar

◆ Simplicity

- Menu Pinning
- Describe Direct Effects short form
- Map interface



Map Loading



Map Interface

Contents Tools Search Help X

Contents Tools Search Help X

Pan Zoom In Zoom Out Identify

Edit Map Features



Communities



Transportation Projects

View Ancillary Data



NRS Photos



Video Log



Project Attachments

Location and Measurement



Street View



Measure

Query



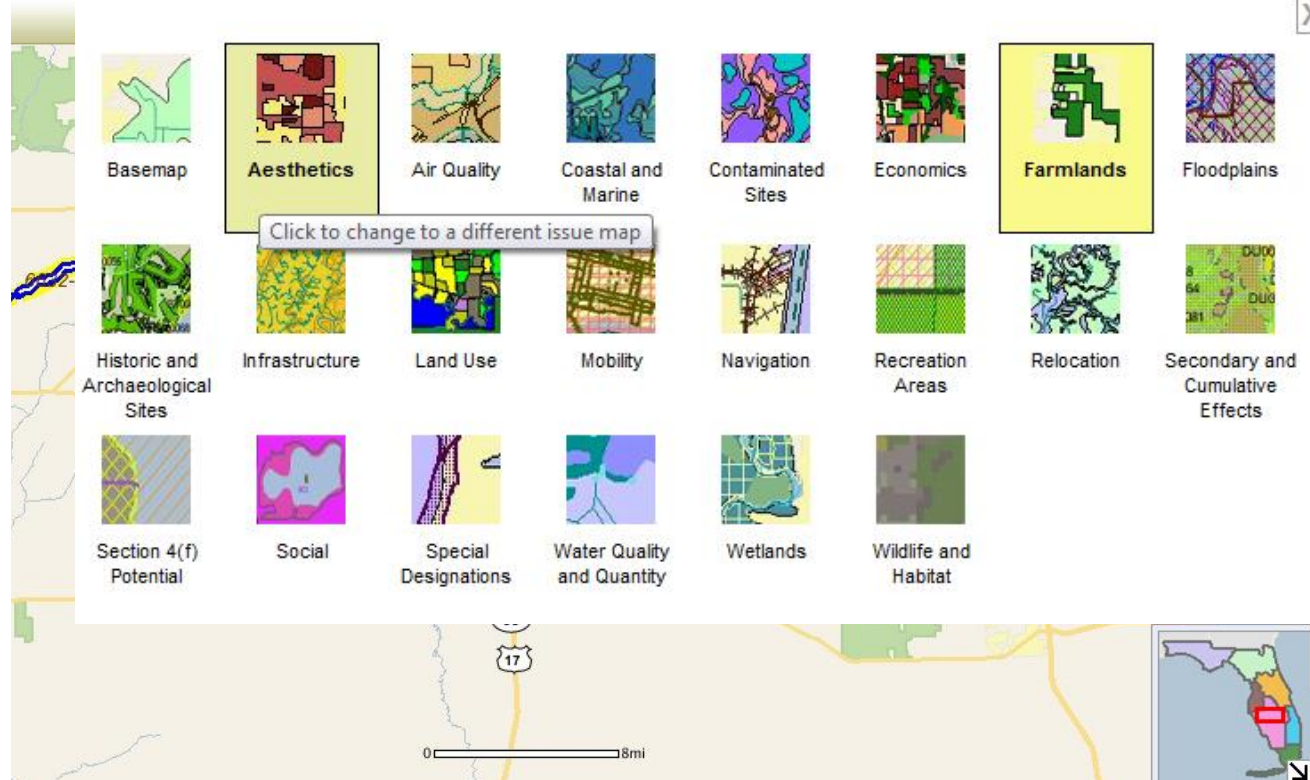
Query Database



Select From Map



Buffer



Map Search

Contents Tools Search Help X

Search

Everything ▼

Search Tips

Searches selected map layers by project, key words, or by latitude and longitude coordinates. Click a link from the results list to zoom to the location on the map.

Selecting **Everything** will search from the following layers:

- Projects
- Cities
- FDOT Districts
- Water Management Districts
- Counties
- ZIP Codes
- Street Address
- Latitude/Longitude
- Map Layers (searches for layers by name and description in the table of contents)
- Communities

Contents Tools Search Help X

river

Search

Map Layers ▼

Map Layers

1. [Major Rivers](#) ⓘ
2. [Indian River 2009 DOI](#) ⓘ
3. [Indian River County Parcels](#) ⓘ
4. [Wild and Scenic Rivers](#) ⓘ
5. [St. Johns WMD Save Our Rivers Lands](#) ⓘ
6. [South Florida WMD Save Our Rivers Lands](#) ⓘ

Search Tips

Searches selected map layers by project, key words, or by latitude and longitude coordinates. Click a link from the results list to zoom to the location on the map.

Selecting **Everything** will search from the following layers:

- Projects
- Cities
- FDOT Districts



Coloring and Displaying Alternatives

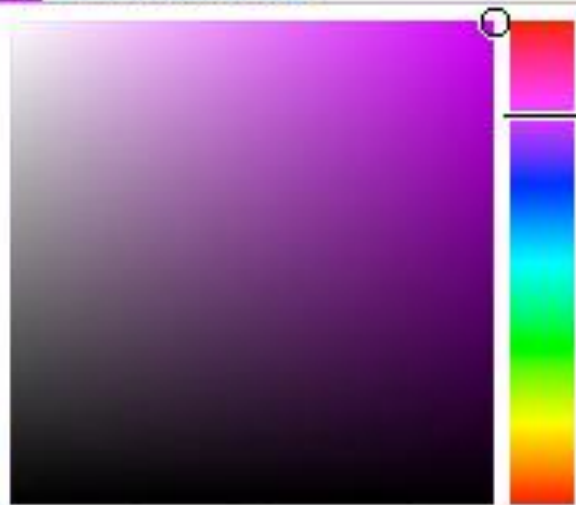
Active Project ([change](#))

 ☒ **6632-Coast to Coast**

☐  [Alternative #1](#)

☐  [Alternative #2](#)

☐  [Alternative #3](#)



1-Foot Resolution Digital Orthophoto Imagery

Contents Tools Search Help X

Maps Legend Aerials

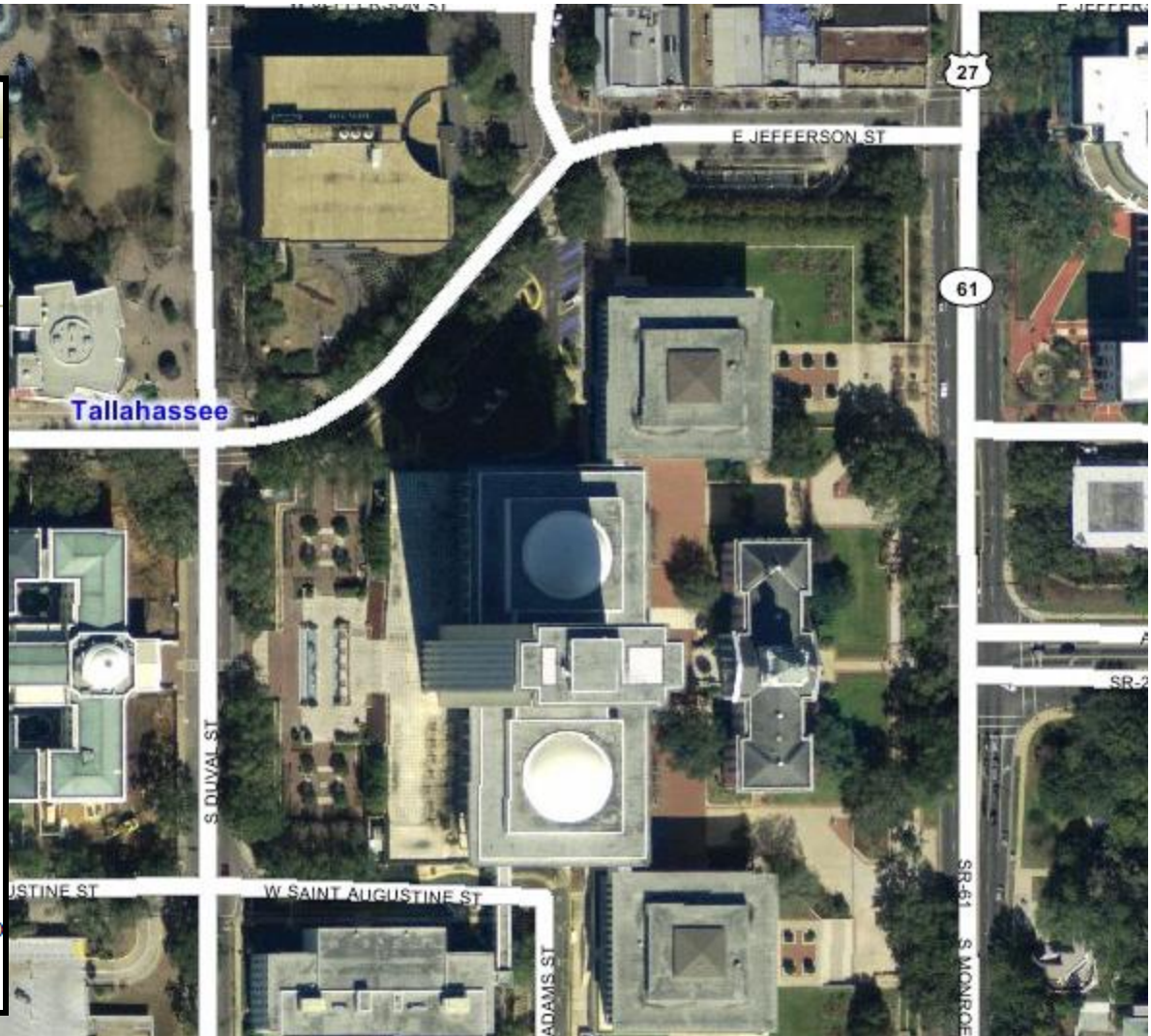
Turn on DOQQ Aerials

Turn on NAIP Aerials

Turn on DOI Aerials

Map Tips

- **Aerials** - Displays digital aerial photography layers.
 - **DOQQ** - Digital Orthophoto Quarter-Quadrangle (visible at all scales)
 - **NAIP** - National Agriculture Imagery Program (visible at all scales)
 - **DOI** - 1-Foot Resolution Digital Orthophoto Imagery (only visible at a scale of 1:5000 or higher)



Street Viewer

Zoom In Zoom Out Identify Clear Scale 1: 413526 Print

Google Maps Streetview

4984 County Road 700, Fort Meade, Florida
Address is approximate

Location and Measurement

Street View Measure

Google

© 2011 Google - Terms of Use

Click here to open Google Street View in a new window.

A screenshot of the Google Maps Street View interface. The top toolbar includes icons for Zoom In, Zoom Out, Identify, and Clear, along with a scale of 1:413526 and a Print button. The main map area shows a rural landscape with a green field, a fence, and some trees in the distance. A yellow Pegman icon is visible on the map. A Street View window is open, displaying a 360-degree panoramic view of the same landscape. The window includes a compass, a location pin, and a text box showing the address "4984 County Road 700, Fort Meade, Florida" with a note that the address is approximate. Below the panoramic view, there are two white arrows pointing left and right, and a yellow double-headed arrow indicating the current view direction. The Google logo and copyright information "© 2011 Google - Terms of Use" are visible at the bottom of the Street View window. A link to "Click here to open Google Street View in a new window." is provided at the bottom of the map area.

Menu Pinning

Reports			
Project Diary >			
Advance Notification Package >			
Project Effects >	Countywide GIS Summary	Performance Management >	Surveys
Reminders >	GIS Analysis Results	Invoicing Reports >	Issue Tracking
Agency Participation >	GIS Analysis Summary	Wizards	Performance Monitoring
Community Coordination >	Agency Comments - Project Effects	Maps	Quality Assurance Review
Performance Management >	Agency Comments - Ad Hoc Query	Account Settings	Agency Annual Reports
Invoicing Reports >	Agency Comments - Purpose & Need	Administration	Agency Feedback Report
Project Tracker >	Screening Summary Chart	FAQ	Agency Review Matrix
Document Review >	Summary Report	Tip Sheets	Agency Review Report
	Sociocultural Effects Evaluation Summary Report	User Handbook	Data Quality Assessment
	Federal Consistency Findings	ETDM Glossary	Environmental Documents Report
	Track State Clearinghouse Projects Report	ETDM Acronyms	ETAT Participation Report
	Class of Action Determination	ETDM Library	ETAT Review Status Report
	Comments on Environmental Documents	ETDM Calendar	ETDM Scorecard
	GIS Analysis Results (All)		Performance Measure Results
			SCE Evaluation Participation Report
			Summary Report Status Report

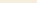


Feature Level Analysis


#13469 Central Broward East-West Transit Study

District	District 4	Phase	Planning Screen
County	Broward	From	Sawgrass Mills Mall
Planning Organization	FDOT District 4	To	Broward Blvd & FLL TriRail Sta
Plan ID		Financial Management No.	41118922202


Alternative #1 Summary

Analysis Name	Date Run	100 ft.		200 ft.		500 ft.		1320 ft.		5280 ft.		Details
		Cnt	Acr	Cnt	Acr	Cnt	Acr	Cnt	Acr	Cnt	Acr	
Aesthetics												
 Enterprise Zones	03/11/2011	0	0.0	0	0.0	0	0.0	0	0.0	0	0.0	

Feature [S-001](#) of Alternative #1 Summary

Analysis Name	Date Run	100 ft.		200 ft.		500 ft.		1320 ft.		5280 ft.		Details
		Cnt	Acr	Cnt	Acr	Cnt	Acr	Cnt	Acr	Cnt	Acr	
Aesthetics												
 Enterprise Zones	03/11/2011	0	0.0	0	0.0	0	0.0	0	0.0	0	0.0	

Feature [S-002](#) of Alternative #1 Summary

Analysis Name	Date Run	100 ft.		200 ft.		500 ft.		1320 ft.		5280 ft.		Details
		Cnt	Acr	Cnt	Acr	Cnt	Acr	Cnt	Acr	Cnt	Acr	
Aesthetics												
 Enterprise Zones	03/11/2011	0	0.0	0	0.0	0	0.0	0	0.0	0	0.0	

Show Analysis Types for Resource Issues:

- | | | |
|---|--|---|
| <input type="checkbox"/> Aesthetics | <input type="checkbox"/> Historic and Archaeological Sites | <input type="checkbox"/> Secondary and Cumulative Effects |
| <input type="checkbox"/> Air Quality | <input type="checkbox"/> Infrastructure | <input type="checkbox"/> Section 4(f) Potential |
| <input type="checkbox"/> Coastal and Marine | <input type="checkbox"/> Land Use | <input type="checkbox"/> Social |
| <input type="checkbox"/> Contaminated Sites | <input type="checkbox"/> Mobility | <input type="checkbox"/> Special Designations |
| <input type="checkbox"/> Economic | <input type="checkbox"/> Navigation | <input type="checkbox"/> Water Quality and Quantity |
| <input type="checkbox"/> Farmlands | <input type="checkbox"/> Recreation Areas | <input type="checkbox"/> Wetlands |
| <input type="checkbox"/> Floodplains | <input type="checkbox"/> Relocation | <input type="checkbox"/> Wildlife and Habitat |



Help Tool and Map Tips

GIS Analysis Report

GIS Analysis Report



GIS Analysis Report

What's Next

Click the print icon on the page toolbar to print the report.



Click the PDF icon on the page toolbar to open a PDF version of the report, which you can save on your desktop.



Step 5 – View the Report Details

The GIS Analysis Report lists the analysis results for the selected Alternative(s) and feature(s). Each section begins with an **Alternative/feature summary** followed by analysis results details.

Alternative #1 Summary												
Analysis Name	Date Run	Alt	Dist	Alt	Dist	Alt	Dist	Alt	Dist	Alt	Dist	Details
Solid Waste Facilities												
03050211	6	0.0	0	0.0	0	0.0	0	0.0	0	0.0	47	0.0
Land Use												
03050211	1	107.06	1	284.0	1	758.74	1	1760.0	1	6500.07	10000	
Feature S-001 of Alternative #1 Summary												
Analysis Name	Date Run	Alt	Dist	Alt	Dist	Alt	Dist	Alt	Dist	Alt	Dist	Details
Solid Waste Facilities												
03050211	6	0.0	0	0.0	0	0.0	0	0.0	0	0.0	0	0.0
Land Use												
03050211	6	0.0	0	0.0	0	0.0	0	0.0	0	0.0	0	0.0
Feature S-002 of Alternative #1 Summary												
Analysis Name	Date Run	Alt	Dist	Alt	Dist	Alt	Dist	Alt	Dist	Alt	Dist	Details
Solid Waste Facilities												
03050211	6	0.0	0	0.0	0	0.0	0	0.0	0	0.0	0	0.0
Land Use												
03050211	6	0.0	0	0.0	0	0.0	0	0.0	0	0.0	0	0.0
Feature S-003 of Alternative #1 Summary												
Analysis Name	Date Run	Alt	Dist	Alt	Dist	Alt	Dist	Alt	Dist	Alt	Dist	Details
Solid Waste Facilities												
03050211	6	0.0	0	0.0	0	0.0	0	0.0	0	0.0	0	0.0
Land Use												
03050211	6	0.0	0	0.0	0	0.0	0	0.0	0	0.0	0	0.0
Feature S-004 of Alternative #1 Summary												
Analysis Name	Date Run	Alt	Dist	Alt	Dist	Alt	Dist	Alt	Dist	Alt	Dist	Details
Solid Waste Facilities												
03050211	6	0.0	0	0.0	0	0.0	0	0.0	0	0.0	0	0.0
Land Use												
03050211	6	0.0	0	0.0	0	0.0	0	0.0	0	0.0	0	0.0

Click details to scroll to the analysis results details section.

Click metadata to view the metadata screen.

Click summary to scroll back to the Alternative/feature Summary section.

ETDM Help Desk
(850)414-5334
help@fla-etat.org

Functions > Reports > Project Effects

GIS Analysis Report

The **GIS Analysis Report** function enables users to view analysis results for Alternatives and individual features by selecting issues, analysis types, and buffer distances to be included in the report. Users have the option to select analysis results for an entire Alternative or for individual features of the Alternative.

Using the GIS Analysis Report Function:

1. Select a project from the **Project Navigation Bar**.
2. Go to the **Reports** menu, point to **Project Effects**, and then click **GIS Analysis Results**.

Reports

Project Diary >

Advance Notification Package >

Project Effects >

Countywide GIS Summary

GIS Analysis Results

The **GIS Analysis Report** page opens, displaying a form for specifying the analysis results to be included in the report.

GIS Analysis Report

GIS Analysis Report

District: District 1
 County: Collier
 Planning Organization: FDOT District 1
 Plan ID:
 Federal Investment:
 Contact Information:
 Project Web Site:
 Project Milestone:
 Current Project Date:
 Use one of the dash links below to view other historical snapshots of the data.


Use one of My GIS Reports (Optional)
 Name Selected:

Show Results for Entire Alternative
☒ Select All Alternatives
☒ Alternative #1
☒ Alternative #2
☒ Alternative #3

Show Results for Individual Features
☒ Select All Features
☐ Select All Features of Alternative #1
☐ Select All Features of Alternative #2
☐ S-001 ☐ S-002 ☐ S-003 ☐ S-004
☐ Select All Features of Alternative #3
☐ S-001 ☐ S-002



Golden Search box

**Environmental Screening Tool**

My ETDM | Bookmarks | Logout

st-West Transit Study

Advanced Project Search


Saved Searches:

Project History:

GIS Analysis Report

Search Results

Search Results



Tools and Reports

Results 1 - 5 of 21 for **direct effects** (0.01 seconds)

1. [Tools > Review Project > > Direct Effects](#) The Describe Direct Effects form allows Environmental Technical Advisory Team (ETAT) representatives to enter comments about potential direct effects of a project on area resources and to designate a degree of effect.
2. [Reports > Project Effects > > Agency Comments - Project Effects](#) The Agency Comments - Project Effects report gives an overview of Environmental Technical Advisory Team (ETAT) reviews of project effects with links to individual comments.
3. [Reports > Project Effects > > Sociocultural Effects Evaluation Summary Report](#) The Sociocultural Effects Evaluation (SCE) Summary Report enables Environmental Management Office managers to review the potential sociocultural effects a project may have on a community. A subset of the Screening Summary Report, the SCE Summary Report displays an overview along with detailed comments made by Environmental Technical Advisory Team members regarding the Community category of resource issues (sociocultural issues). Sociocultural issues comprise the following resources: Aesthetics, Economic, Land Use, Mobility, Relocation, and Social.
4. [Reports > Project Effects > > Countywide GIS Summary](#) The Countywide GIS Summary report summarizes the results of the GIS analyses for the projects within the selected county. This report is useful for assessing cumulative effects.
5. [Reports > Project Effects > > Track State Clearinghouse Projects Report](#) Report of tracking information for State Clearinghouse Projects.

Go to page: [1](#) [2](#) [3](#) [4](#) [5](#)

[Browse all tools and reports in the EST Site Map](#)


Library Documents


Communities

Projects

Contacts

Click to Open Map





Describe Direct Effects Short Form

Describe Direct Effects



#7579 Miami Streetcar			
District	District 6	Phase	Programming Screen
County	Miami-Dade	From	NE 41st Street
Planning Organization	FDOT District 6	To	SE/SW 1st Street
Plan ID	B-71215	Financial Management No.	
Federal Involvement	No federal involvement has been identified.		
Contact Information	Name: Stephanie Clemons E-mail: stephanie_clemons@urscorp.com		

Your comments have been successfully submitted. Please review the confirmation below to ensure that your review displays correctly. Once you have reviewed your comments, you may select from one of the following options:

- [Make Additional Changes](#)
- Review your comments (and other agencies' comments) using the [Agency Comments - Project Effects](#) report.
- Jump to the [Projects Needing Review](#) report.

Review Confirmation	
Total Reviews Submitted:	6
Alternatives:	1, 2
Issues:	Floodplains, Water Quality and Quantity, Wetlands
Degree(s) of Effect:	None
Coordination Document:	-No Selection-
Confidentiality Indicator:	Your comments are PUBLIC and will be printed in the Screening Summary Report and made available to everyone on the ETDM Public Access website.
Resources and Level of Importance:	This project is occurring within an existing right of way in a completely urbanized area. No resources related to floodplains, water quality and quantity, or wetlands have been identified
Comment on Effects to Resources:	Due to the project's location neither of the alternatives impact floodplains, water quality and quantity, or wetlands.
Additional Comments (Optional):	
CLC Commitments and Recommendations:	N/A
Dispute Type:	N/A
Dispute Justification:	N/A
Dispute Citation:	N/A
Dispute Recommended Actions:	N/A



Calendar

Event List

Display

- ☐ Show **only** Events in my regions.
- ☒  ETAT Review Start (Actual)
- ☒  ETAT Review End (Actual)
- ☒  ETAT Review Start (Anticipated)
- ☒  ETAT Review End (Anticipated)
- ☒  Summary Report Due
- ☒  Summary Report Published
- ☒  Summary Report Re-published
- ☒  Project Development and Environment
- ☒  Meeting
- ☒  Training



Add New ETDM Event

**** Indicates a required field**

Name**

Organization**

Advisory Council on Historic Preservation
Bay County TPO
BluePrint 2000
Broward MPO
Capital Region TPA
Charlotte County-Punta Gorda MPO

Description**

Start Date**

09/02/2011



Time:

12



:

00



AM

End Date

09/02/2011



Time:

12



:

00



AM

For all-day events, set start time and end time to 0:00 AM

Location**

Contact Information

URL

3	4	5	6	7	8
					

10



Event Name: [13288 Summary Report Due](#)

Date: 10/03/2011

Event Type: Summary Report Due

17

Event Description: Project #13288: SR 948/NW 36th Street Bridge
(Programming Screen) Summary Report Due

[close](#)



Future Training Opportunities

◆ Role-based

- Invoice Submitters
- Lead Agencies
- Project Input
- Project Managers
- Community Liaison Coordinators
- Project Management : Planning vs. Programming Screen
- ETAT Review: Planning vs. Programming Screen

◆ Maps and Tools

- Map Viewer Introduction
- Map Viewer Advanced
- Query Builder Advanced
- Calendar

◆ General

- ETDM Introduction
- EST Introduction

◆ Specific Topics

- Cumulative Effects
- Performance Management



Future Enhancements

- ◆ Cooperating/Participating Agency Invitations
- ◆ Alternative Corridor Analysis
- ◆ Noise Issue
- ◆ Public Site and EST Simplification
- ◆ Advanced Notifications
- ◆ Community Characteristics Inventory Report



Questions?

Peter McGilvray

peter.mcgilvray@dot.state.fl.us
850-414-5330

Matthew Muller

matthew.muller@dot.state.fl.us
850-414-5329

ETDM Help Desk

help@fla-etat.org
850-414-5334

